

圖 6-16 B4F 平面圖(S:1/300)

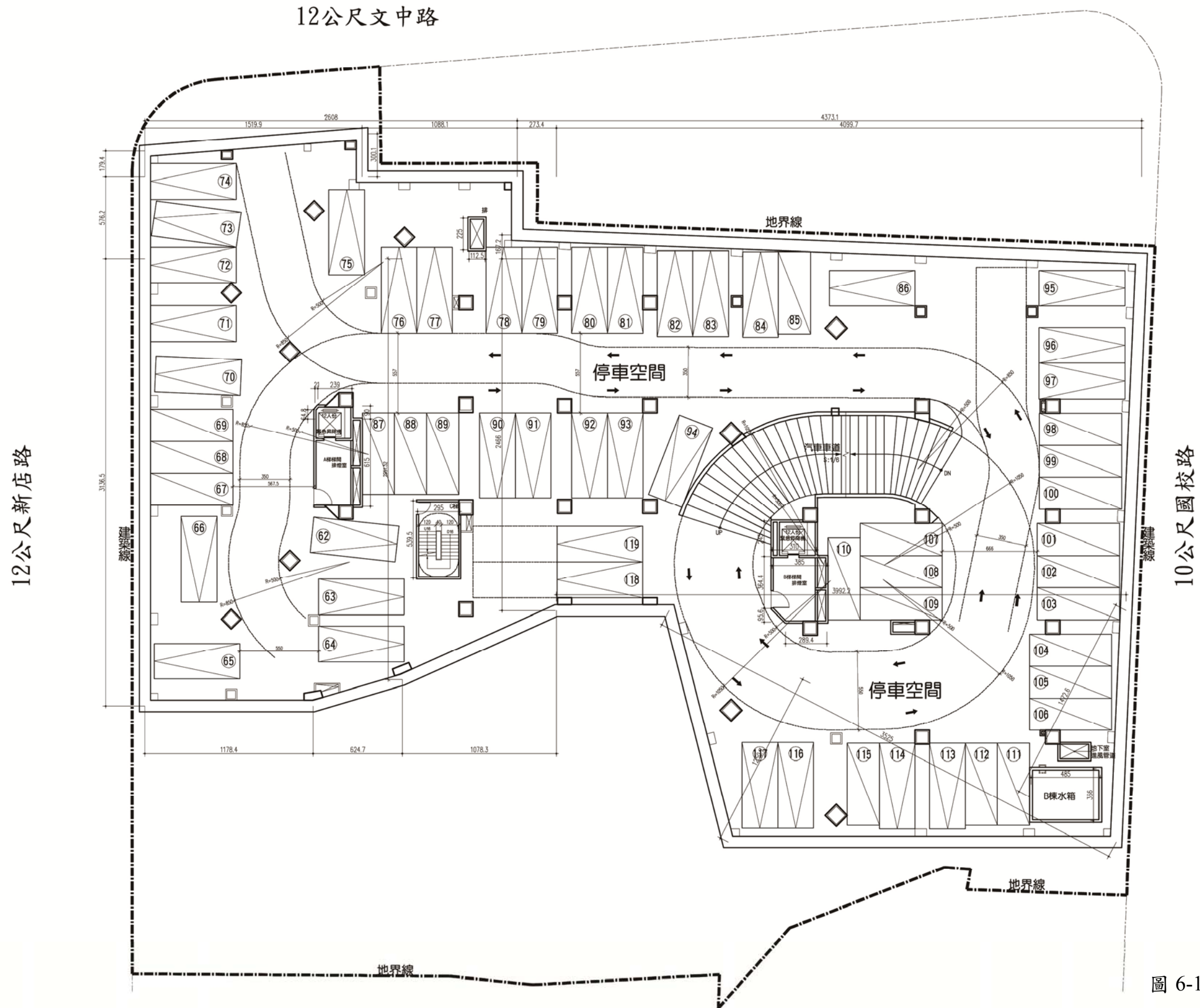


圖 6-17 B3F 平面圖(S:1/300)

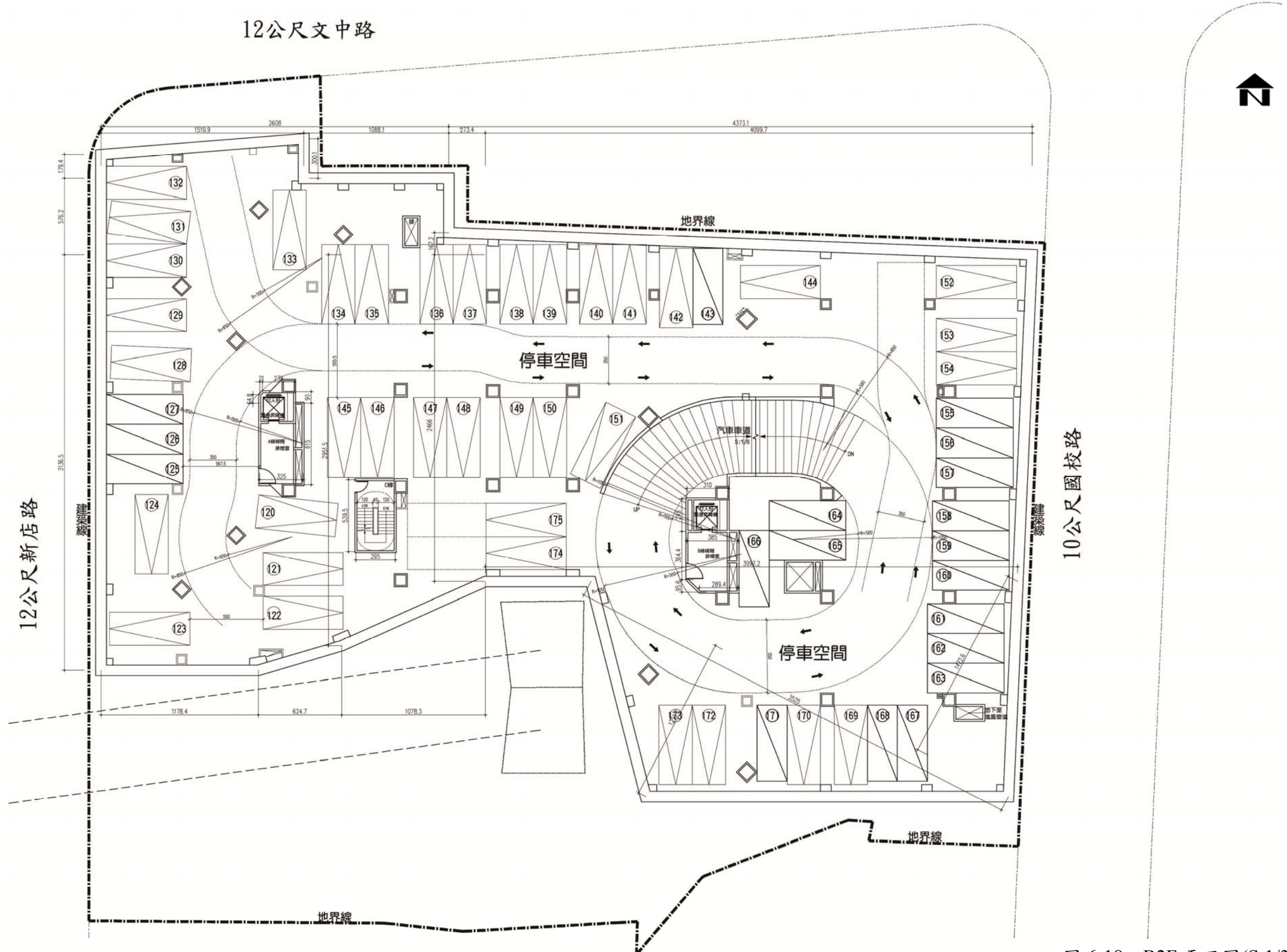


圖 6-18 B2F 平面圖(S:1/300)

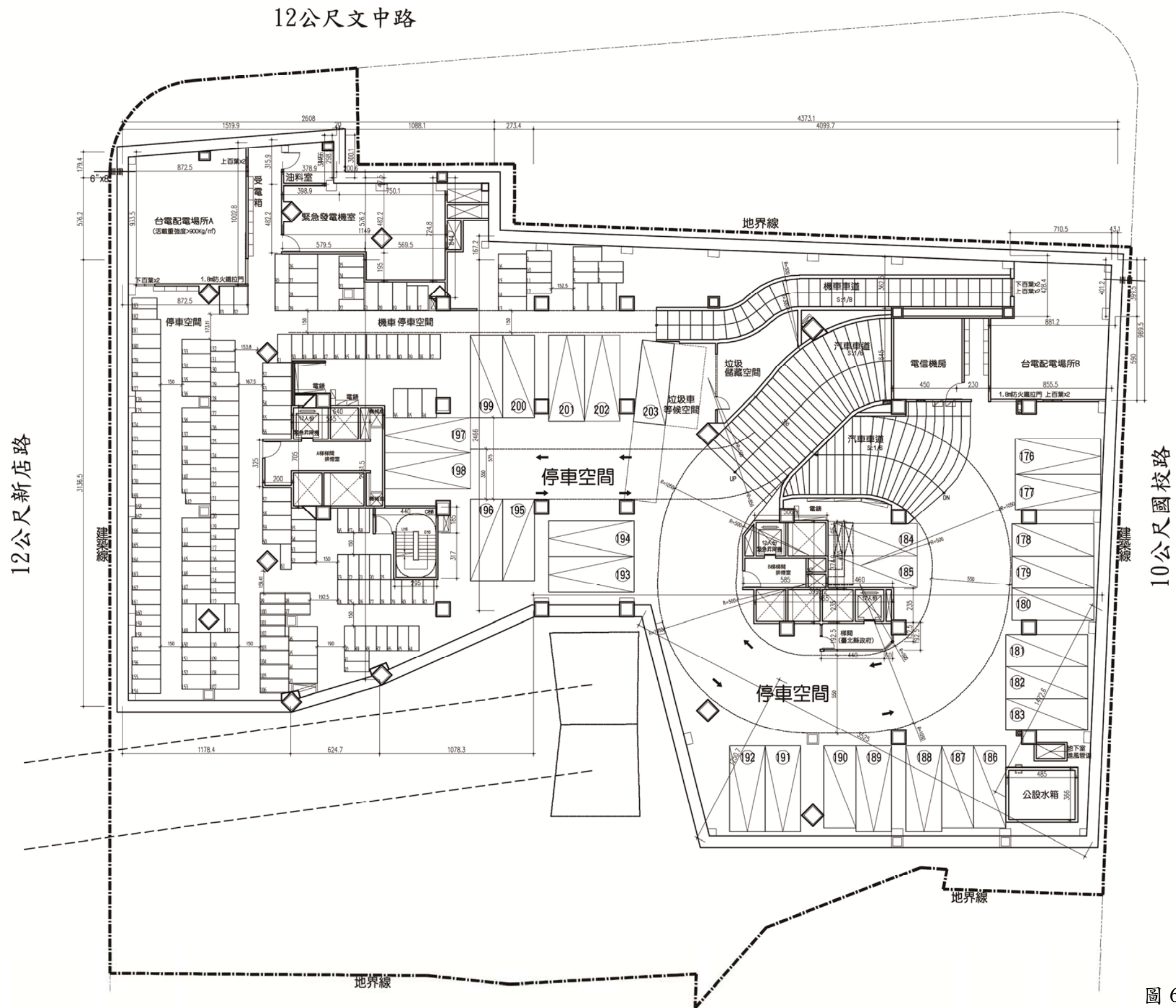
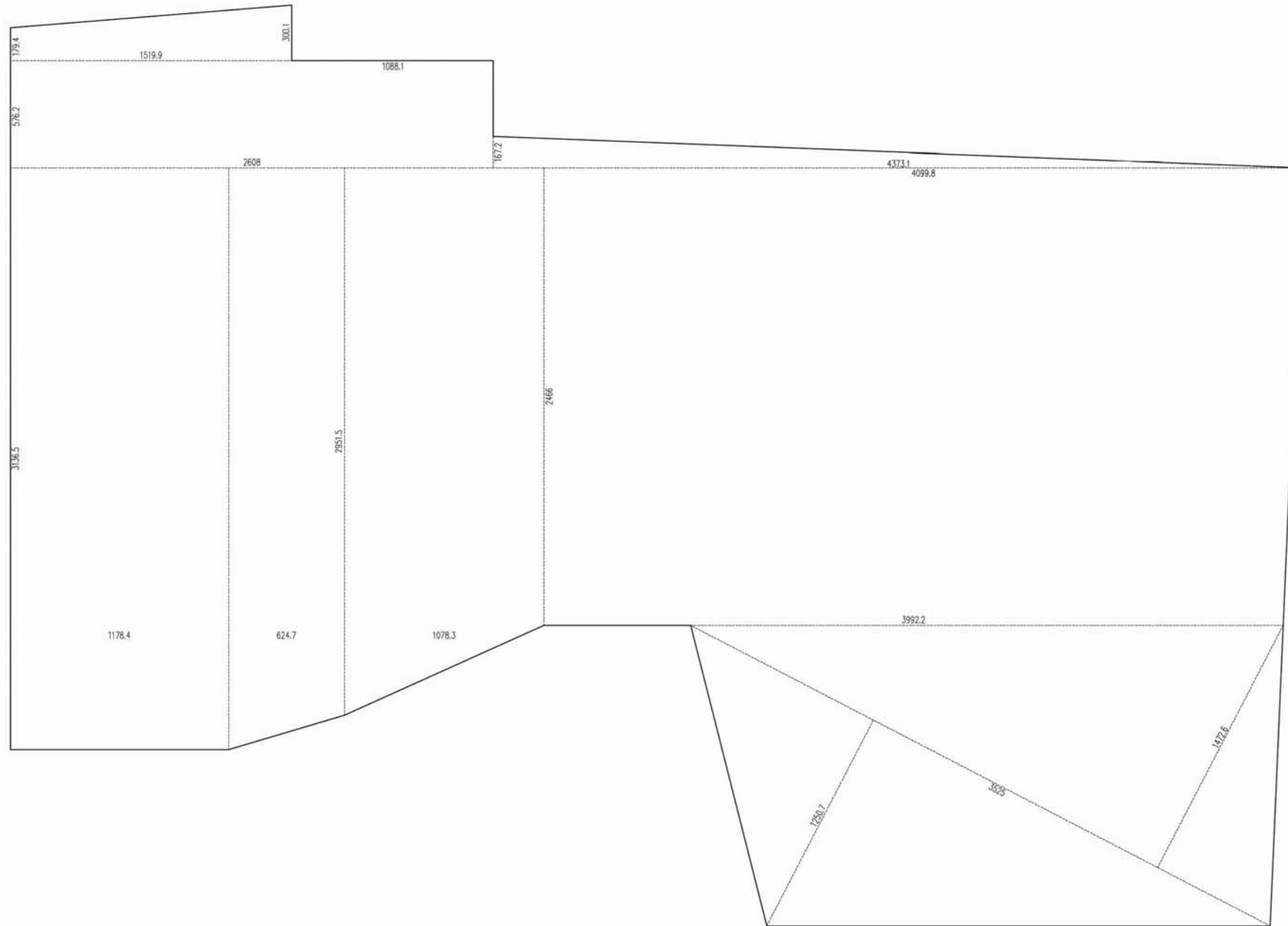


圖 6-19 B1F 平面圖(S:1/300)

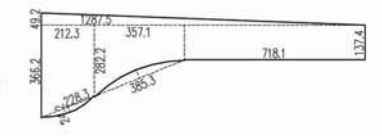


一. 地下壹層 樓地板面積計算

15.199\*(1.794+3.001)/2+26.08\*5.762  
 +43.731\*1.672/2+11.784\*31.365  
 +(31.365+29.515)\*6.247/2  
 +(29.515+24.66)\*10.783/2  
 +(39.922+40.998)\*24.66/2  
 +(12.507+14.726)\*35.25/2=2552.85m<sup>2</sup>

二. 地下壹層 固定設備面積檢討

台電配電場所A (9.335+10.028)\*8.725/2=84.47m<sup>2</sup>  
 台電配電場所B (4.284+4.012)\*7.105/2+8.555\*5.9+0.431\*9.895/2=82.08m<sup>2</sup>  
 油料室 (3.159+3.46)\*3.789/2+0.2\*(2.985+3.001)/2=13.14m<sup>2</sup>  
 緊急發電機室 2.006\*0.475+5.795\*4.822+5.695\*7.248=70.17m<sup>2</sup>  
 電信室 4.5\*6.45=29.03m<sup>2</sup>  
 機房一 (2.37+2.206)\*4.279/2=9.79m<sup>2</sup>  
 機房二 12.875\*0.492/2+(3.662+2.822)\*2.123/2+(2.822+1.374)\*3.571/2  
 +7.181\*1.374+2.283\*0.242\*2/3-3.853\*0.376\*2/3=26.81m<sup>2</sup>



機房三 7.625\*(3.625+3.333)/2=26.53m<sup>2</sup>

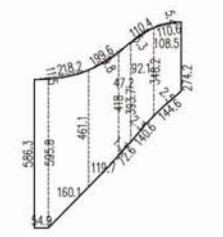
A梯 2\*3.25+6.4\*7.05=51.62m<sup>2</sup>

B梯 (5.089+5.85)\*0.951/2+5.85\*3.749+9.65\*2.35+4.4\*1.925  
 +(1.925+1.325)\*0.6/2=59.26m<sup>2</sup>

C梯 4.4\*1.85+2.95\*3.17=17.49m<sup>2</sup>

公設水箱 4.85\*3.66=17.75m<sup>2</sup>

垃圾儲藏空間 (5.958+5.863)\*0.549/2+(5.958+4.611)\*1.601/2  
 +(4.611+4.18)\*1.197/2+(4.18+3.937)\*0.472/2  
 +(3.937+3.482)\*0.921/2+(3.482+2.742)\*1.085/2  
 -2.182\*0.115\*2/3-1.996\*0.098\*2/3  
 +1.104\*0.053\*2/3+1.106\*0.054\*2/3  
 -1.446\*0.025\*2/3-1.406\*0.023\*2/3  
 +0.726\*0.013\*2/3=25.42m<sup>2</sup>



合計 513.56m<sup>2</sup> < 2552.85/4=638.21m<sup>2</sup>

三. 地下壹層 停車數量檢討

平面停車 250x600 12輛

平面停車 225x575 16輛

自設停車 28輛 編號 176~203 合計=28輛

樓層	數量	250*600 平面停車	225*575 平面停車	小計	100*200 大機車	75*175 小機車	小計
地下四層	33	28	61				
地下三層	35	23	58				
地下二層	37	19	56				
地下一層	12	16	28	92	91	183	
小計	113	90	203	92	91	183	

四. 地下層 容積面積檢討

防空避難室面積 2538.6m<sup>2</sup>  
 停車面積 40\*203=8120m<sup>2</sup>  
 地下層樓地板面積 2552.85\*4=10211.4m<sup>2</sup>  
 地下層免計容積面積 2538.6+8120=10658.6m<sup>2</sup>

10658.6m<sup>2</sup> > 10211.4m<sup>2</sup> OK

圖 6-20 B1F 面積計算圖(S:1/300)

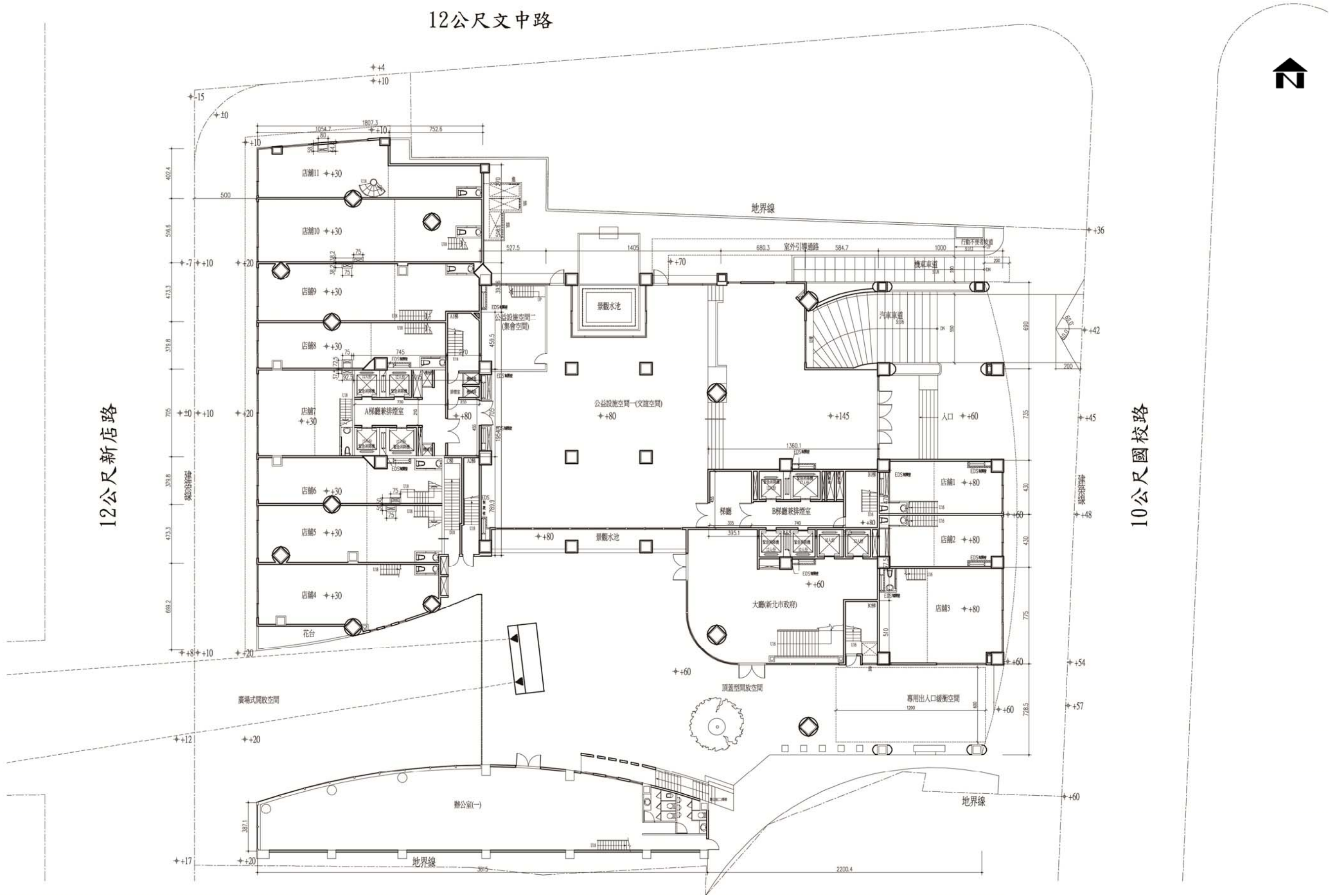


圖 6-21 1F 平面配置圖(S:1/300)

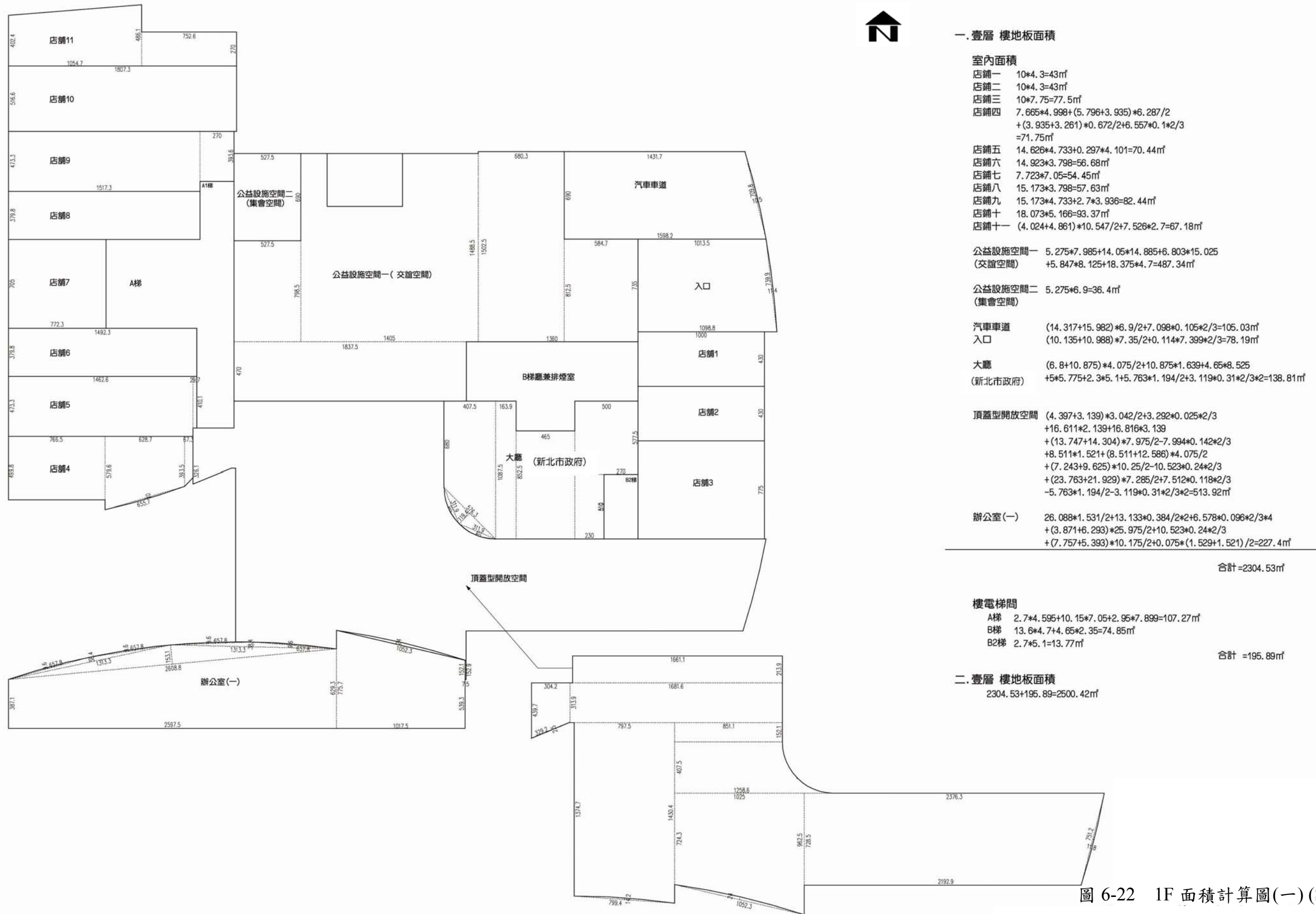
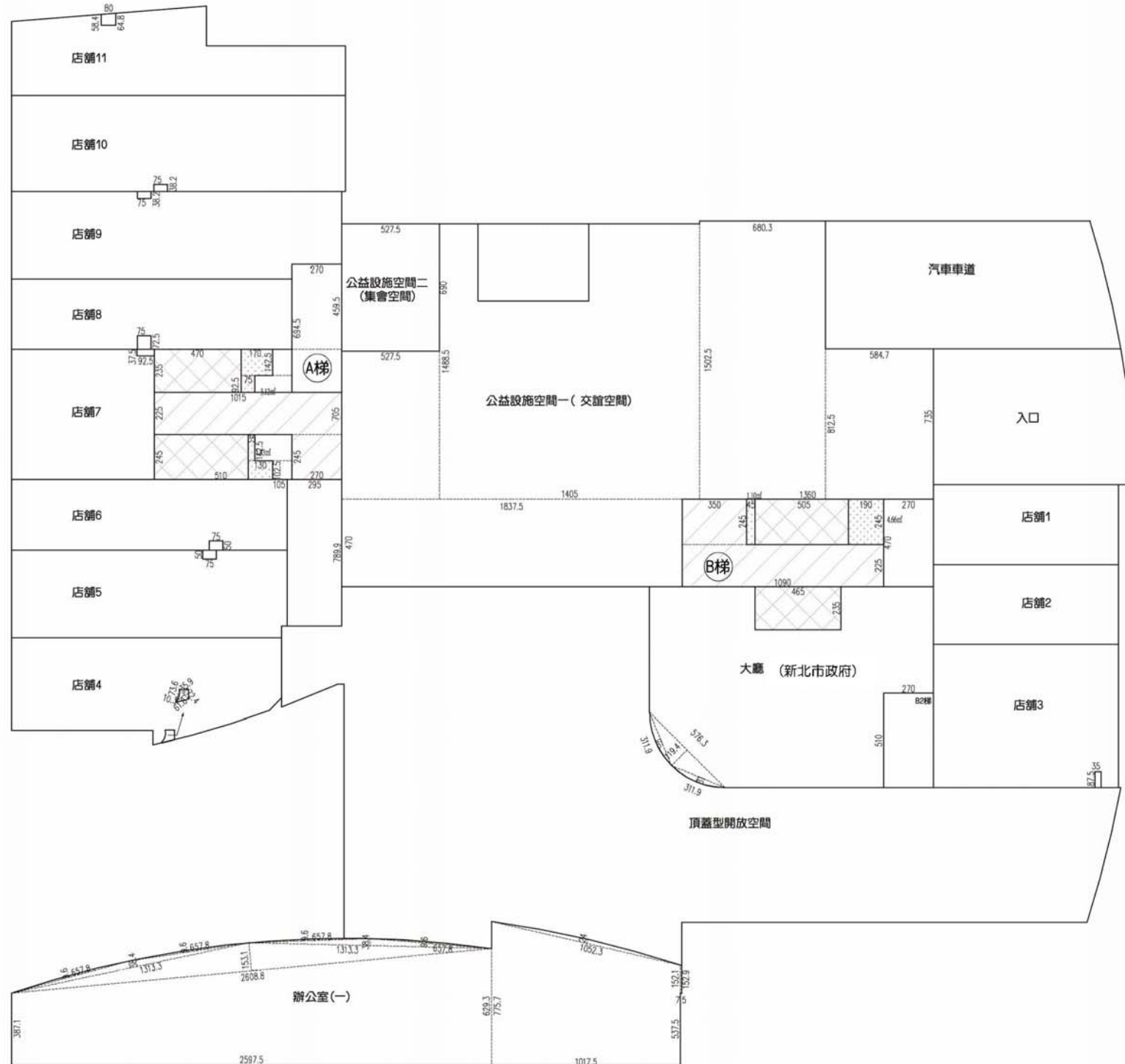


圖 6-22 1F 面積計算圖(一) (S:1/300)



三. 壹層 梯廳、升降機、安全梯、管道 面積計算

梯廳	
A梯:	10.15*2.25+2.7*2.45=29.45m <sup>2</sup>
B梯:	3.5*2.45+10.9*2.25=33.1m <sup>2</sup>
合計=62.55m <sup>2</sup>	
緊急升降機	
A梯:	4.7*2.35+5.1*2.45=23.54m <sup>2</sup>
B梯:	5.05*2.45+4.65*2.35=23.3m <sup>2</sup>
合計=46.84m <sup>2</sup>	
安全梯	
A梯:	2.7*6.945+2.95*7.899=42.05m <sup>2</sup>
B梯:	2.7*(4.7+5.1)=26.46m <sup>2</sup>
合計=68.51m <sup>2</sup>	
室內管道計入設備空間	
A梯:	1.7*1.425+0.75*0.925+0.35*1.425+1.3*1.025=4.95m <sup>2</sup>
B梯:	(0.45+1.9)*2.45=5.76m <sup>2</sup>
店舖三:	0.35*0.875=0.31m <sup>2</sup>
店舖四:	(0.618+0.359)*0.724/2-0.736*0.103*2/3=0.3m <sup>2</sup>
店舖五:	0.75*0.5=0.38m <sup>2</sup>
店舖六:	0.75*0.5=0.38m <sup>2</sup>
店舖七:	0.925*0.375=0.35m <sup>2</sup>
店舖八:	0.75*0.725=0.54m <sup>2</sup>
店舖九:	0.75*0.382=0.29m <sup>2</sup>
店舖十:	0.75*0.382=0.29m <sup>2</sup>
店舖十一:	(0.584+0.648)*0.8/2=0.49m <sup>2</sup>
合計=14.04m <sup>2</sup>	

四. 壹層 梯廳面積檢討

梯廳免計面積檢討  
62.55m<sup>2</sup> < 2500.42\*10%=250.04m<sup>2</sup>

五. 壹層 當層容積樓地板面積

2500.42-62.55-46.84-68.51-14.04-487.34-36.4-138.81+99.15=1745.08m<sup>2</sup>

機電設備面積超過計入一樓

梯廳	緊急升降機	安全梯	管道	公益設施 (交誼空間)	大廳 (新北市政府)
----	-------	-----	----	-------------	------------

六. 壹層 圍牆長度

1.57+1.58+10.97+4.17+36.8=55.09M

七. 機電設備面積檢討

	安全梯	緊急升降機	梯間管道	室內管道	小計
1F	68.51	46.84	14.04		=129.39
2F	67.23	46.84	11.5	3.01	=128.58
3F	79.63	46.84	7.63	4.66	=138.96
4-12F	70.92*9=638.28m <sup>2</sup>	46.84*9=421.56m <sup>2</sup>	5.6*9=50.4m <sup>2</sup>	5.1*9=45.9m <sup>2</sup>	=1156.14
13F	114.93	46.84	5.6	15.14+103.48+110.02=228.64m <sup>2</sup>	=396.01
14-23F	70.23*10=702.3m <sup>2</sup>	46.84*10=468.4m <sup>2</sup>	8.87*10=88.7m <sup>2</sup>	3.94*10=39.4m <sup>2</sup>	=1298.8
24-26F	33.98*3=101.94m <sup>2</sup>	23.54*3=70.62m <sup>2</sup>	5.45*3=16.35m <sup>2</sup>	1.4*3=4.2m <sup>2</sup>	=193.11
					=3440.99

免計容積機電設備面積

1989.72+16272.99+4016.19=22278.9m<sup>2</sup>  
22278.9\*15%=3341.84m<sup>2</sup>

實設機電設備面積

3440.99m<sup>2</sup> > 22278.9\*15%=3341.84m<sup>2</sup>  
3440.99-3341.84=99.15m<sup>2</sup>

計入一樓容積樓地板面積

圖 6-23 1F 面積計算圖(二) (S:1/300)



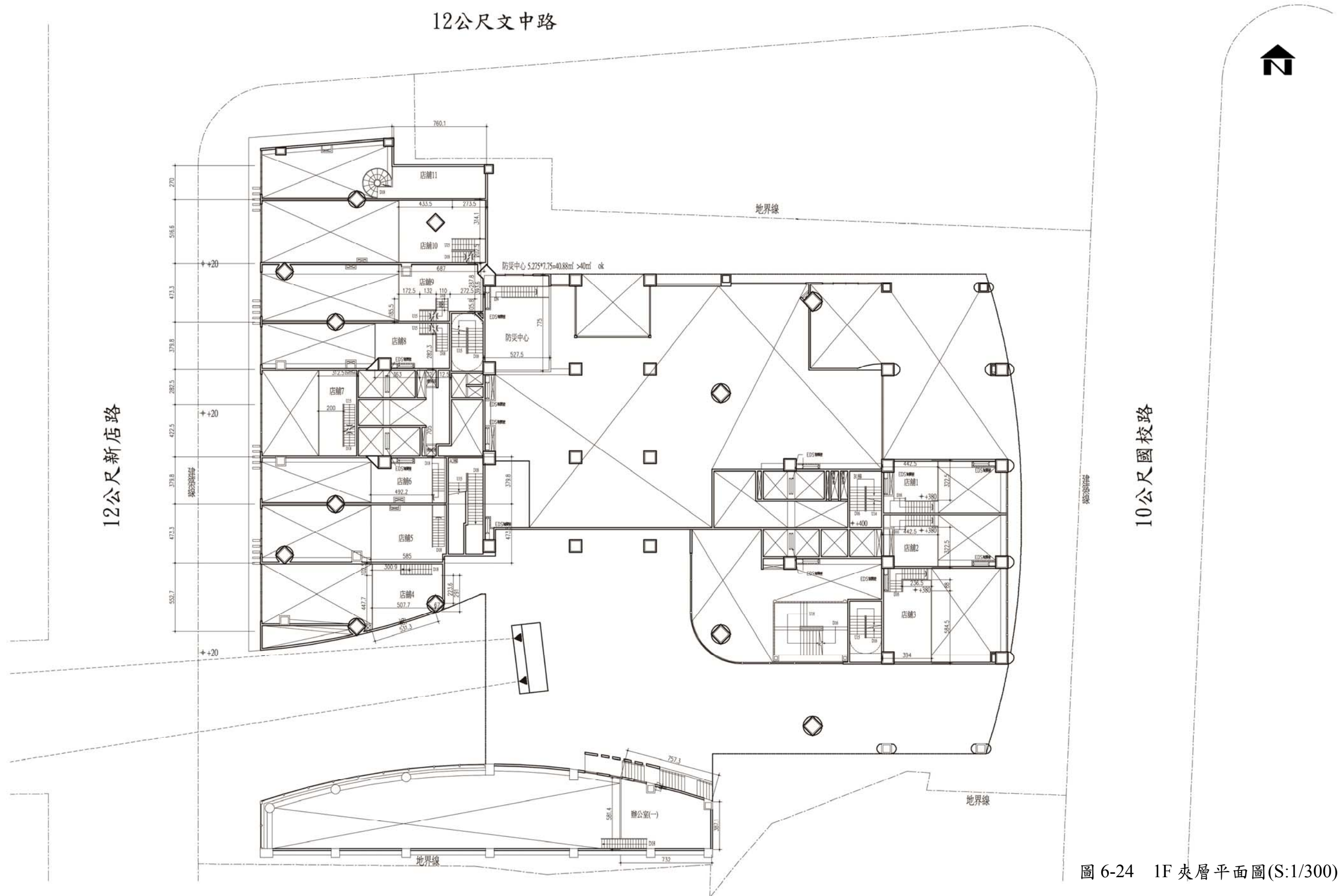


圖 6-24 1F 夾層平面圖(S:1/300)

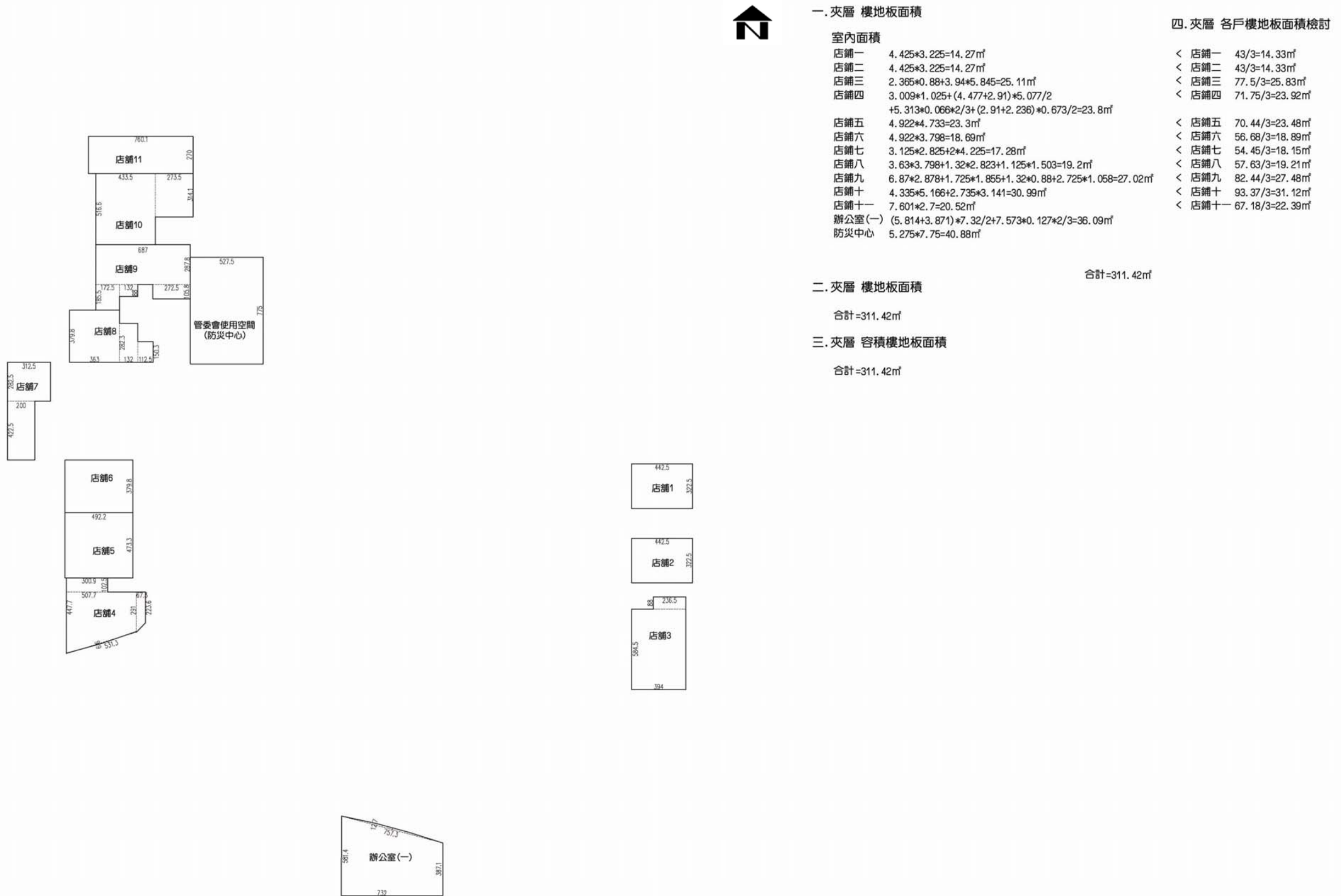
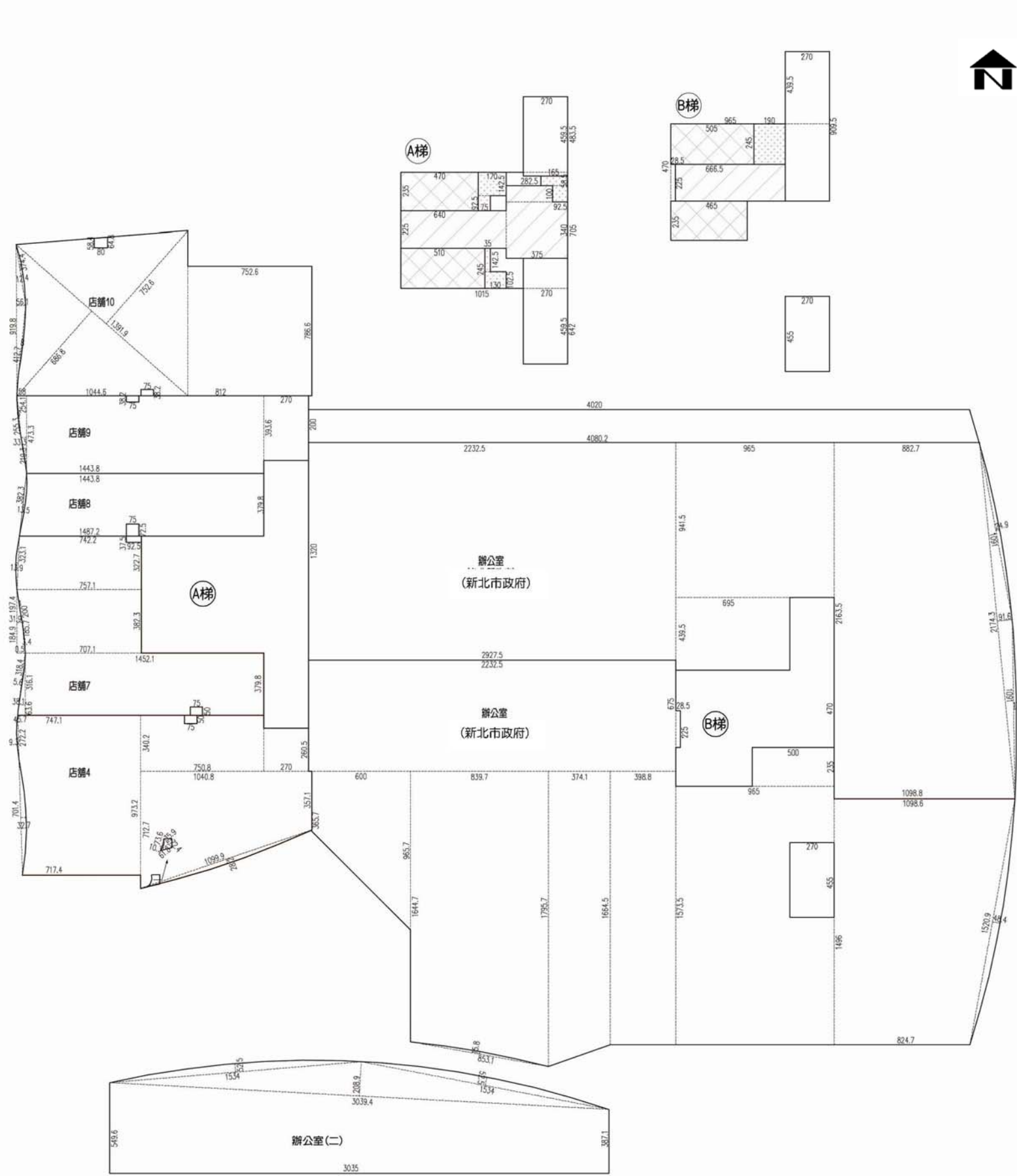


圖 6-25 1F 夾層面積計算圖(S:1/300)





一、貳層 樓地板面積

室內面積

辦公室 (新北市政府)	$22.325 \times 13.2 + 9.65 \times 9.415 + 6.95 \times 4.395$ $+ (8.827 + 10.988) \times 21.635 / 2 + 21.743 \times 0.916 / 2$ $+ 10.91 \times (0.249 + 0.171) \times 2 / 3 = 643.45 \text{ m}^2$
辦公室 (新北市政府)	$22.325 \times 6.75 + (3.657 + 9.657) \times 6 / 2$ $+ (16.447 + 17.957) \times 8.397 / 2 - 8.531 \times 0.158 \times 2 / 3$ $+ (17.957 + 16.645) \times 3.741 / 2 + 16.645 \times 3.988$ $+ 5 \times 2.35 + 9.65 \times 15.735 + (10.986 + 8.247) \times 14.96 / 2$ $+ 0.484 \times 15.209 \times 2 / 3 + 0.285 \times 2.25 - 2.7 \times 4.55 = 766 \text{ m}^2$
辦公室 (二)	$(5.496 + 3.871) \times 30.35 / 2 + 30.394 \times 2.089 / 2$ $+ 15.34 \times 0.525 \times 2 / 3 = 184.63 \text{ m}^2$
店舖四	$(7.471 + 7.174) \times 9.732 / 2 + 0.093 \times 2.722 \times 2 / 3 - 0.327 \times 7.014 \times 2 / 3$ $+ 7.508 \times 3.402 + 2.7 \times 2.605 + (7.127 + 3.571) \times 10.408 / 2$ $+ 10.999 \times 0.282 \times 2 / 3 = 160.22 \text{ m}^2$
店舖七	$0.139 \times 3.231 \times 2 / 3 + (7.422 + 7.571) \times 3.227 / 2$ $+ 7.571 \times 3.823 - (0.319 + 0.5) \times 1.849 / 2$ $- 1.857 \times 0.034 / 2 - 0.319 \times 1.974 / 2$ $- 0.01 \times 2 / 2$ $+ 14.521 \times 3.798 + 0.381 \times 3.161 / 2 + (0.381 + 0.457) \times 0.636 / 2$ $- 3.184 \times 0.056 / 2 = 108.25 \text{ m}^2$
店舖八	$(14.438 + 14.872) \times 3.798 / 2 - 3.823 \times 0.135 \times 2 / 3 = 55.32 \text{ m}^2$
店舖九	$0.06 \times 2.553 / 2 + (0.58 + 0.333) \times 2.541 / 2$ $+ 0.333 \times 2.193 / 2 + 14.438 \times 4.733 + 2.7 \times 3.936 = 80.56 \text{ m}^2$
店舖十	$(6.868 + 7.526) \times 13.919 / 2 + 7.526 \times 7.866$ $- 9.198 \times 0.561 / 2 - 0.124 \times 3.744 / 2$ $- 0.08 \times 4.127 / 2 = 156.4 \text{ m}^2$
合計	2154.83 m <sup>2</sup>

梯間面積

A梯	$2.7 \times 4.595 \times 2 + 10.15 \times 7.05 = 96.37 \text{ m}^2$
B梯	$2.7 \times 4.395 + 9.65 \times 4.7 + 4.65 \times 2.35$ $+ 2.7 \times 4.55 - 0.285 \times 2.25 = 79.79 \text{ m}^2$
合計	176.16 m <sup>2</sup>

二、貳層 樓地板面積

2154.83 + 176.16 = 2330.99 m<sup>2</sup>

三、貳層 陽台、梯廳、升降機、安全梯、管道 面積計算

陽台面積

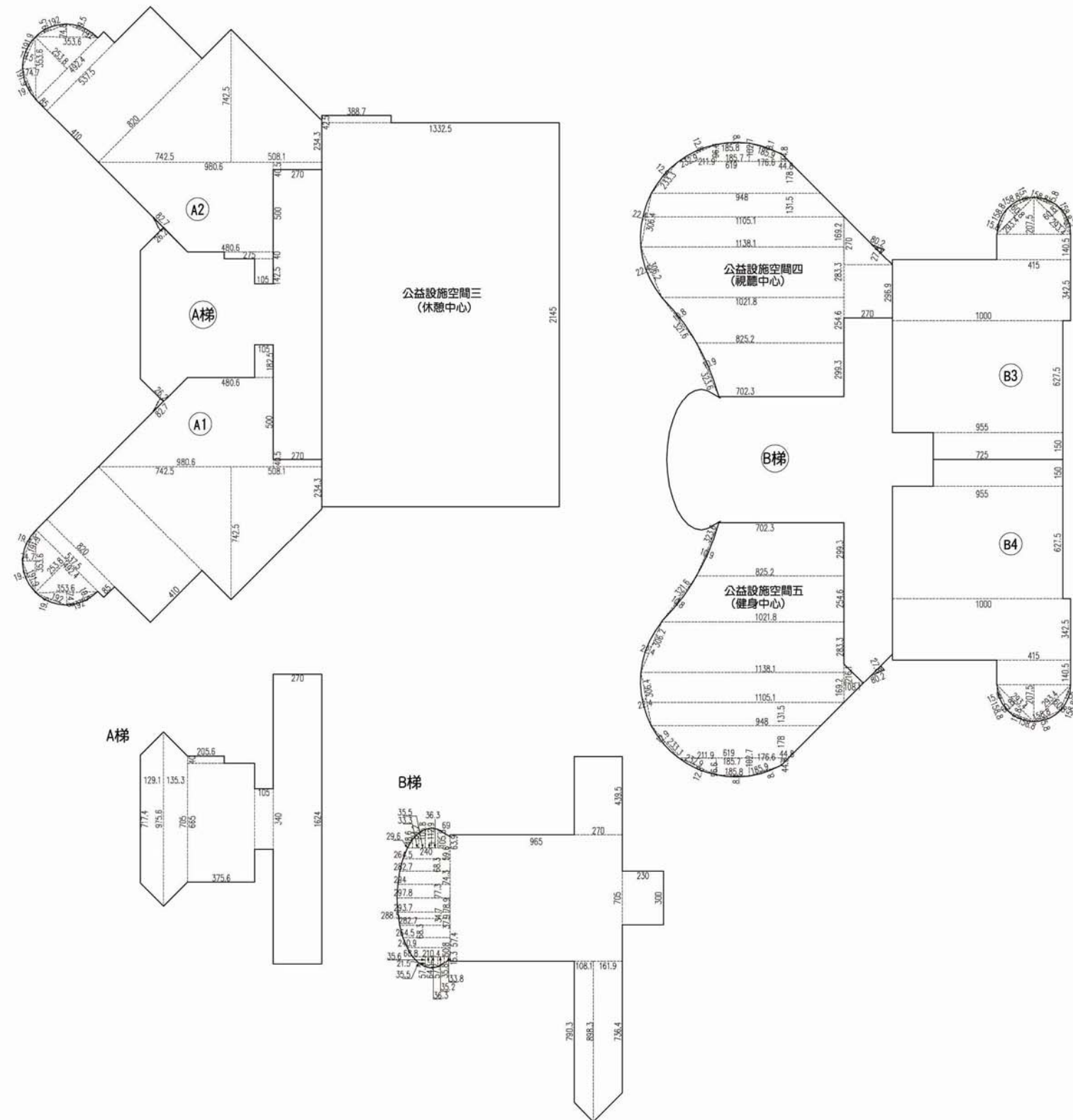
辦公室 (新北市政府)	$40.2 + 40.802 \times 2 / 2 = 81 \text{ m}^2$	合計 81 m <sup>2</sup>
梯廳	A梯: $6.4 \times 2.25 + 2.825 \times 1 + 3.75 \times 3.4 = 29.98 \text{ m}^2$ B梯: $6.665 \times 2.25 = 15 \text{ m}^2$	合計 = 44.98 m <sup>2</sup>
緊急升降機	A梯: $4.7 \times 2.35 + 5.1 \times 2.45 = 23.54 \text{ m}^2$ B梯: $5.05 \times 2.45 + 4.65 \times 2.35 = 23.3 \text{ m}^2$	合計 = 46.84 m <sup>2</sup>
安全梯	A梯: $2.7 \times 4.835 + 2.7 \times 6.42 = 30.39 \text{ m}^2$ B梯: $2.7 \times (9.095 + 4.55) = 36.84 \text{ m}^2$	合計 = 67.23 m <sup>2</sup>
管道	A梯: $1.7 \times 1.425 + 0.75 \times 0.925 + 1.65 \times 0.585$ $+ 0.925 \times 1 + 0.35 \times 1.425 + 1.3 \times 1.025 = 6.84 \text{ m}^2$ B梯: $1.9 \times 2.45 = 4.66 \text{ m}^2$	合計 = 11.5 m <sup>2</sup>
室內管道計入設備空間	店舖四: $0.75 \times 0.5 + (0.618 + 0.359) \times 0.724 / 2 - 0.736 \times 0.103 \times 2 / 3 = 0.68 \text{ m}^2$ 店舖七: $0.75 \times 0.5 + 0.925 \times 0.375 = 0.72 \text{ m}^2$ 店舖八: $0.75 \times 0.725 = 0.54 \text{ m}^2$ 店舖九: $0.75 \times 0.382 = 0.29 \text{ m}^2$ 店舖十: $0.75 \times 0.382 + (0.584 + 0.648) \times 0.8 / 2 = 0.78 \text{ m}^2$	合計 3.01 m <sup>2</sup>

四、貳層 容積樓地板面積計算及檢討

陽台	81 m <sup>2</sup>	< 2330.99 * 10% = 233.1 m <sup>2</sup>	OK
梯廳	44.98 m <sup>2</sup>	< 2330.99 * 10% = 233.1 m <sup>2</sup>	OK
陽台+梯廳	81 + 44.98 = 125.98 m <sup>2</sup>	< 2330.99 * 15% = 349.65 m <sup>2</sup>	OK
緊急升降機	46.84 m <sup>2</sup>	< 2330.99 - 44.98 - 3.01 - 67.23 - 46.84 - 11.5 - 766 = 1391.43 m <sup>2</sup>	
管道	11.5 m <sup>2</sup>		
安全梯	67.23 m <sup>2</sup>		
辦公室	2154.83 m <sup>2</sup>		

圖 6-27 2F 面積計算圖(S:1/300)





一、參層 樓地板面積  
室內面積

A1  $5.375 \times 0.85 + 8.2 \times 4.1 + 7.425 \times 7.425 / 2 + (7.425 + 2.343) \times 5.081 / 2$   
 $+ (9.806 + 4.806) \times 5 / 2 + 2.7 \times 0.405 + 1.825 \times 1.05 + 4.924 \times 2.538 / 2$   
 $+ 3.536 \times 0.747 / 2 + 3.536 \times 0.748 / 2 + 1.92 \times 0.195 \times 2 / 3 + 2$   
 $+ (0.194 + 0.195) \times 1.919 \times 2 / 3 = 140 \text{m}^2$   
 陽台過二米  
 $0.827 \times 0.262 / 2 = 0.11 \text{m}^2$   
 小計  $140 + 0.11 = 140.11 \text{m}^2$

A2  $5.375 \times 0.85 + 8.2 \times 4.1 + 7.425 \times 7.425 / 2 + (7.425 + 2.343) \times 5.081 / 2$   
 $+ (9.806 + 4.806) \times 5 / 2 + 2.7 \times 0.405 + 2.75 \times 0.4 + 1.05 \times 1.425$   
 $+ 4.924 \times 2.538 / 2 + 3.536 \times 0.747 / 2 + 3.536 \times 0.748 / 2$   
 $+ 1.92 \times 0.195 \times 2 / 3 + (0.194 + 0.195) \times 1.919 \times 2 / 3 = 140.68 \text{m}^2$   
 陽台過二米  
 $0.827 \times 0.262 / 2 = 0.11 \text{m}^2$   
 小計  $140.68 + 0.11 = 140.79 \text{m}^2$

公益設施空間三 (休憩中心)  $3.887 \times 0.425 + 13.325 \times 21.45 = 287.47 \text{m}^2$

公益設施空間四 (視聽中心)  $(7.023 + 8.252) \times 2.993 / 2 + (8.252 + 10.218) \times 2.546 / 2$   
 $+ (10.218 + 11.381) \times 2.833 / 2 + (11.381 + 11.051) \times 1.692 / 2$   
 $+ 2.7 \times 2.969 + 2.7 \times 7 / 2 + (11.051 + 9.48) \times 1.315 / 2 + (9.48 + 6.19) \times 1.78 / 2$   
 $- 3.236 \times 0.109 \times 2 / 3 - 3.216 \times 0.108 \times 2 / 3 + (3.062 + 3.064) \times 0.224 \times 2 / 3$   
 $+ 2.333 \times 0.129 \times 2 / 3 + 2.329 \times 0.128 \times 2 / 3 + (1.858 + 1.859) \times 0.081 \times 2 / 3$   
 $+ 2.119 \times 0.966 / 2 + (0.966 + 1.027) \times 1.857 / 2 + (1.027 + 0.448) \times 1.766 / 2$   
 $+ 0.448 \times 0.448 / 2 = 140.38 \text{m}^2$   
 陽台過二米  $0.802 \times 0.278 / 2 = 0.11 \text{m}^2$   $140.38 + 0.11 = 140.49 \text{m}^2$

公益設施空間五 (健身中心)  $(7.023 + 8.252) \times 2.993 / 2 + (8.252 + 10.218) \times 2.546 / 2$   
 $+ (10.218 + 11.381) \times 2.833 / 2 + (11.381 + 11.051) \times 1.692 / 2$   
 $+ 1.081 \times 2.161 / 2 + (11.051 + 9.48) \times 1.315 / 2 + (9.48 + 6.19) \times 1.78 / 2$   
 $- 3.236 \times 0.109 \times 2 / 3 - 3.216 \times 0.108 \times 2 / 3 + (3.062 + 3.064) \times 0.224 \times 2 / 3$   
 $+ 2.333 \times 0.129 \times 2 / 3 + 2.329 \times 0.128 \times 2 / 3 + (1.858 + 1.859) \times 0.081 \times 2 / 3$   
 $+ 2.119 \times 0.966 / 2 + (0.966 + 1.027) \times 1.857 / 2 + (1.027 + 0.448) \times 1.766 / 2$   
 $+ 0.448 \times 0.448 / 2 = 129.88 \text{m}^2$   
 陽台過二米  $0.802 \times 0.278 / 2 = 0.11 \text{m}^2$   $129.88 + 0.11 = 129.99 \text{m}^2$

B3  $1.588 \times 0.158 \times 2 / 3 + 4 \times 2.934 + 0.608 \times 2.075 \times 4.15 / 2$   
 $+ 1.405 \times 4.15 + 10 \times 3.425 + 9.55 \times 6.275 + 7.25 \times 1.5 = 117.64 \text{m}^2$

B4  $1.588 \times 0.158 \times 2 / 3 + 4 \times 2.934 + 0.608 \times 2.075 \times 4.15 / 2$   
 $+ 1.405 \times 4.15 + 10 \times 3.425 + 9.55 \times 6.275 + 7.25 \times 1.5 = 117.64 \text{m}^2$

合計:  $1074.13 \text{m}^2$

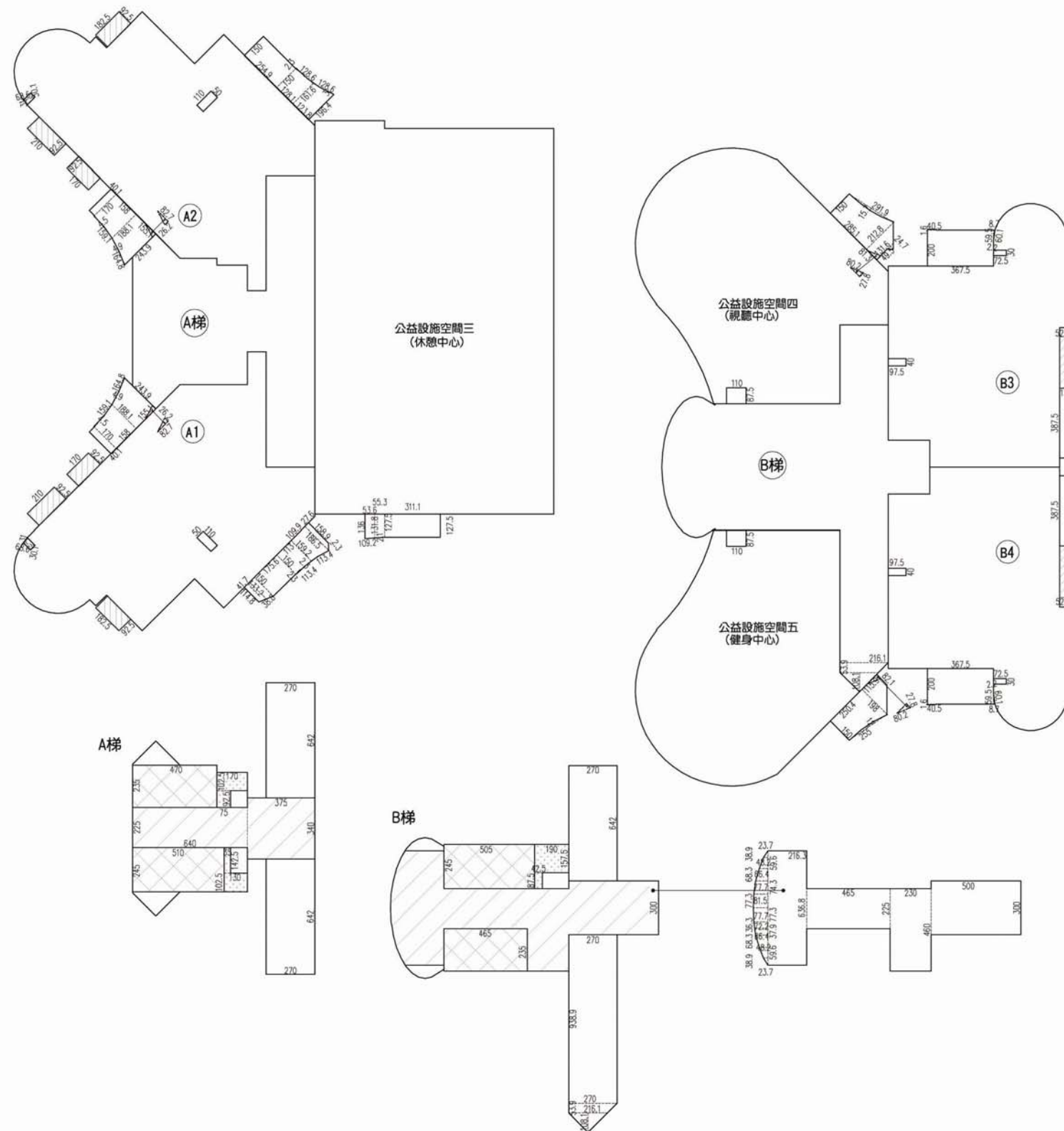
梯間面積

A梯  $(7.174 + 9.756) \times 1.291 / 2 + (9.756 + 7.05) \times 1.353 / 2$   
 $+ 2.056 \times 0.4 + 3.756 \times 6.65 + 1.05 \times 3.4 + 2.7 \times 16.24 = 95.52 \text{m}^2$

B梯  $2.7 \times 4.395 + 9.65 \times 7.05 + 2.3 \times 3 + 1.081 \times (7.903 + 8.983) / 2$   
 $+ 1.619 \times (8.983 + 7.364) / 2$   
 $+ 0.486 \times 0.296 / 2$   
 $+ (0.486 + 0.842) \times 0.333 / 2 + (0.842 + 1.058) \times 0.355 / 2$   
 $+ (1.058 + 1.129) \times 0.363 / 2 + (1.129 + 1.058) \times 0.363 / 2$   
 $+ (1.058 + 0.639) \times 0.69 / 2$   
 $+ (2.4 + 2.645) \times 0.596 / 2$   
 $+ (2.645 + 2.827) \times 0.683 / 2 + (2.827 + 2.94) \times 0.743 / 2$   
 $+ (2.94 + 2.978) \times 0.773 / 2 + (2.978 + 2.937) \times 0.789 / 2$   
 $+ (2.937 + 2.885) \times 0.347 / 2 + (2.885 + 2.827) \times 0.379 / 2$   
 $+ (2.827 + 2.645) \times 0.683 / 2 + (2.645 + 2.409) \times 0.574 / 2$   
 $+ (2.409 + 2.104) \times 0.508 / 2$   
 $+ (0.355 + 0.688) \times 0.356 / 2$   
 $+ 0.355 \times 0.215 / 2 + (0.572 + 0.643) \times 0.363 / 2$   
 $+ (0.643 + 0.572) \times 0.363 / 2 + (0.572 + 0.358) \times 0.352 / 2$   
 $+ (0.153 + 0.358) \times 0.338 / 2 = 128.78 \text{m}^2$   
 合計:  $224.3 \text{m}^2$

二、參層 樓地板面積  
 $1074.13 + 224.3 = 1298.43 \text{m}^2$

圖 6-29 3F 面積計算圖(一) (S:1/300)



三、參層 陽台、雨遮、梯廳、升降機、安全梯、管道面積

陽台面積

A1  $(1.148+1.332) \times 0.417/2 + (1.332+1.5) \times 0.388/2$   
 $+ 1.756 \times 1.5 + (1.592+1.5) \times 1.13/2$   
 $+ (1.865+1.592) \times 1.099/2 + (1.589+1.865) \times 0.276/2$   
 $- 1.134 \times 0.023 \times 2/3 = 7.79 \text{ m}^2$

$1.7 \times 0.401 + (1.7+1.881) \times 1.58/2 + (1.881+2.439) \times 1.551/2$   
 $- 1.591 \times 0.045 \times 2/3 - 1.648 \times 0.049 \times 2/3 = 6.76 \text{ m}^2$

陽台過二米  $0.827 \times 0.262/2 = 0.11 \text{ m}^2$   
 $7.79 + 6.76 - 0.11 = 14.44 \text{ m}^2$

A2  $2.549 \times 1.5 + (1.5+1.616) \times 1.281/2 + (1.616+1.964) \times 1.238/2$   
 $- 1.286 \times 0.023 \times 2/3 - 1.286 \times 0.03 \times 2/3 = 7.99 \text{ m}^2$

$1.7 \times 0.401 + (1.7+1.881) \times 1.58/2 + (1.881+2.439) \times 1.551/2$   
 $- 1.591 \times 0.045 \times 2/3 - 1.648 \times 0.049 \times 2/3 = 6.76 \text{ m}^2$

陽台過二米  $0.827 \times 0.262/2 = 0.11 \text{ m}^2$   
 $7.99 + 6.76 - 0.11 = 14.64 \text{ m}^2$

公益設施空間三 (休憩中心)  
 $(1.36+1.318) \times 0.536/2 + (1.318+1.275) \times 0.553/2$   
 $+ 3.111 \times 1.275 - 1.092 \times 0.021 \times 2/3 = 5.39 \text{ m}^2$

公益設施空間四 (視聽中心)  
 $(1.5+2.128) \times 2.851/2 + (2.128+1.316) \times 0.813/2$   
 $+ 0.247 \times 0.495/2 - 2.919 \times 0.157 \times 2/3 = 6.33 \text{ m}^2$   
 陽台過二米  $0.802 \times 0.278/2 = 0.11 \text{ m}^2$   
 $6.33 - 0.11 = 6.22 \text{ m}^2$

公益設施空間五 (健身中心)  
 $(0.821+1.98) \times 1.159/2 + (1.98+1.5) \times 2.504/2$   
 $- 2.55 \times 0.12 \times 2/3 = 5.78 \text{ m}^2$   
 陽台過二米  $0.802 \times 0.278/2 = 0.11 \text{ m}^2$   
 $5.78 - 0.11 = 5.67 \text{ m}^2$

B3  $3.675 \times 2 + 0.405 \times 0.016/2 + 0.087 \times 0.595/2$   
 $- 0.601 \times 0.022 \times 2/3$   
 $+ (1.509+1.597) \times 3.875/2 + 0.031 \times 3.876 \times 2/3 = 13.47 \text{ m}^2$

B4  $3.675 \times 2 + 0.405 \times 0.016/2 + 0.087 \times 0.595/2$   
 $- 0.601 \times 0.022 \times 2/3$   
 $+ (1.509+1.597) \times 3.875/2 + 0.031 \times 3.876 \times 2/3 = 13.47 \text{ m}^2$

合計 73.3 m<sup>2</sup>

雨遮面積

A1  $(1.7+2.1+1.825) \times 0.925 = 5.2 \text{ m}^2$   
 A2  $(1.7+2.1+1.825) \times 0.925 = 5.2 \text{ m}^2$   
 B3  $0.525 \times 2.875 = 1.51 \text{ m}^2$   
 B4  $0.525 \times 2.875 = 1.51 \text{ m}^2$

合計 13.42 m<sup>2</sup>

梯廳

A梯:  $6.4 \times 2.25 + 3.75 \times 3.4 = 27.15 \text{ m}^2$   
 B梯:  $0.237 \times 0.389/2 + (0.237+0.482) \times 0.596/2$   
 $+ (0.482+0.664) \times 0.683/2 + (0.664+0.777) \times 0.743/2$   
 $+ (0.777+0.815) \times 0.773/2 + (0.815+0.777) \times 0.773/2$   
 $+ (0.777+0.722) \times 0.363/2 + (0.722+0.664) \times 0.379/2$   
 $+ (0.664+0.482) \times 0.683/2 + (0.482+0.237) \times 0.596/2$   
 $+ 0.237 \times 0.389/2 + 2.163 \times 6.368 + 4.65 \times 2.25$   
 $+ 2.3 \times 4.6 + 5 \times 3 = 53.42 \text{ m}^2$

合計=80.57 m<sup>2</sup>

緊急升降機

A梯:  $4.7 \times 2.35 + 5.1 \times 2.45 = 23.54 \text{ m}^2$   
 B梯:  $5.05 \times 2.45 + 4.65 \times 2.35 = 23.3 \text{ m}^2$

合計=46.84 m<sup>2</sup>

安全梯

A梯:  $(2.7 \times 6.42) \times 2 = 34.67 \text{ m}^2$   
 B梯:  $2.7 \times 6.42 + 2.7 \times 9.389 + (2.7 \times 2.161) \times 0.539/2$   
 $+ 2.161 \times 1.081/2 = 45.16 \text{ m}^2$

合計=79.83 m<sup>2</sup>

管道

A梯  $1.7 \times 1.025 + 0.75 \times 0.925$   
 $+ 0.35 \times 1.425 + 1.3 \times 1.025 = 4.27 \text{ m}^2$   
 B梯  $1.9 \times 1.575 + 0.425 \times 0.875 = 3.36 \text{ m}^2$

合計=7.63 m<sup>2</sup>

室內管道計入設備空間

A1  $(0.31+0.301) \times 0.686/2 + 1.1 \times 0.5 = 0.76 \text{ m}^2$   
 A2  $(0.31+0.301) \times 0.686/2 + 1.1 \times 0.5 = 0.76 \text{ m}^2$   
 B3  $0.975 \times 0.4 + 0.725 \times 0.3 = 0.61 \text{ m}^2$   
 B4  $0.975 \times 0.4 + 0.725 \times 0.3 = 0.61 \text{ m}^2$

公益設施空間四  
 $1.1 \times 0.875 = 0.96 \text{ m}^2$

公益設施空間五  
 $1.1 \times 0.875 = 0.96 \text{ m}^2$

合計=4.66 m<sup>2</sup>

四、參層 容積樓地板面積計算及檢討

陽台面積檢討

$73.3 \text{ m}^2 < 1298.43 \times 10\% = 129.84 \text{ m}^2$

梯廳免計面積檢討

$80.57 \text{ m}^2 < 1298.43 \times 10\% = 129.84 \text{ m}^2$

陽台+梯廳面積檢討

$73.3 + 80.57 = 153.87 \text{ m}^2 < 1298.43 \times 15\% = 194.76 \text{ m}^2$

當層容積樓地板面積

$1298.43 - 80.57 - 4.66 - 79.83 - 46.84 - 7.63$   
 梯廳 管道 安全梯 緊急 管道  
 升降機

$- 287.47 - 140.49 - 129.99 = 520.95 \text{ m}^2$   
 公益三 公益四 公益五

圖 6-30 3F 面積計算圖(二) (S:1/300)





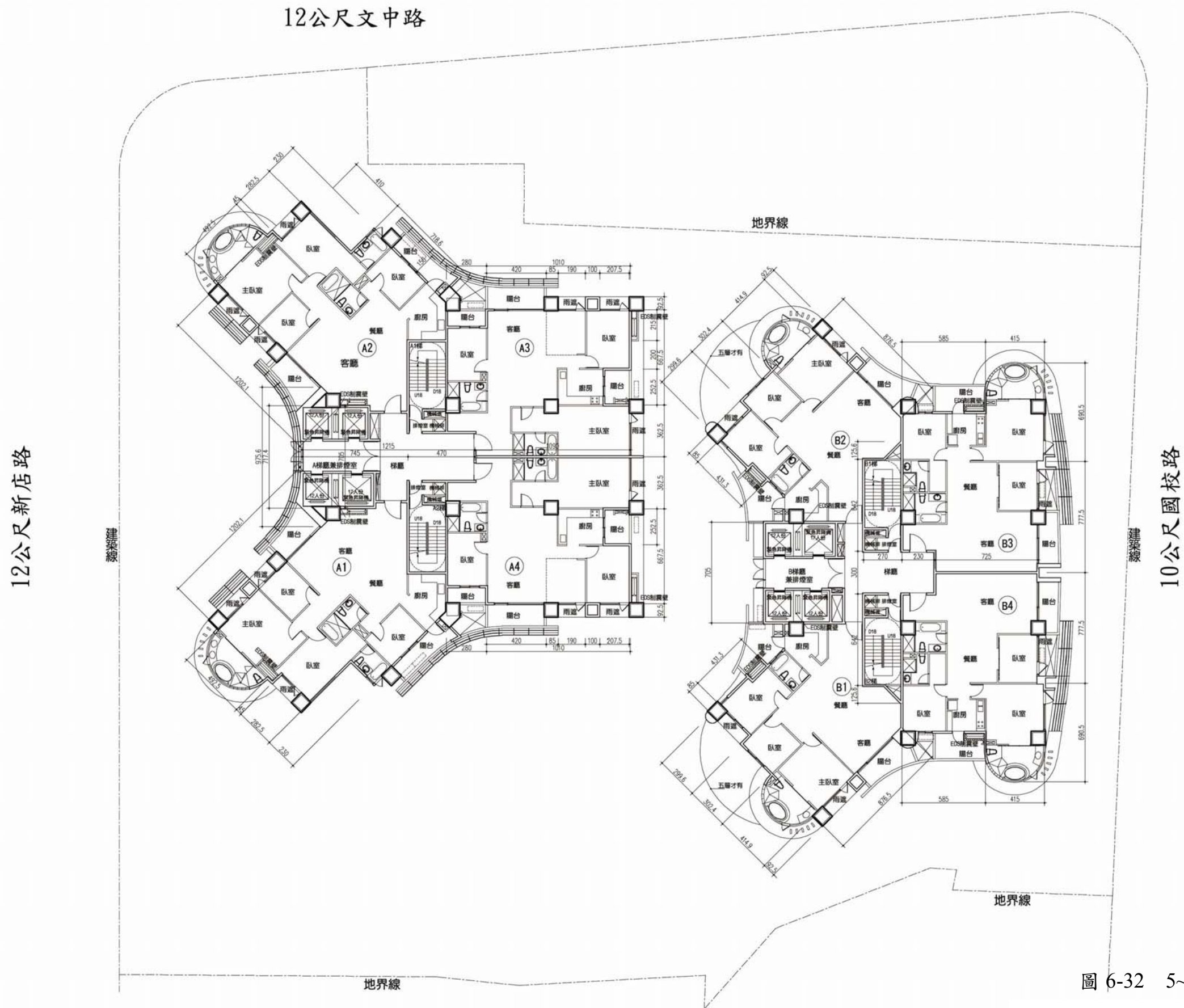


圖 6-32 5~11F 平面圖(S:1/300)

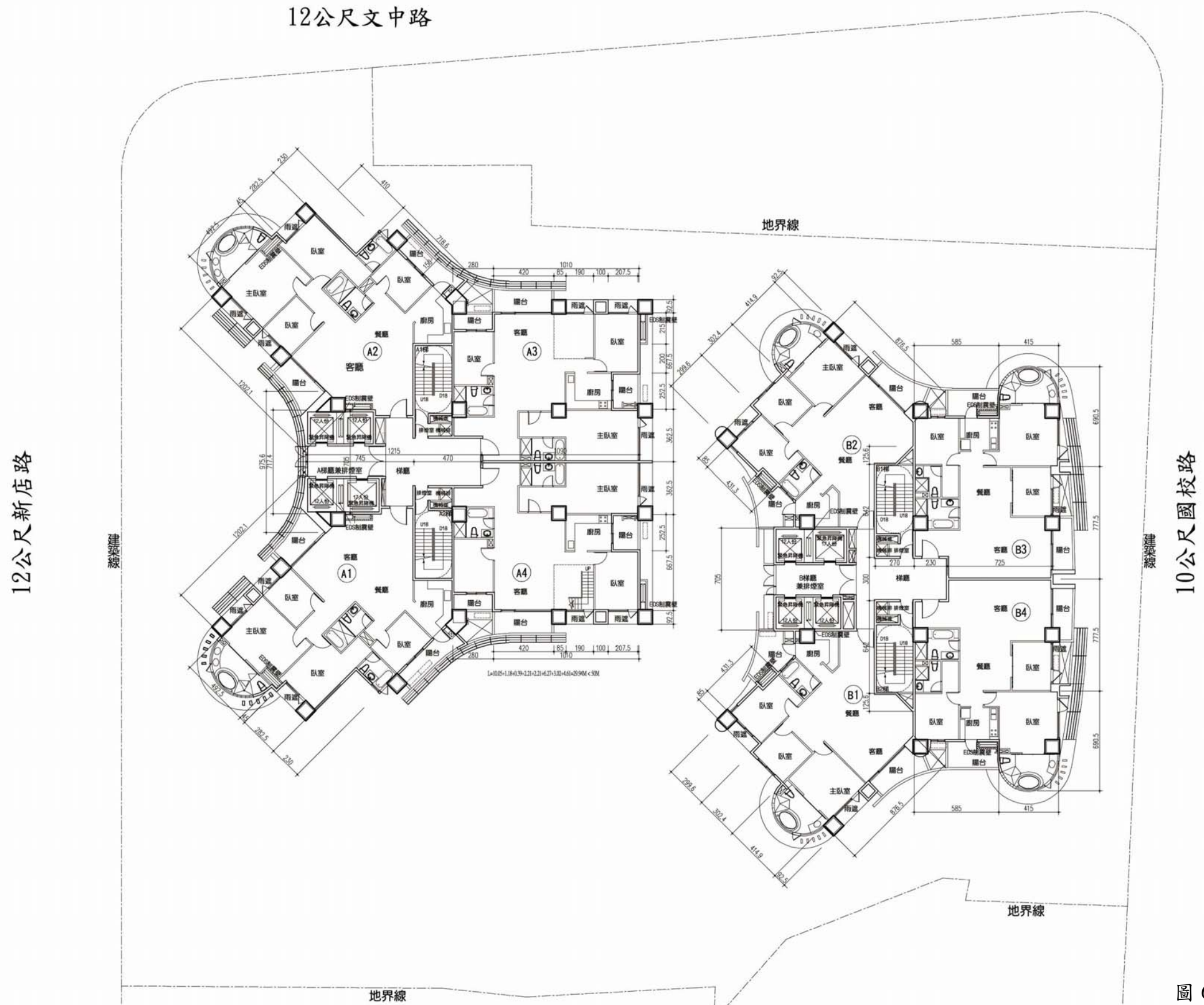


圖 6-33 12F 平面圖(S:1/300)



一、肆~拾貳層 各層樓地板面積

室內面積

- A1  $5.375 \times 0.85 + 8.2 \times 4.1 + 7.425 \times 7.425 / 2 + (7.425 + 2.343) \times 5.081 / 2$   
 $+ (9.806 + 4.806) \times 5 / 2 + 2.7 \times 0.405 + 2.35 \times 0.4 + 4.924 \times 2.538 / 2$   
 $+ 3.536 \times 0.747 / 2 + 3.536 \times 0.748 / 2 + 1.92 \times 0.195 \times 2 / 3 + 2$   
 $+ (0.194 + 0.195) \times 1.919 \times 2 / 3 = 139.02 \text{ m}^2$   
 陽台過二米  
 $0.827 \times 0.262 / 2 = 0.11 \text{ m}^2$   
小計 139.02 + 0.11 = 139.13 m<sup>2</sup>
- A2  $5.375 \times 0.85 + 8.2 \times 4.1 + 7.425 \times 7.425 / 2 + (7.425 + 2.343) \times 5.081 / 2$   
 $+ (9.806 + 4.806) \times 5 / 2 + 2.7 \times 0.405 + 2.75 \times 0.4 + 4.924 \times 2.538 / 2$   
 $+ 3.536 \times 0.747 / 2 + 3.536 \times 0.748 / 2 + 1.92 \times 0.195 \times 2 / 3 + 2$   
 $+ (0.194 + 0.195) \times 1.919 \times 2 / 3 = 139.18 \text{ m}^2$   
 陽台過二米  
 $0.827 \times 0.262 / 2 = 0.11 \text{ m}^2$   
小計 139.18 + 0.11 = 139.29 m<sup>2</sup>
- A3  $2 \times 7.4 + 8.25 \times 1.2 + 9.05 \times 9.1 + 1.85 \times (4.15 + 3.625) = 121.44 \text{ m}^2$
- A4  $2 \times 7.4 + 8.25 \times 1.2 + 9.05 \times 9.1 + 1.85 \times (4.15 + 3.625) = 121.44 \text{ m}^2$
- B1  $1.622 \times 0.165 \times 2 / 3 + 4 \times 2.987 \times 0.634 / 2 + 4.149 \times 2.15 / 2$   
 $+ 8.765 \times 2.989 + (2.989 + 1.776) \times 1.212 / 2 + 0.849 \times 4.184$   
 $+ 4.313 \times 7.181 + 6.755 \times 1.608 + (1.885 + 5.94) \times 4.054 / 2$   
 $+ (5.94 + 4.395) \times 1.546 / 2 + (2.186 + 3.208) \times 1.021 / 2 = 108.14 \text{ m}^2$

陽台過二米

$(0.585 + 0.664) \times 3.228 / 2 + 0.024 \times 3.064 / 2 + 0.802 \times 0.278 / 2$   
 $- 3.064 \times 0.138 \times 2 / 3 = 1.88 \text{ m}^2$

小計 108.14 + 1.88 = 110.02 m<sup>2</sup>

- B2  $1.622 \times 0.165 \times 2 / 3 + 4 \times 2.987 \times 0.634 / 2 + 4.149 \times 2.15 / 2$   
 $+ 8.765 \times 2.989 + (2.989 + 1.776) \times 1.212 / 2 + 0.849 \times 4.184$   
 $+ 4.313 \times 7.181 + 6.755 \times 1.608 + (1.885 + 5.94) \times 4.054 / 2$   
 $+ (5.94 + 4.395) \times 1.546 / 2 + (2.186 + 3.208) \times 1.021 / 2 = 108.14 \text{ m}^2$

陽台過二米

$(0.585 + 0.664) \times 3.228 / 2 + 0.024 \times 3.064 / 2 + 0.802 \times 0.278 / 2$   
 $- 3.064 \times 0.138 \times 2 / 3 = 1.88 \text{ m}^2$

小計 108.14 + 1.88 = 110.02 m<sup>2</sup>

- B3  $1.588 \times 0.158 \times 2 / 3 + 4 \times 2.934 \times 0.608 + 2.075 \times 4.15 / 2$   
 $+ 1.405 \times 4.15 + 10 \times 3.425 + 9.55 \times 6.275 + 7.25 \times 1.5 = 117.64 \text{ m}^2$

- B4  $1.588 \times 0.158 \times 2 / 3 + 4 \times 2.934 \times 0.608 + 2.075 \times 4.15 / 2$   
 $+ 1.405 \times 4.15 + 10 \times 3.425 + 9.55 \times 6.275 + 7.25 \times 1.5 = 117.64 \text{ m}^2$

合計 = 976.62 m<sup>2</sup>

樓電梯間

- A梯  $(7.174 + 9.756) \times 1.291 / 2 + (9.756 + 7.05) \times 1.353 / 2$   
 $+ (2.056 + 2.456) \times 0.4 + 2.7 \times 4.995 \times 2 + 7.506 \times 6.25$   
 $+ 2 \times 3.4 = 104.79 \text{ m}^2$

- B梯  $6.95 \times 7.05 + 2.7 \times 15.84$   
 $+ 1.256 \times 1.256 \times 2 + 2.3 \times 3 = 100.24 \text{ m}^2$

合計 = 205.03 m<sup>2</sup>

二、肆~拾貳層 各層樓地板面積

976.62 + 205.03 = 1181.65 m<sup>2</sup>

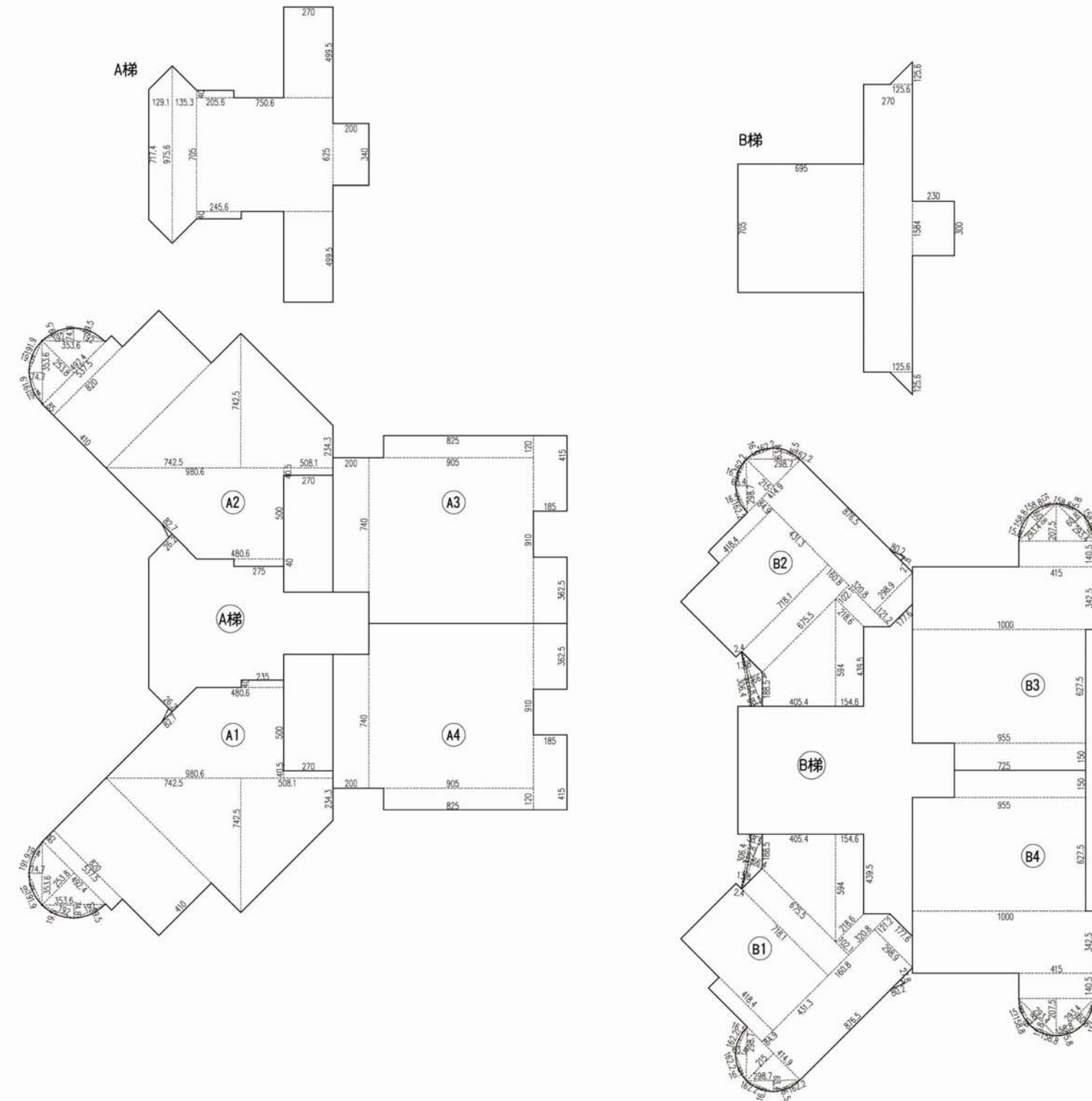
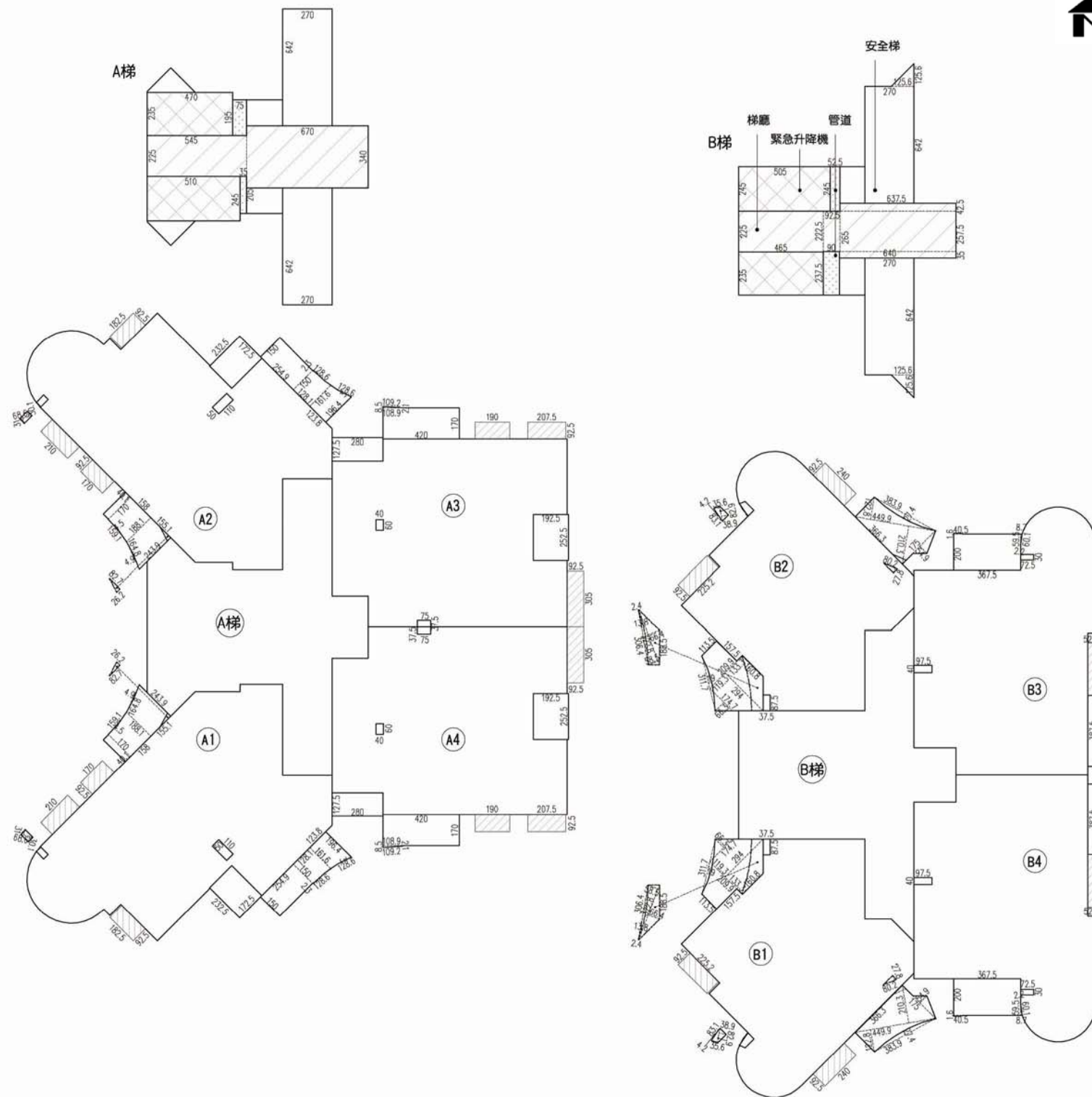


圖 6-34 4~12F 面積計算圖(一) (S:1/300)

三、肆~拾貳層 各層陽台、雨遮、梯廳、升降機、安全梯、管道 面積計算



陽台	
A1	$2.549 \times 1.5 + (1.5 + 1.616) \times 1.281/2 + (1.616 + 1.964) \times 1.238/2 - 1.286 \times 0.023 \times 2/3 - 1.286 \times 0.03 \times 2/3 = 7.99 \text{ m}^2$ $1.7 \times 0.401 + (1.7 + 1.881) \times 1.58/2 + (1.881 + 2.439) \times 1.551/2 - 1.591 \times 0.045 \times 2/3 - 1.648 \times 0.049 \times 2/3 = 6.76 \text{ m}^2$ 陽台過二米 $0.827 \times 0.262/2 = 0.11 \text{ m}^2$ $7.99 + 6.76 - 0.11 = 14.64 \text{ m}^2$
A2	$2.549 \times 1.5 + (1.5 + 1.616) \times 1.281/2 + (1.616 + 1.964) \times 1.238/2 - 1.286 \times 0.023 \times 2/3 - 1.286 \times 0.03 \times 2/3 = 7.99 \text{ m}^2$ $1.7 \times 0.401 + (1.7 + 1.881) \times 1.58/2 + (1.881 + 2.439) \times 1.551/2 - 1.591 \times 0.045 \times 2/3 - 1.648 \times 0.049 \times 2/3 = 6.76 \text{ m}^2$ 陽台過二米 $0.827 \times 0.262/2 = 0.11 \text{ m}^2$ $7.99 + 6.76 - 0.11 = 14.64 \text{ m}^2$
A3	$2.8 \times 1.275 + 4.2 \times 1.7 + 1.089 \times 0.085/2 - 1.092 \times 0.021 \times 2/3 + 1.925 \times 2.525 = 15.6 \text{ m}^2$
A4	$2.8 \times 1.275 + 4.2 \times 1.7 + 1.089 \times 0.085/2 - 1.092 \times 0.021 \times 2/3 + 1.925 \times 2.525 = 15.6 \text{ m}^2$
B1	$4.499 \times (2.103 + 1.228)/2 + 1.75 \times 0.549/2 - 3.839 \times 0.274 \times 2/3 + 1.747 \times 0.663/2 + (1.747 + 2.94) \times 1.193/2 + (2.94 + 1.608) \times 1.333/2 + (2.099 + 1.135) \times 1.575/2 - 3.117 \times 0.19 \times 2/3 = 15.83 \text{ m}^2$ 陽台過二米 $(0.585 + 0.664) \times 3.228/2 + 0.024 \times 3.064/2 + 0.802 \times 0.278/2 - 3.064 \times 0.138 \times 2/3 = 1.88 \text{ m}^2$ $15.83 - 1.88 = 13.95 \text{ m}^2$
B2	$4.499 \times (2.103 + 1.228)/2 + 1.75 \times 0.549/2 - 3.839 \times 0.274 \times 2/3 + 1.747 \times 0.663/2 + (1.747 + 2.94) \times 1.193/2 + (2.94 + 1.608) \times 1.333/2 + (2.099 + 1.135) \times 1.575/2 - 3.117 \times 0.19 \times 2/3 = 15.83 \text{ m}^2$ 陽台過二米 $(0.585 + 0.664) \times 3.228/2 + 0.024 \times 3.064/2 + 0.802 \times 0.278/2 - 3.064 \times 0.138 \times 2/3 = 1.88 \text{ m}^2$ $15.83 - 1.88 = 13.95 \text{ m}^2$
B3	$3.675 \times 2 + 0.405 \times 0.016/2 + 0.087 \times 0.595/2 - 0.601 \times 0.022 \times 2/3 + (1.509 + 1.597) \times 3.875/2 + 0.031 \times 3.876 \times 2/3 = 13.47 \text{ m}^2$
B4	$3.675 \times 2 + 0.405 \times 0.016/2 + 0.087 \times 0.595/2 - 0.601 \times 0.022 \times 2/3 + (1.509 + 1.597) \times 3.875/2 + 0.031 \times 3.876 \times 2/3 = 13.47 \text{ m}^2$
合計 115.32 m <sup>2</sup>	

雨遮	
A1	$(1.7 + 2.1 + 1.825) \times 0.925 = 5.2 \text{ m}^2$
A2	$(1.7 + 2.1 + 1.825) \times 0.925 = 5.2 \text{ m}^2$
A3	$(1.9 + 2.075 + 3.05) \times 0.925 = 6.5 \text{ m}^2$
A4	$(1.9 + 2.075 + 3.05) \times 0.925 = 6.5 \text{ m}^2$
B1	$(2.4 + 2.252) \times 0.925 = 4.3 \text{ m}^2$
B2	$(2.4 + 2.252) \times 0.925 = 4.3 \text{ m}^2$
B3	$0.525 \times 2.875 = 1.51 \text{ m}^2$
B4	$0.525 \times 2.875 = 1.51 \text{ m}^2$

梯廳	
A梯	$5.4 \times 2.25 + 0.7 \times 3.4 = 35.04 \text{ m}^2$
B梯	$4.65 \times 2.25 + 0.925 \times 2.225 + 6.375 \times 2.65 + 6.4 \times 0.35 = 31.65 \text{ m}^2$
合計=66.69 m <sup>2</sup>	

緊急升降機	
A梯	$4.7 \times 2.35 + 5.1 \times 2.45 = 23.54 \text{ m}^2$
B梯	$5.05 \times 2.45 + 4.65 \times 2.35 = 23.3 \text{ m}^2$
合計=46.84 m <sup>2</sup>	

管道	
A梯	$0.75 \times 1.95 + 0.35 \times 2.05 = 2.18 \text{ m}^2$
B梯	$0.525 \times 2.45 + 0.9 \times 2.375 = 3.42 \text{ m}^2$
合計=5.6 m <sup>2</sup>	

安全梯	
A梯	$2.7 \times 6.42 \times 2 = 34.67 \text{ m}^2$
B梯	$(1.256 \times 1.256/2 + 2.7 \times 6.42) \times 2 = 36.25 \text{ m}^2$
合計=70.92 m <sup>2</sup>	

室內管道計入設備空間	
A1	$(0.31 + 0.301) \times 0.686/2 + 1.1 \times 0.5 = 0.76 \text{ m}^2$
A2	$(0.31 + 0.301) \times 0.686/2 + 1.1 \times 0.5 = 0.76 \text{ m}^2$
A3	$0.4 \times 0.6 + 0.75 \times 0.375 = 0.52 \text{ m}^2$
A4	$0.4 \times 0.6 + 0.75 \times 0.375 = 0.52 \text{ m}^2$
B1	$0.375 \times 0.875 + (0.356 + 0.389) \times 0.829/2 + 0.831 \times 0.042 \times 2/3 = 0.66 \text{ m}^2$
B2	$0.375 \times 0.875 + (0.356 + 0.389) \times 0.829/2 + 0.831 \times 0.042 \times 2/3 = 0.66 \text{ m}^2$
B3	$0.975 \times 0.4 + 0.725 \times 0.3 = 0.61 \text{ m}^2$
B4	$0.975 \times 0.4 + 0.725 \times 0.3 = 0.61 \text{ m}^2$
合計=5.1 m <sup>2</sup>	

四、肆~拾貳層 陽台、梯廳面積檢討

陽台面積檢討  
 $115.32 \text{ m}^2 < 1181.65 \times 10\% = 118.17 \text{ m}^2$

梯廳免計面積檢討  
 $66.69 \text{ m}^2 < 1181.65 \times 10\% = 118.17 \text{ m}^2$

陽台+梯廳面積檢討  
 $115.32 + 66.69 = 182.01 \text{ m}^2 > 1181.65 \times 15\% = 177.25 \text{ m}^2$   
 $182.01 - 177.25 = 4.76 \text{ m}^2$   
 計入容積

五、肆~拾貳層 各層容積樓地板面積

$1181.65 - 66.69 - 5.1 - 46.84 - 5.6 - 70.92 + 4.76 = 991.26 \text{ m}^2$   
 梯廳 管道 緊急 管道 計入容積  
 升降機 安全梯

圖 6-35 4~12F 面積計算圖(二) (S:1/300)