



圖 6-36 13F 平面圖(S:1/300)

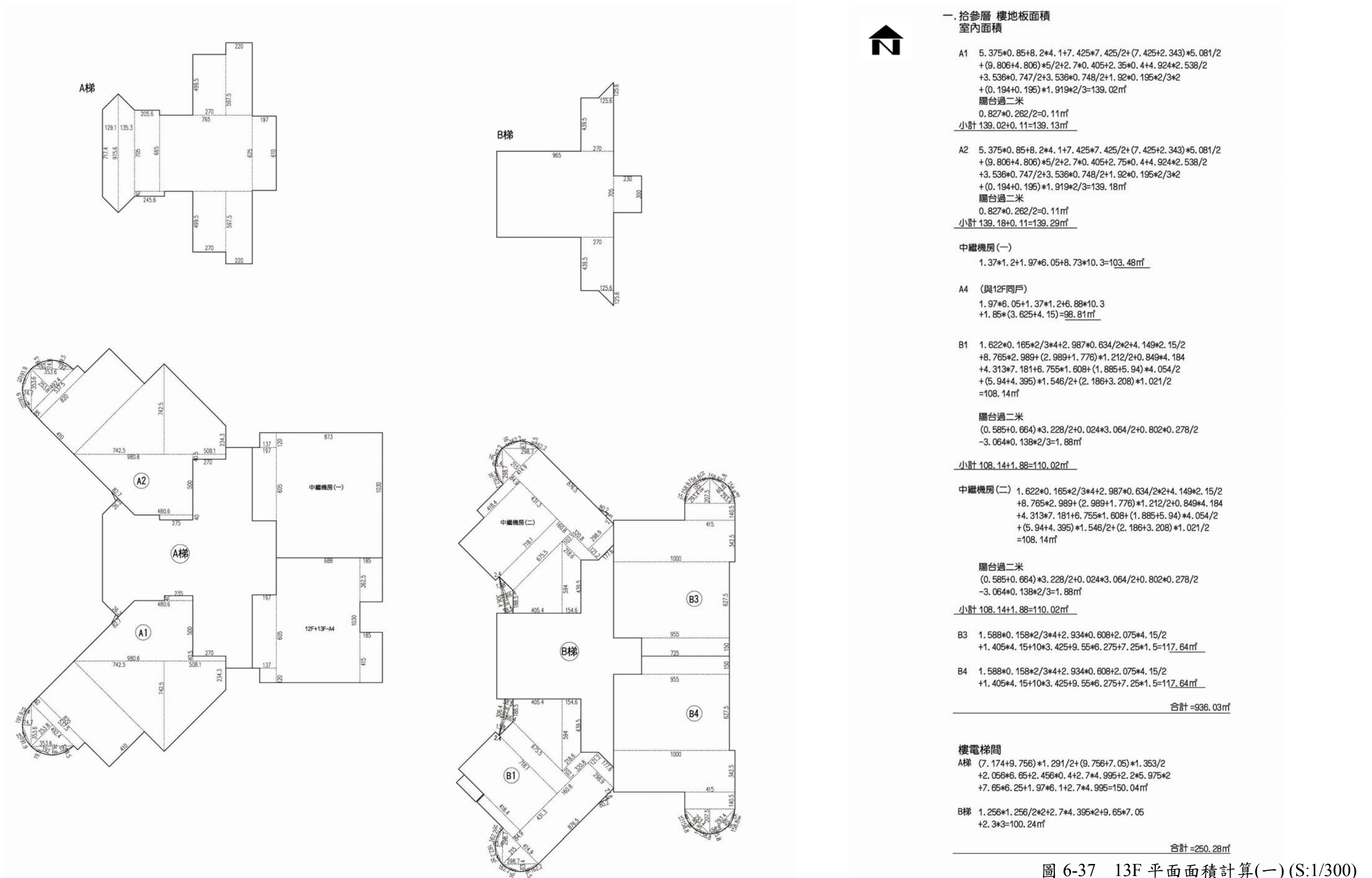


圖 6-37 13F 平面面積計算(一)(S:1/300)

三、拾參層 陽台、雨遮、梯廳、升降機、安全梯、管道 面積計算

陽台

A1 $2.549 \times 1.5 + (1.5 + 1.616) \times 1.281 / 2 + (1.616 + 1.964) \times 1.238 / 2 - 1.286 \times 0.023 \times 2 / 3 - 1.286 \times 0.03 \times 2 / 3 = 7.99 \text{ m}^2$
 $1.7 \times 0.401 + (1.7 + 1.881) \times 1.58 / 2 + (1.881 + 2.439) \times 1.551 / 2 - 1.591 \times 0.045 \times 2 / 3 - 1.648 \times 0.049 \times 2 / 3 = 6.76 \text{ m}^2$
 陽台過二米 $0.827 \times 0.262 / 2 = 0.11 \text{ m}^2$
 $7.99 + 6.76 - 0.11 = 14.64 \text{ m}^2$
 小計=14.64m²

A2 $2.549 \times 1.5 + (1.5 + 1.616) \times 1.281 / 2 + (1.616 + 1.964) \times 1.238 / 2 - 1.286 \times 0.023 \times 2 / 3 - 1.286 \times 0.03 \times 2 / 3 = 7.99 \text{ m}^2$
 $1.7 \times 0.401 + (1.7 + 1.881) \times 1.58 / 2 + (1.881 + 2.439) \times 1.551 / 2 - 1.591 \times 0.045 \times 2 / 3 - 1.648 \times 0.049 \times 2 / 3 = 6.76 \text{ m}^2$
 陽台過二米 $0.827 \times 0.262 / 2 = 0.11 \text{ m}^2$
 $7.99 + 6.76 - 0.11 = 14.64 \text{ m}^2$
 小計=14.64m²

中繼機房(一)
 $2.8 \times 1.275 + 0.075 \times 1.625 + 4.2 \times 1.7 + 1.164 \times 0.0975 / 2 - 1.168 \times 0.0244 \times 2 / 3 = 10.87 \text{ m}^2$

A4 (與12F同戶)
 $2.8 \times 1.275 + 1.925 \times 2.525 = 8.43 \text{ m}^2$

B1 $4.499 \times (2.103 + 1.228) / 2 + 1.75 \times 0.549 / 2 - 3.839 \times 0.274 \times 2 / 3 + 1.747 \times 0.663 / 2 + (1.747 + 2.94) \times 1.193 / 2 + (2.94 + 1.608) \times 1.333 / 2 + (2.099 + 1.135) \times 1.575 / 2 - 3.117 \times 0.19 \times 2 / 3 = 15.83 \text{ m}^2$

陽台過二米
 $(0.585 + 0.664) \times 3.228 / 2 + 0.024 \times 3.064 / 2 + 0.802 \times 0.278 / 2 - 3.064 \times 0.138 \times 2 / 3 = 1.88 \text{ m}^2$
 $15.83 - 1.88 = 13.95 \text{ m}^2$

中繼機房(二)
 $4.499 \times (2.103 + 1.228) / 2 + 1.75 \times 0.549 / 2 - 3.839 \times 0.274 \times 2 / 3 + 1.747 \times 0.663 / 2 + (1.747 + 2.94) \times 1.193 / 2 + (2.94 + 1.608) \times 1.333 / 2 + (2.099 + 1.135) \times 1.575 / 2 - 3.117 \times 0.19 \times 2 / 3 = 15.83 \text{ m}^2$

陽台過二米
 $(0.585 + 0.664) \times 3.228 / 2 + 0.024 \times 3.064 / 2 + 0.802 \times 0.278 / 2 - 3.064 \times 0.138 \times 2 / 3 = 1.88 \text{ m}^2$
 $15.83 - 1.88 = 13.95 \text{ m}^2$

B3 $3.675 \times 2 + 0.405 \times 0.016 / 2 + 0.087 \times 0.595 / 2 - 0.601 \times 0.022 \times 2 / 3 + (1.509 + 1.597) \times 3.875 / 2 + 0.031 \times 3.876 \times 2 / 3 = 13.47 \text{ m}^2$

B4 $3.675 \times 2 + 0.405 \times 0.016 / 2 + 0.087 \times 0.595 / 2 - 0.601 \times 0.022 \times 2 / 3 + (1.509 + 1.597) \times 3.875 / 2 + 0.031 \times 3.876 \times 2 / 3 = 13.47 \text{ m}^2$

合計 103.42m²

雨遮

A1 $(2.1 + 1.7 + 1.825) \times 0.925 = 5.2 \text{ m}^2$
 A2 $(2.1 + 1.7 + 1.825) \times 0.925 = 5.2 \text{ m}^2$
 A4 $(2.075 + 3.05) \times 0.925 = 4.74 \text{ m}^2$
 B1 $(2.252 + 2.40) \times 0.925 = 4.3 \text{ m}^2$
 B3 $0.525 \times 2.875 = 1.51 \text{ m}^2$
 B4 $0.525 \times 2.875 = 1.51 \text{ m}^2$

合計 24.22m²

梯廳

A梯: $5.45 \times 2.25 + 3.75 \times 3.3 = 24.64 \text{ m}^2$
 B梯: $4.65 \times 2.25 + 0.9 \times 2.225 + 6.375 \times 0.425 + 6.4 \times 2.575 = 31.65 \text{ m}^2$
 合計=56.29m²

緊急升降機

A梯: $4.7 \times 2.35 + 5.1 \times 2.45 = 23.54 \text{ m}^2$
 B梯: $5.05 \times 2.45 + 4.65 \times 2.35 = 23.3 \text{ m}^2$
 合計=46.84m²

管道

A梯: $0.75 \times 1.95 + 0.35 \times 2.05 = 2.18 \text{ m}^2$
 B梯: $0.525 \times 2.45 + 0.9 \times 2.375 = 3.42 \text{ m}^2$
 合計=5.6m²

安全梯

A梯: $2.7 \times 6.47 \times 2 + 2.2 \times 7.45 \times 2 + 1.97 \times 1.4 \times 2 + 1.4 \times 3.3 + 0.79 \times (0.475 + 0.575) = 78.68 \text{ m}^2$
 B梯: $(1.256 \times 1.256 / 2 + 2.7 \times 6.42) \times 2 = 36.25 \text{ m}^2$
 合計=114.93m²

室內管道計入設備空間

A1 $1.1 \times 0.5 + (0.31 + 0.301) \times 0.686 / 2 = 0.76 \text{ m}^2$
 A2 $1.1 \times 0.5 + (0.31 + 0.301) \times 0.686 / 2 = 0.76 \text{ m}^2$
 12F-A4 $0.775 \times 0.375 = 0.29 \text{ m}^2$
 B1 $(0.389 + 0.356) \times 0.829 / 2 + 0.831 \times 0.042 \times 2 / 3 + 0.375 \times 0.875 = 0.66 \text{ m}^2$
 B3 $0.975 \times 0.4 + 0.725 \times 0.3 = 0.61 \text{ m}^2$
 B4 $0.975 \times 0.4 + 0.725 \times 0.3 = 0.61 \text{ m}^2$
 A梯 $0.79 \times 2.25 + 2.93 \times 3.3 = 11.45 \text{ m}^2$

合計=15.14m²

四、拾參層 陽台、梯廳面積檢討

陽台面積檢討

$103.42 \text{ m}^2 < 1186.31 \times 10\% = 118.63 \text{ m}^2$

梯廳免計面積檢討

$56.29 \text{ m}^2 < 1186.31 \times 10\% = 118.63 \text{ m}^2$

陽台+梯廳面積檢討

$103.42 + 56.29 = 159.71 \text{ m}^2 < 1186.31 \times 15\% = 177.95 \text{ m}^2$

五、拾參層 容積樓地板面積

$1186.31 - 56.29 - 15.14 - 46.84 - 5.6 - 114.93 - 103.48 - 110.02 = 734.01 \text{ m}^2$
 梯廳 管道 緊急 管道 中繼一
 升降機 安全梯 中繼二

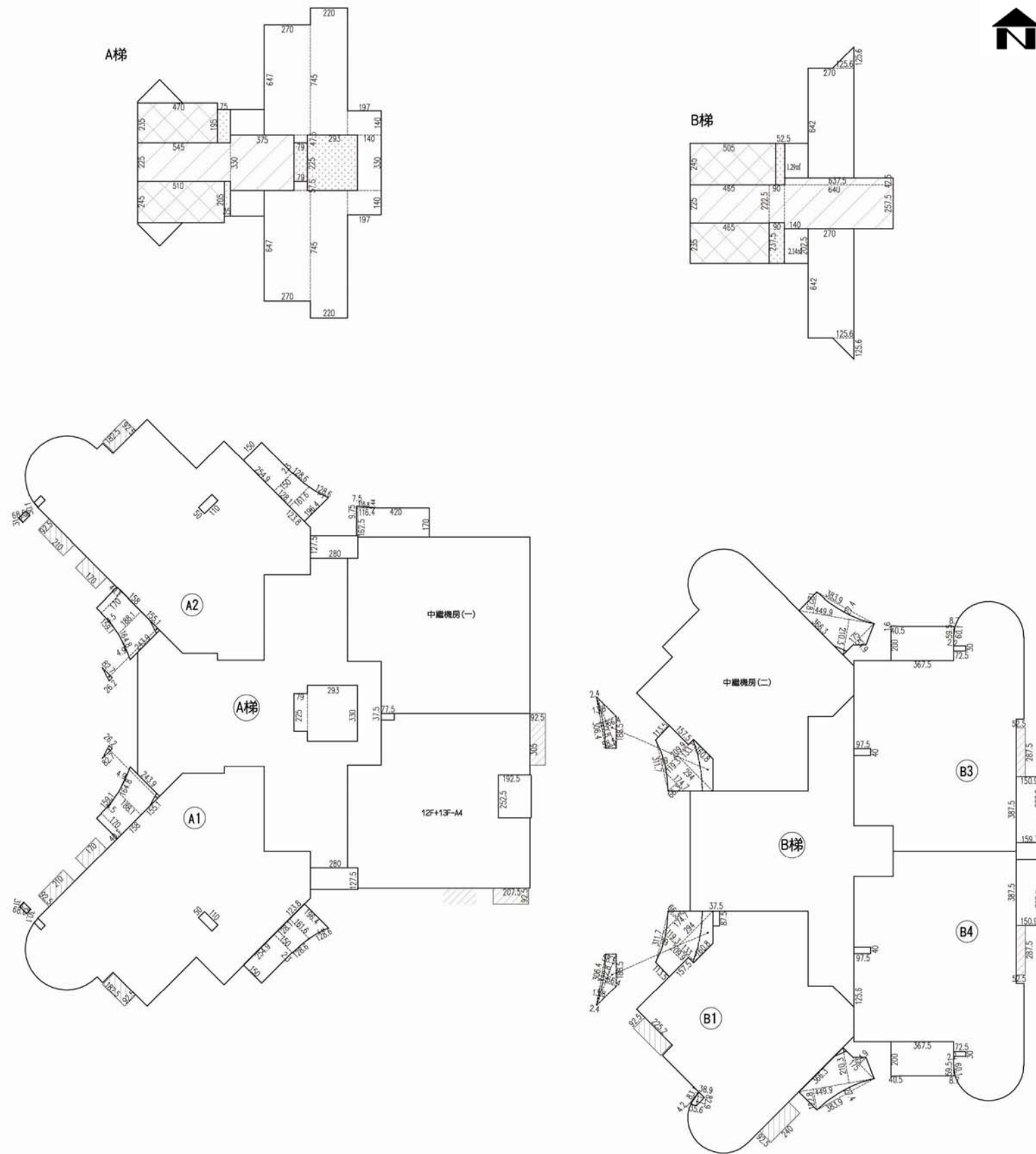


圖 6-38 13F 平面面積計算(二) (S:1/300)

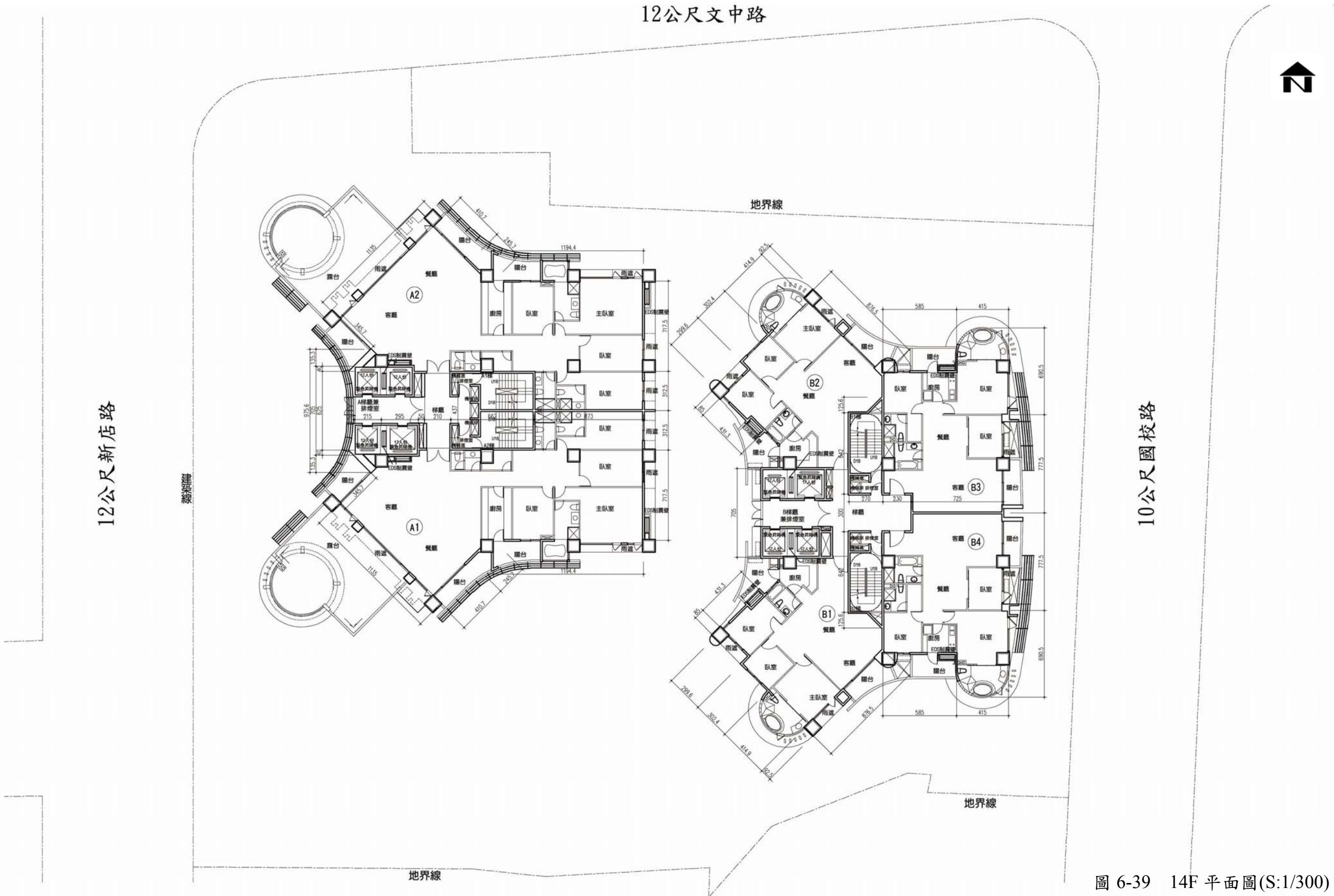


圖 6-39 14F 平面圖(S:1/300)

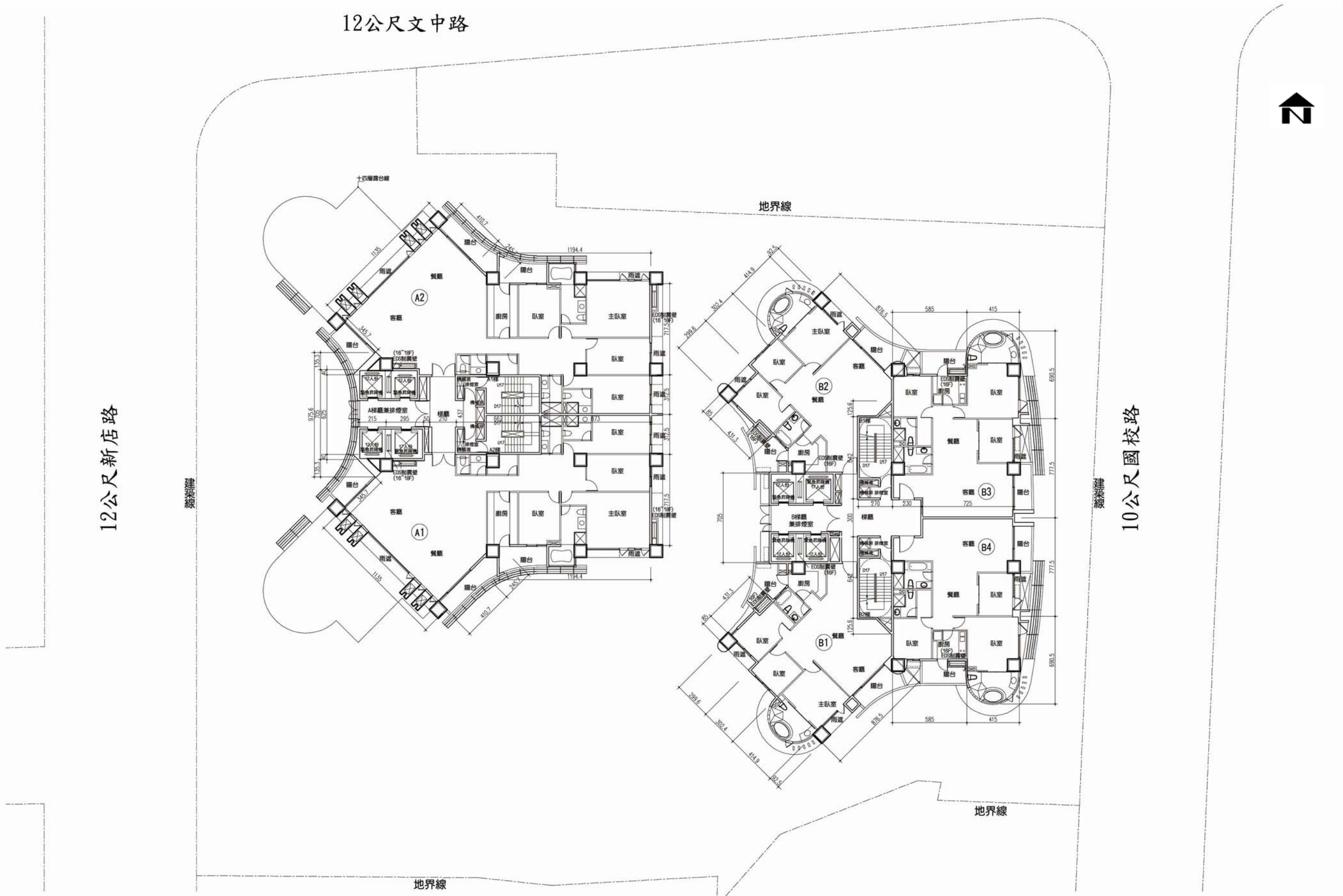
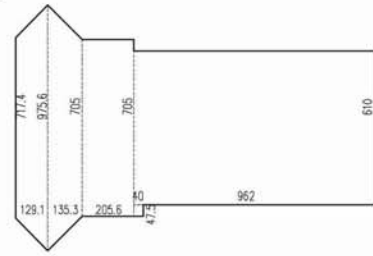
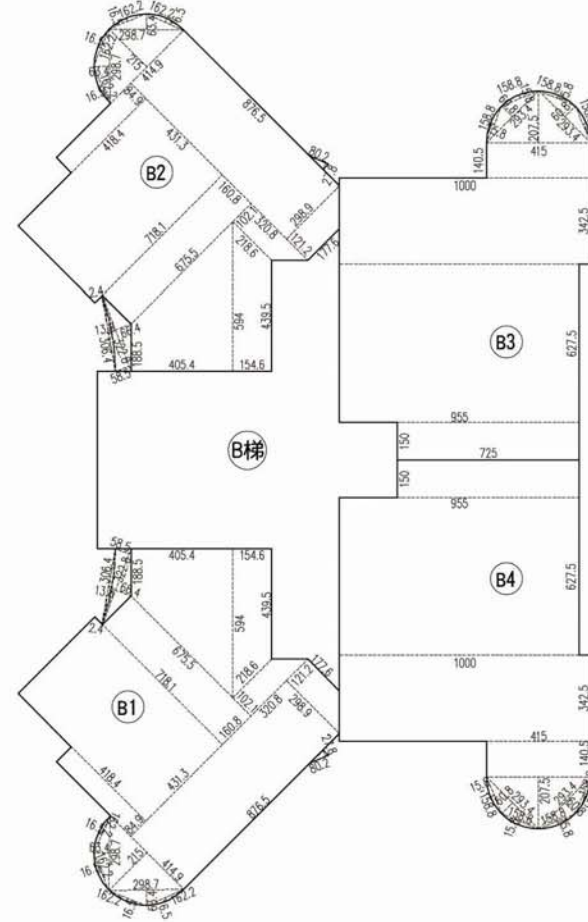
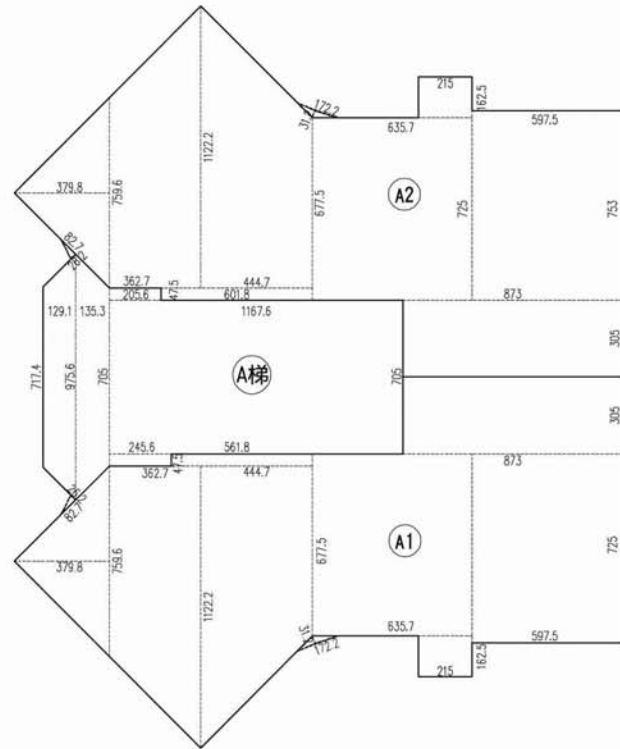
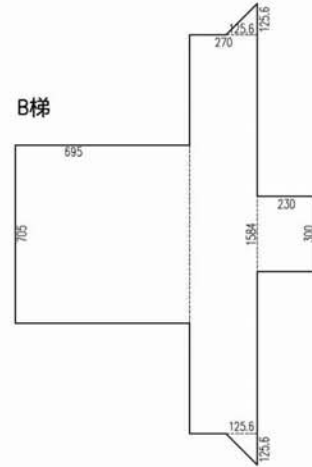


圖 6-40 15~23F 平面圖(S:1/300)

A梯



B梯



一、拾肆~貳拾參層 樓地板面積
室內面積

A1 $3.798 \times 7.596 / 2 + (7.596 + 11.222) \times 3.627 / 2 + (11.222 + 6.775) \times 4.447 / 2$
 $+ 5.618 \times 0.475 + 2.15 \times 1.625 + 6.357 \times 7.25 + 5.975 \times 7.53$
 $+ 8.73 \times 3.05 = 212.44 \text{ m}^2$

陽台過二米
 $1.722 \times 0.312 / 2 + 0.827 \times 0.262 / 2 = 0.38 \text{ m}^2$

小計 $212.44 + 0.38 = 212.82 \text{ m}^2$

A2 $3.798 \times 7.596 / 2 + (7.596 + 11.222) \times 3.627 / 2 + (11.222 + 6.775) \times 4.447 / 2$
 $+ 6.018 \times 0.475 + 2.15 \times 1.625 + 6.357 \times 7.25 + 5.975 \times 7.53$
 $+ 8.73 \times 3.05 = 212.63 \text{ m}^2$

陽台過二米
 $1.722 \times 0.312 / 2 + 0.827 \times 0.262 / 2 = 0.38 \text{ m}^2$

小計 $212.63 + 0.38 = 213.01 \text{ m}^2$

B1 $1.622 \times 0.165 \times 2 / 3 + 4 \times 2.987 \times 0.634 / 2 + 4.149 \times 2.15 / 2$
 $+ 8.765 \times 2.989 + (2.989 + 1.776) \times 1.212 / 2 + 0.849 \times 4.184$
 $+ 4.313 \times 7.181 + 6.755 \times 1.608 + (1.885 + 5.94) \times 4.054 / 2$
 $+ (5.94 + 4.395) \times 1.546 / 2 + (2.186 + 3.208) \times 1.021 / 2 = 108.14 \text{ m}^2$

陽台過二米
 $(0.585 + 0.664) \times 3.228 / 2 + 0.024 \times 3.064 / 2 + 0.802 \times 0.278 / 2$
 $- 3.064 \times 0.138 \times 2 / 3 = 1.88 \text{ m}^2$

小計 $108.14 + 1.88 = 110.02 \text{ m}^2$

B2 $1.622 \times 0.165 \times 2 / 3 + 4 \times 2.987 \times 0.634 / 2 + 4.149 \times 2.15 / 2$
 $+ 8.765 \times 2.989 + (2.989 + 1.776) \times 1.212 / 2 + 0.849 \times 4.184$
 $+ 4.313 \times 7.181 + 6.755 \times 1.608 + (1.885 + 5.94) \times 4.054 / 2$
 $+ (5.94 + 4.395) \times 1.546 / 2 + (2.186 + 3.208) \times 1.021 / 2 = 108.14 \text{ m}^2$

陽台過二米
 $(0.585 + 0.664) \times 3.228 / 2 + 0.024 \times 3.064 / 2 + 0.802 \times 0.278 / 2$
 $- 3.064 \times 0.138 \times 2 / 3 = 1.88 \text{ m}^2$

小計 $108.14 + 1.88 = 110.02 \text{ m}^2$

B3 $1.588 \times 0.158 \times 2 / 3 + 4 \times 2.934 \times 0.608 + 2.075 \times 4.15 / 2$
 $+ 1.405 \times 4.15 + 10 \times 3.425 + 9.55 \times 6.275 + 7.25 \times 1.5 = 117.64 \text{ m}^2$

B4 $1.588 \times 0.158 \times 2 / 3 + 4 \times 2.934 \times 0.608 + 2.075 \times 4.15 / 2$
 $+ 1.405 \times 4.15 + 10 \times 3.425 + 9.55 \times 6.275 + 7.25 \times 1.5 = 117.64 \text{ m}^2$

合計 = 881.15 m²

樓電梯間

A梯 $(7.174 + 9.756) \times 1.291 / 2 + (9.756 + 7.05) \times 1.353 / 2$
 $+ 2.056 \times 7.05 + 0.4 \times 0.475 + 9.62 \times 6.1 = 95.66 \text{ m}^2$

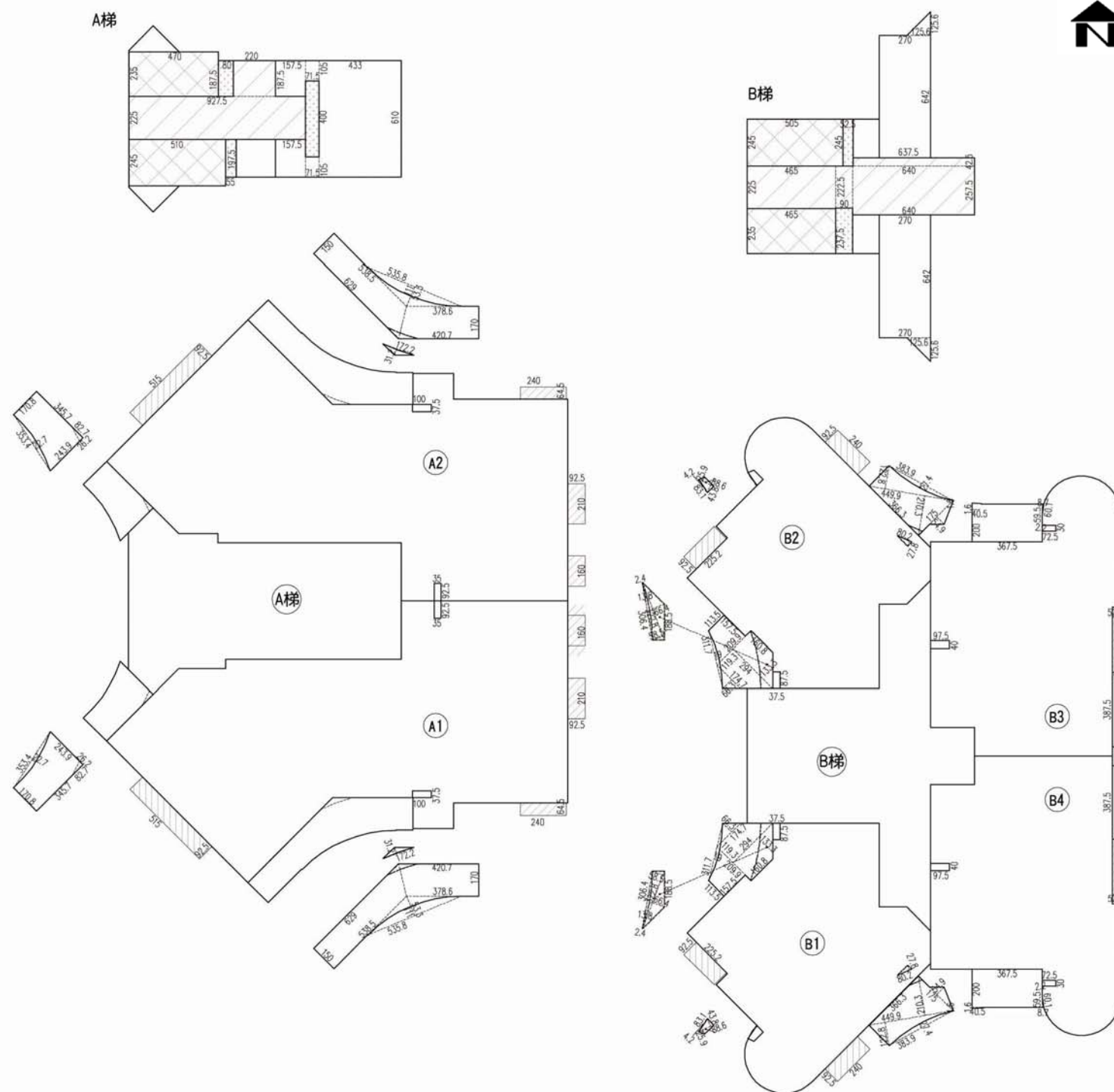
B梯 $6.95 \times 7.05 + 2.7 \times 15.84$
 $+ 1.256 \times 1.256 / 2 \times 2 + 2.3 \times 3 = 100.24 \text{ m}^2$

合計 = 195.9 m²

二、拾肆~貳拾參層 樓地板面積

881.15 + 195.9 = 1077.05 m²

圖 6-41 14~23F 面積計算圖(一) (S:1/300)



三. 拾肆~貳拾參層 陽台、雨遮、梯廳、升降機、安全梯、管道 面積計算

陽台
A1 $(2.439+1.708) \times 3.457/2 - 3.534 \times 0.227 \times 2/3 = 6.63\text{m}^2$

$(6.29+5.385) \times 1.5/2 + (4.207+3.786) \times 1.7/2$
 $+ 5.358 \times 1.11/2 - 5.358 \times 0.533 \times 2/3 = 16.62\text{m}^2$

陽台過二米
 $0.827 \times 0.262/2 + 1.722 \times 0.312/2 = 0.38\text{m}^2$

小計 $6.63+16.62-0.38=22.87\text{m}^2$

A2 $(2.439+1.708) \times 3.457/2 - 3.534 \times 0.227 \times 2/3 = 6.63\text{m}^2$

$(6.29+5.385) \times 1.5/2 + (4.207+3.786) \times 1.7/2$
 $+ 5.358 \times 1.11/2 - 5.358 \times 0.533 \times 2/3 = 16.62\text{m}^2$

陽台過二米
 $0.827 \times 0.262/2 + 1.722 \times 0.312/2 = 0.38\text{m}^2$

小計 $6.63+16.62-0.38=22.87\text{m}^2$

B1 $4.499 \times (2.103+1.228)/2 + 1.75 \times 0.549/2 - 3.839 \times 0.274 \times 2/3$
 $+ 1.747 \times 0.663/2 + (1.747+2.94) \times 1.193/2$
 $+ (2.94+1.608) \times 1.333/2 + (2.099+1.135) \times 1.575/2$
 $- 3.117 \times 0.19 \times 2/3 = 15.83\text{m}^2$

陽台過二米
 $(0.585+0.664) \times 3.228/2 + 0.024 \times 3.064/2 + 0.802 \times 0.278/2$
 $- 3.064 \times 0.138 \times 2/3 = 1.88\text{m}^2$

$15.83-1.88=13.95\text{m}^2$

B2 $4.499 \times (2.103+1.228)/2 + 1.75 \times 0.549/2 - 3.839 \times 0.274 \times 2/3$
 $+ 1.747 \times 0.663/2 + (1.747+2.94) \times 1.193/2$
 $+ (2.94+1.608) \times 1.333/2 + (2.099+1.135) \times 1.575/2$
 $- 3.117 \times 0.19 \times 2/3 = 15.83\text{m}^2$

陽台過二米
 $(0.585+0.664) \times 3.228/2 + 0.024 \times 3.064/2 + 0.802 \times 0.278/2$
 $- 3.064 \times 0.138 \times 2/3 = 1.88\text{m}^2$

$15.83-1.88=13.95\text{m}^2$

B3 $3.675 \times 2 + 0.405 \times 0.016/2 + 0.087 \times 0.595/2$
 $- 0.601 \times 0.022 \times 2/3$
 $+ (1.509+1.597) \times 3.875/2 + 0.031 \times 3.876 \times 2/3 = 13.47\text{m}^2$

B4 $3.675 \times 2 + 0.405 \times 0.016/2 + 0.087 \times 0.595/2$
 $- 0.601 \times 0.022 \times 2/3$
 $+ (1.509+1.597) \times 3.875/2 + 0.031 \times 3.876 \times 2/3 = 13.47\text{m}^2$

合計 100.58m^2

雨遮

A1 $(5.15+2.1+1.6) \times 0.925 + (2.4 \times 0.645) = 9.73\text{m}^2$

A2 $(5.15+2.1+1.6) \times 0.925 + (2.4 \times 0.645) = 9.73\text{m}^2$

B1 $(2.4+2.252) \times 0.925 = 4.3\text{m}^2$

B2 $(2.4+2.252) \times 0.925 = 4.3\text{m}^2$

B3 $0.525 \times 2.875 = 1.51\text{m}^2$

B4 $0.525 \times 2.875 = 1.51\text{m}^2$

合計 31.08m^2

梯廳

A梯: $2.2 \times 1.875 + 9.275 \times 2.25 = 24.99\text{m}^2$

B梯: $4.65 \times 2.25 + 0.9 \times 2.225 + 6.375 \times 0.425 + 6.4 \times 2.575 = 31.65\text{m}^2$

合計 $= 56.64\text{m}^2$

緊急升降機

A梯: $4.7 \times 2.35 + 5.1 \times 2.45 = 23.54\text{m}^2$

B梯: $5.05 \times 2.45 + 4.65 \times 2.35 = 23.3\text{m}^2$

合計 $= 46.84\text{m}^2$

管道

A梯: $0.8 \times 1.875 + 0.55 \times 1.975 + 0.715 \times 4 = 5.45\text{m}^2$

B梯: $0.525 \times 2.45 + 0.9 \times 2.375 = 3.42\text{m}^2$

合計 $= 8.87\text{m}^2$

安全梯

A梯: $1.575 \times (1.875+1.975) + 0.715 \times 1.05 \times 2 + 4.33 \times 6.1 = 33.98\text{m}^2$

B梯: $(2.7 \times 6.42 + 1.256 \times 1.256/2) \times 2 = 36.25\text{m}^2$

合計 $= 70.23\text{m}^2$

室內管道計入設備空間

A1 $1 \times 0.375 + 0.35 \times 0.925 = 0.7\text{m}^2$

A2 $1 \times 0.375 + 0.35 \times 0.925 = 0.7\text{m}^2$

B1 $0.375 \times 0.875 + (0.259 + 0.438) \times 0.886/2$
 $+ 0.831 \times 0.042 \times 2/3 = 0.66\text{m}^2$

B2 $0.375 \times 0.875 + (0.259 + 0.438) \times 0.886/2$
 $+ 0.831 \times 0.042 \times 2/3 = 0.66\text{m}^2$

B3 $0.975 \times 0.4 + 0.725 \times 0.3 = 0.61\text{m}^2$

B4 $0.975 \times 0.4 + 0.725 \times 0.3 = 0.61\text{m}^2$

合計 $= 3.94\text{m}^2$

四. 拾肆~貳拾參層 陽台、梯廳面積檢討

陽台面積檢討

$100.58\text{m}^2 < 1077.05 \times 10\% = 107.71\text{m}^2$

梯廳免計面積檢討

$56.64\text{m}^2 < 1077.05 \times 10\% = 107.71\text{m}^2$

陽台+梯廳面積檢討

$100.58+56.64=157.22\text{m}^2 < 1077.05 \times 15\% = 161.56\text{m}^2$

五. 拾肆~貳拾參層 容積樓地板面積

$1077.05 - 56.64 - 3.94 - 70.23 - 46.84 - 8.87 = 890.53\text{m}^2$

梯廳 管道 安全梯 緊急 管道
升降機

圖 6-42 14~23F 面積計算圖(二) (S:1/300)

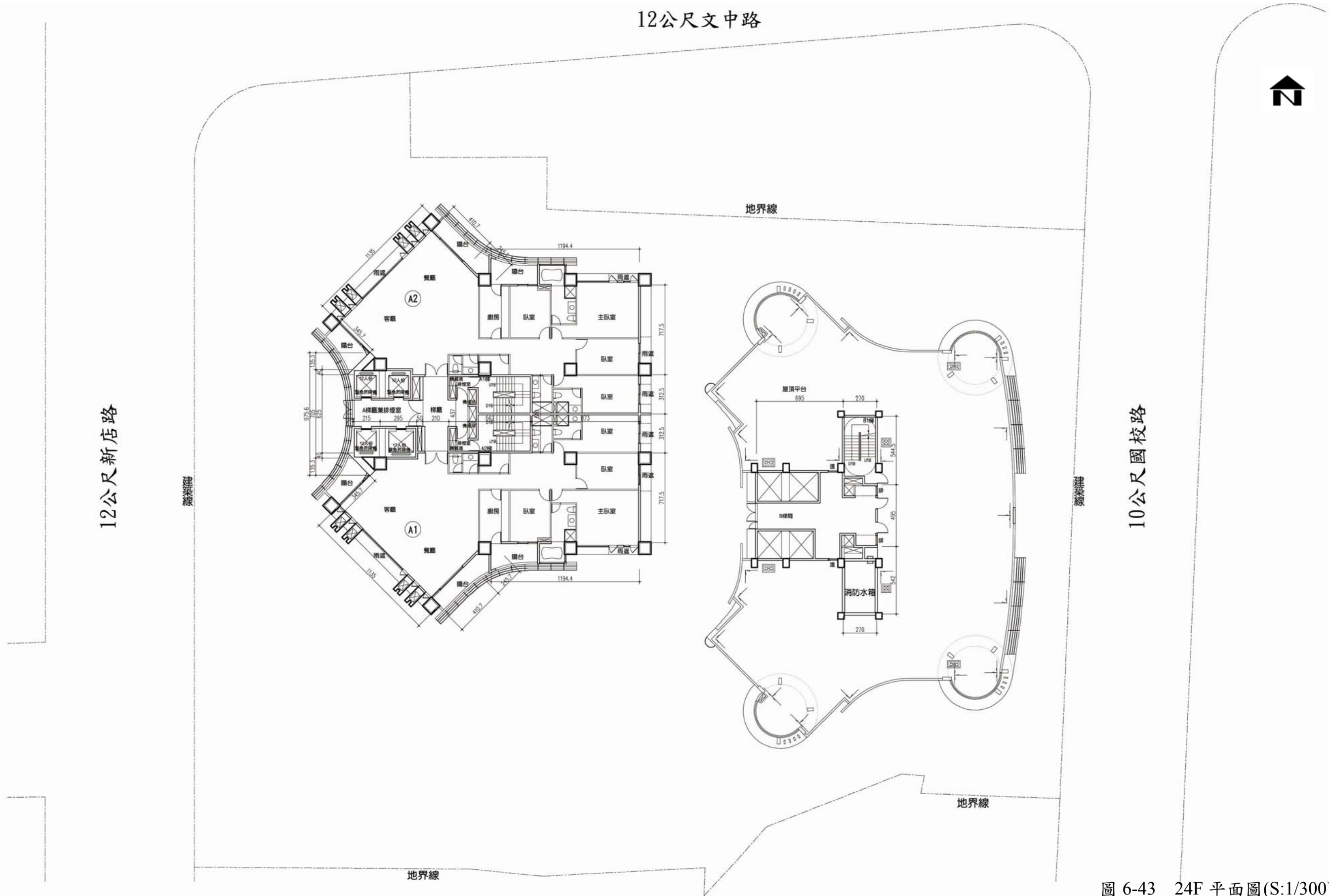


圖 6-43 24F 平面圖(S:1/300)

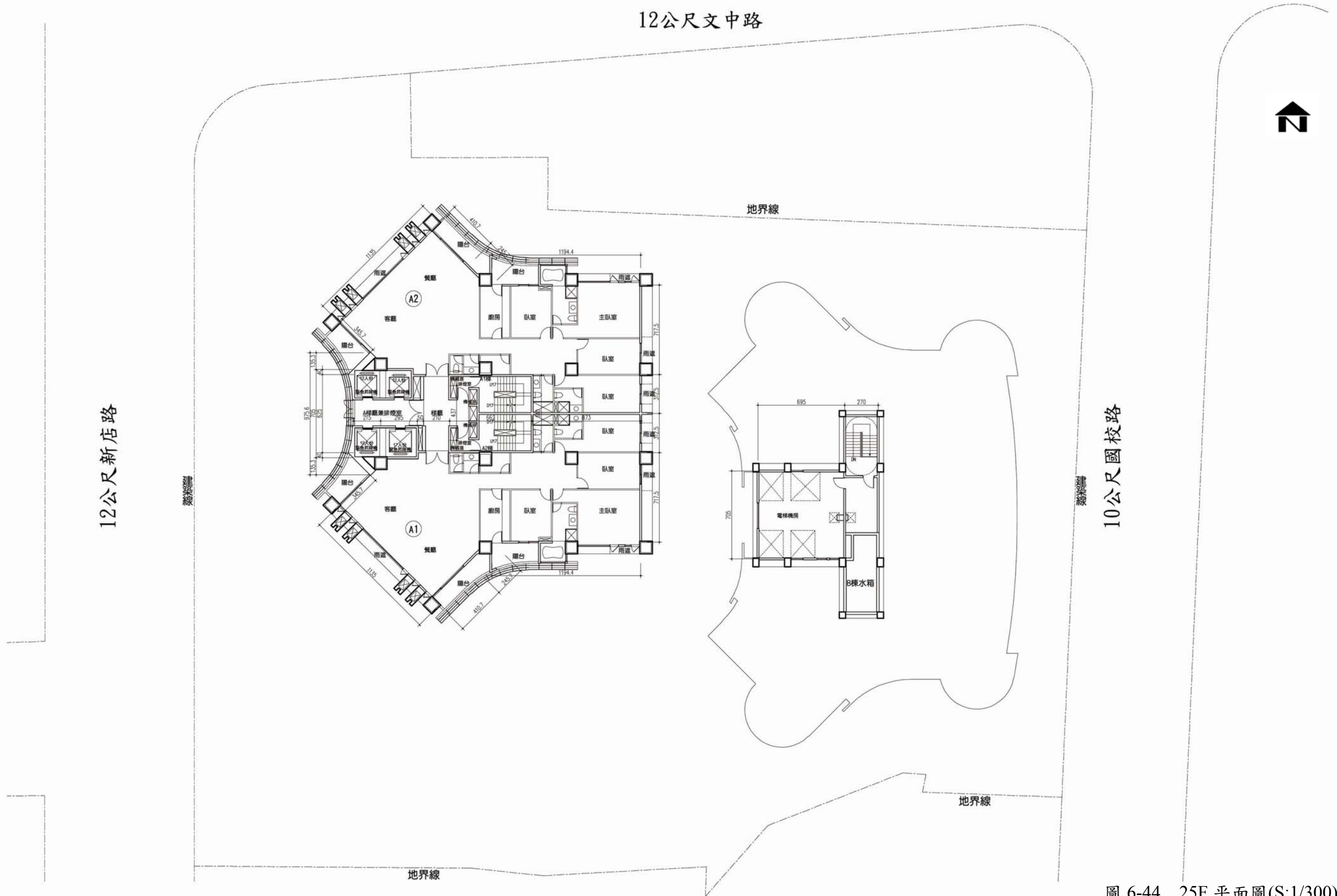


圖 6-44 25F 平面圖(S:1/300)

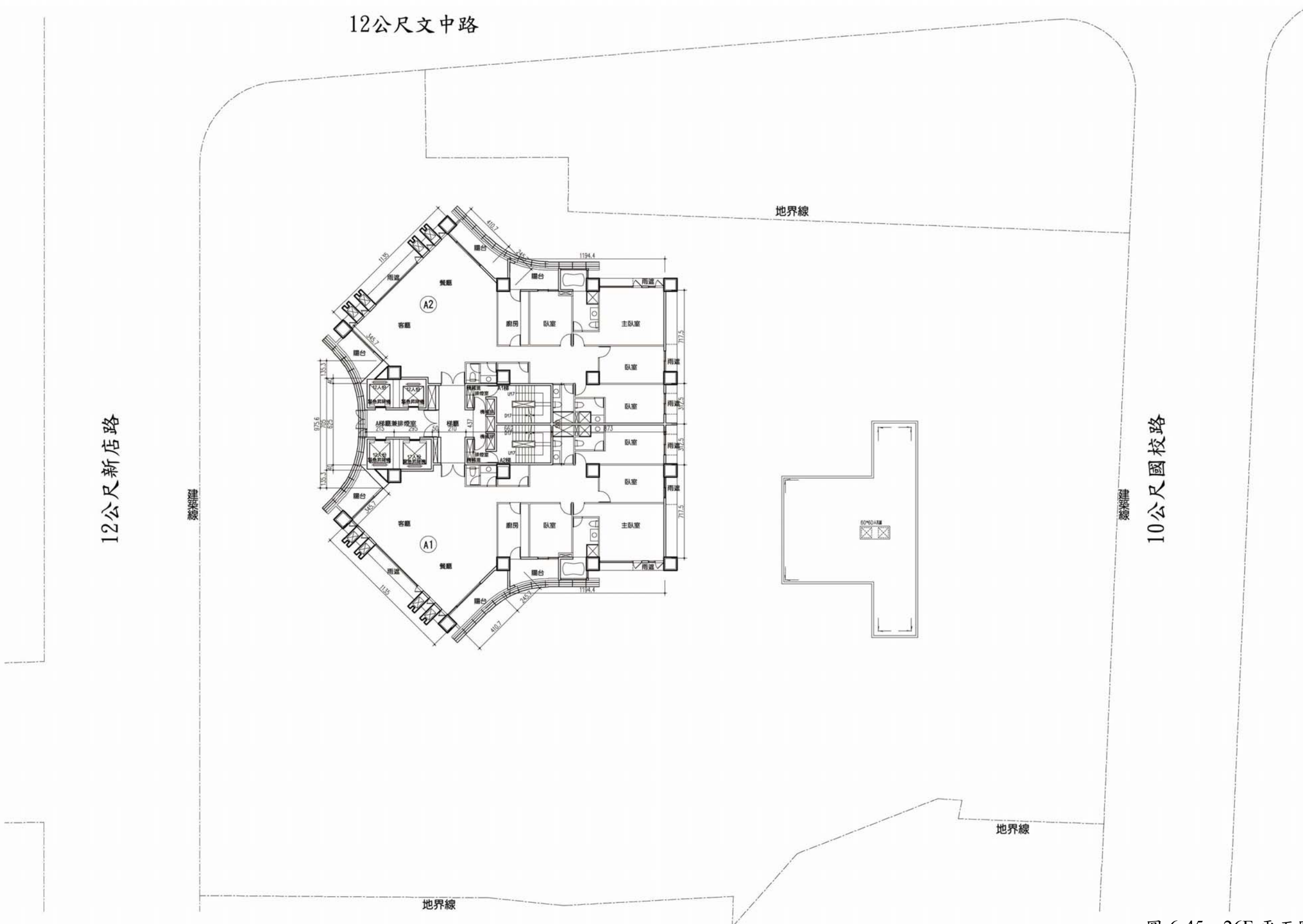
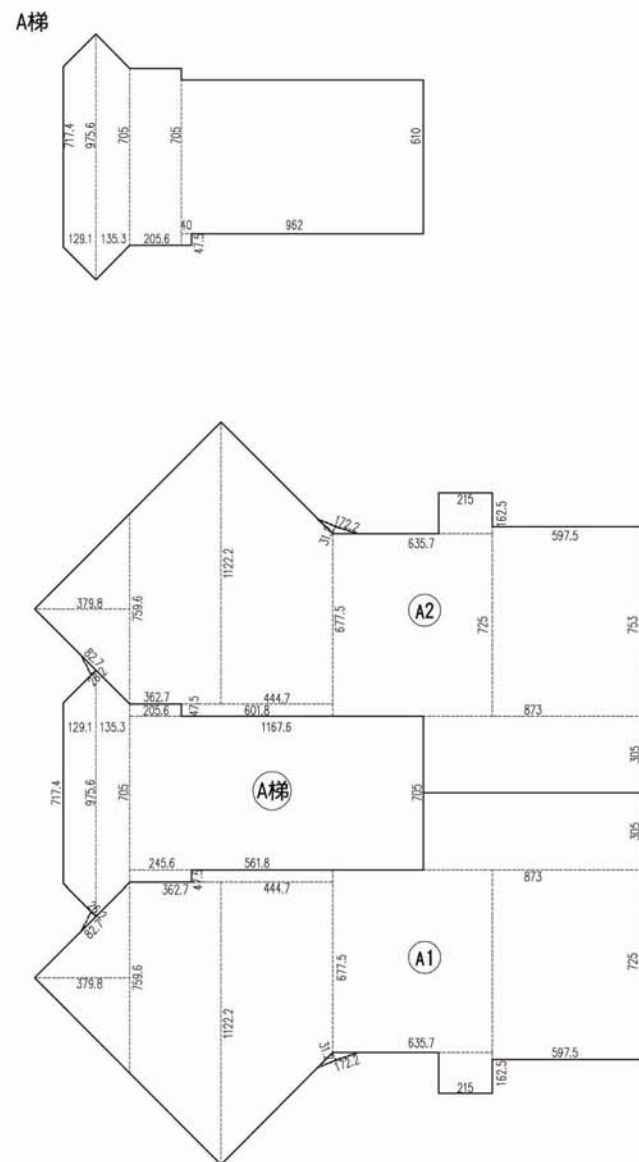


圖 6-45 26F 平面圖(S:1/300)



一、貳拾肆~貳拾陸層 樓地板面積
室內面積

A1 $3.798 \times 7.596 / 2 + (7.596 + 11.222) \times 3.627 / 2 + (11.222 + 6.775) \times 4.447 / 2$
 $+ 5.618 \times 0.475 + 2.15 \times 1.625 + 6.357 \times 7.25 + 5.975 \times 7.53$
 $+ 8.73 \times 3.05 = 212.44 \text{ m}^2$

陽台過二米
 $1.722 \times 0.312 / 2 + 0.827 \times 0.262 / 2 = 0.38 \text{ m}^2$

小計 $212.44 + 0.38 = 212.82 \text{ m}^2$

A2 $3.798 \times 7.596 / 2 + (7.596 + 11.222) \times 3.627 / 2 + (11.222 + 6.775) \times 4.447 / 2$
 $+ 6.018 \times 0.475 + 2.15 \times 1.625 + 6.357 \times 7.25 + 5.975 \times 7.53$
 $+ 8.73 \times 3.05 = 212.63 \text{ m}^2$

陽台過二米
 $1.722 \times 0.312 / 2 + 0.827 \times 0.262 / 2 = 0.38 \text{ m}^2$

小計 $212.63 + 0.38 = 213.01 \text{ m}^2$

合計 = 425.83 m²

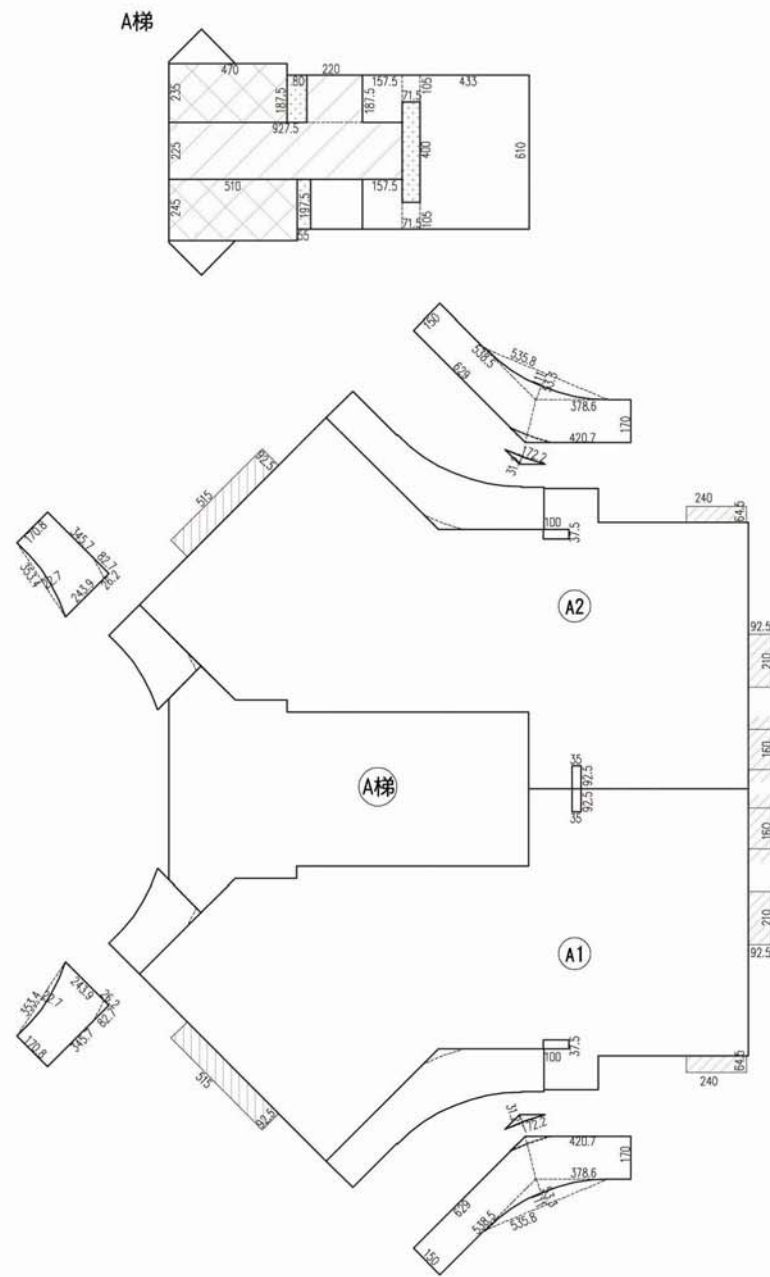
樓電梯間

A梯 $(7.174 + 9.756) \times 1.291 / 2 + (9.756 + 7.05) \times 1.353 / 2$
 $+ 2.056 \times 7.05 + 0.4 \times 0.475 + 9.62 \times 6.1 = 95.66 \text{ m}^2$

合計 = 95.66 m²

二、貳拾肆~貳拾陸層 樓地板面積
 $425.83 + 95.66 = 521.49 \text{ m}^2$

圖 6-46 24~26F 面積計算圖(一) (S:1/300)



三. 貳拾肆~貳拾陸層 陽台、雨遮、梯廳、升降機、安全梯、管道 面積計算

陽台

A1 $(2.439+1.708) \times 3.457/2 - 3.534 \times 0.227 \times 2/3 = 6.63\text{m}^2$

$(6.29+5.385) \times 1.5/2 + (4.207+3.786) \times 1.7/2$
 $+ 5.358 \times 1.11/2 - 5.358 \times 0.533 \times 2/3 = 16.62\text{m}^2$

陽台過二米
 $0.827 \times 0.262/2 + 1.722 \times 0.312/2 = 0.38\text{m}^2$

小計 $6.63+16.62-0.38=22.87\text{m}^2$

A2 $(2.439+1.708) \times 3.457/2 - 3.534 \times 0.227 \times 2/3 = 6.63\text{m}^2$

$(6.29+5.385) \times 1.5/2 + (4.207+3.786) \times 1.7/2$
 $+ 5.358 \times 1.11/2 - 5.358 \times 0.533 \times 2/3 = 16.62\text{m}^2$

陽台過二米
 $0.827 \times 0.262/2 + 1.722 \times 0.312/2 = 0.38\text{m}^2$

小計 $6.63+16.62-0.38=22.87\text{m}^2$

合計 45.74m^2

雨遮

A1 $(5.15+2.1+1.6) \times 0.925 + (2.4 \times 0.645) = 9.73\text{m}^2$

A2 $(5.15+2.1+1.6) \times 0.925 + (2.4 \times 0.645) = 9.73\text{m}^2$

合計 19.46m^2

梯廳

A梯: $2.2 \times 1.875 + 9.275 \times 2.25 = 24.99\text{m}^2$

合計 $= 24.99\text{m}^2$

緊急升降機

A梯: $4.7 \times 2.35 + 5.1 \times 2.45 = 23.54\text{m}^2$

合計 $= 23.54\text{m}^2$

管道

A梯: $0.8 \times 1.875 + 0.55 \times 1.975 + 0.715 \times 4 = 5.45\text{m}^2$

合計 $= 5.45\text{m}^2$

安全梯

A梯: $1.575 \times (1.875 + 1.975) + 0.715 \times 1.05 \times 2 + 4.33 \times 6.1 = 33.98\text{m}^2$

合計 $= 33.98\text{m}^2$

室內管道計入設備空間

A1 $1 \times 0.375 + 0.35 \times 0.925 = 0.7\text{m}^2$

A2 $1 \times 0.375 + 0.35 \times 0.925 = 0.7\text{m}^2$

合計 $= 1.4\text{m}^2$

四. 貳拾肆~貳拾陸層 陽台、梯廳面積檢討

陽台面積檢討

$45.74\text{m}^2 < 521.49 \times 10\% = 52.15\text{m}^2$

梯廳免計面積檢討

$24.99\text{m}^2 < 521.49 \times 10\% = 52.15\text{m}^2$

陽台+梯廳面積檢討

$45.74 + 24.99 = 70.73\text{m}^2 < 521.49 \times 15\% = 78.22\text{m}^2$

五. 拾肆~貳拾參層 容積樓地板面積

$521.49 - 24.99 - 1.4 - 33.98 - 23.54 - 5.45 = 432.13\text{m}^2$

梯廳 管道 安全梯 緊急 管道
 升降機

圖 6-47 24~26F 面積計算圖(二) (S:1/300)

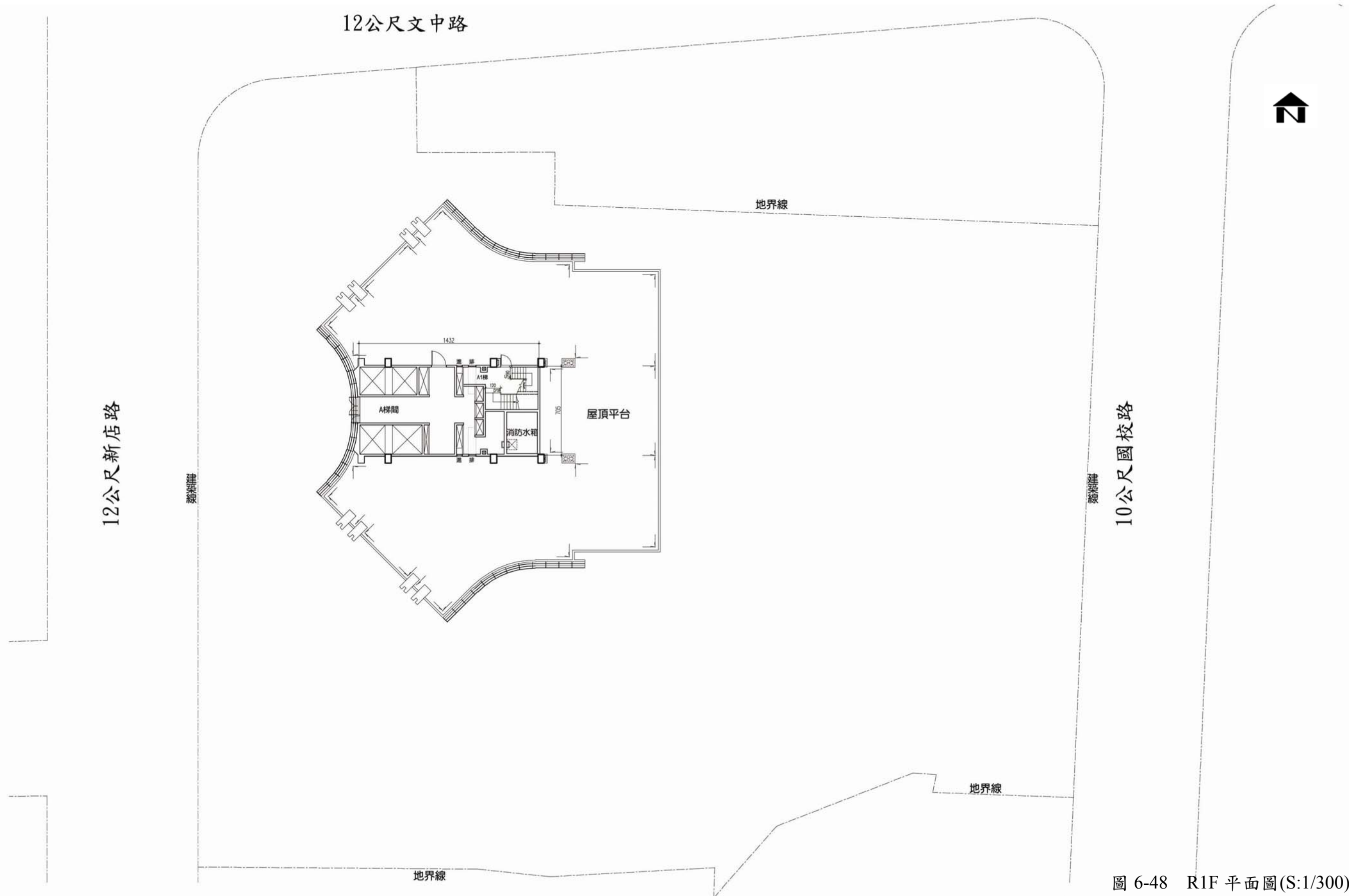


圖 6-48 R1F 平面圖(S:1/300)

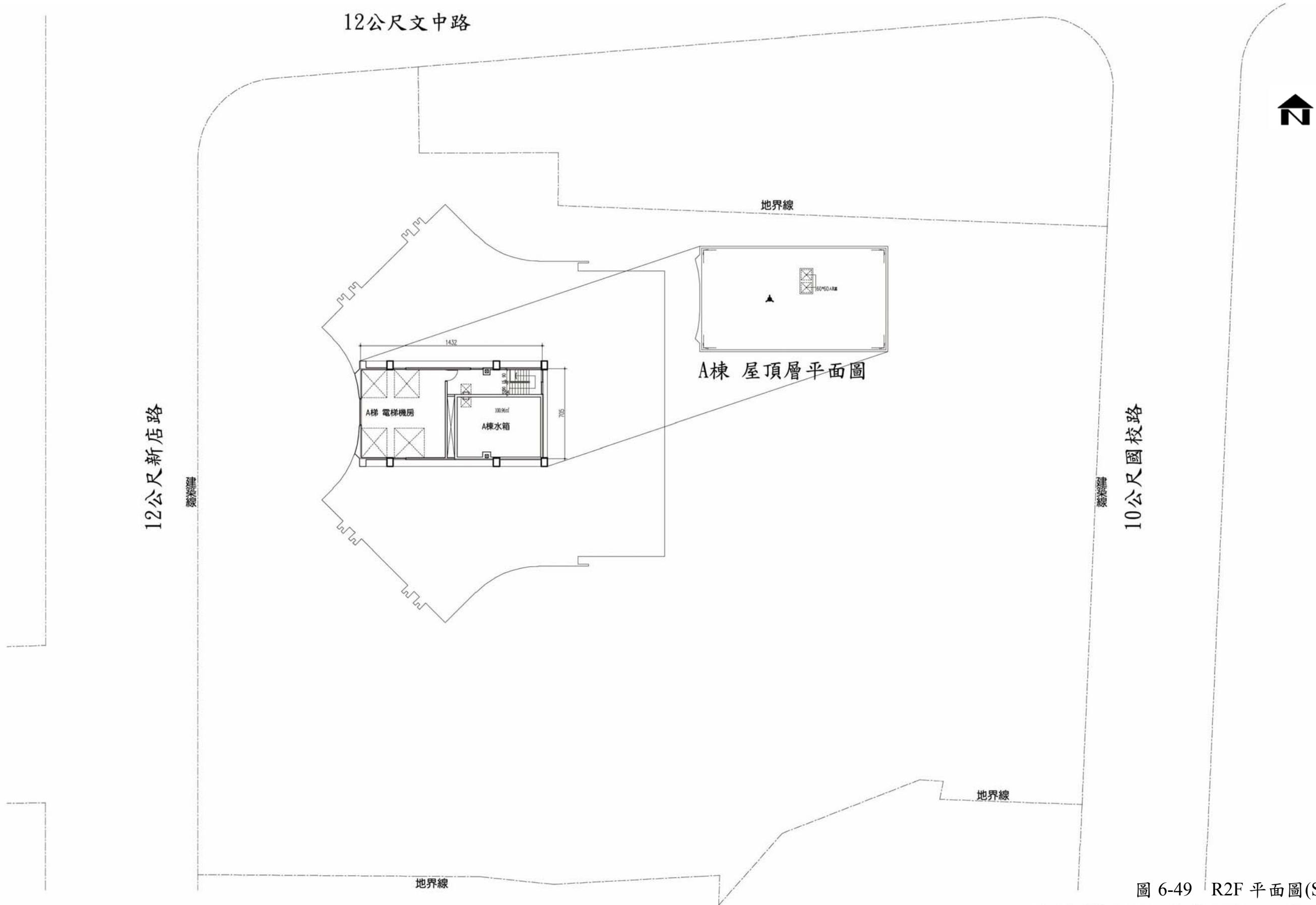
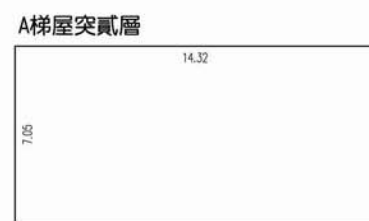


圖 6-49 R2F 平面圖(S:1/300)



一. 屋突壹層 樓地板面積
 A梯: $14.32 \times 7.05 = 100.96\text{m}^2$
 B梯: $2.675 \times 4.395 + 9.625 \times 7.05 + 2.65 \times 4.37 = 91.19\text{m}^2$
 小計: 192.15m^2

二. 屋突貳層 樓地板面積
 A梯: $14.32 \times 7.05 = 100.96\text{m}^2$
 B梯: $2.675 \times 4.395 + 9.625 \times 7.05 + 2.65 \times 4.37 = 91.19\text{m}^2$
 小計: 192.15m^2

三. 法規檢討
 $192.15\text{m}^2 < 2538.6 \times 15\% = 380.79\text{m}^2$ OK

圖 6-50 屋頂層面積計算圖(S:1/300)



圖 6-51 北向立面圖(S:1/500)

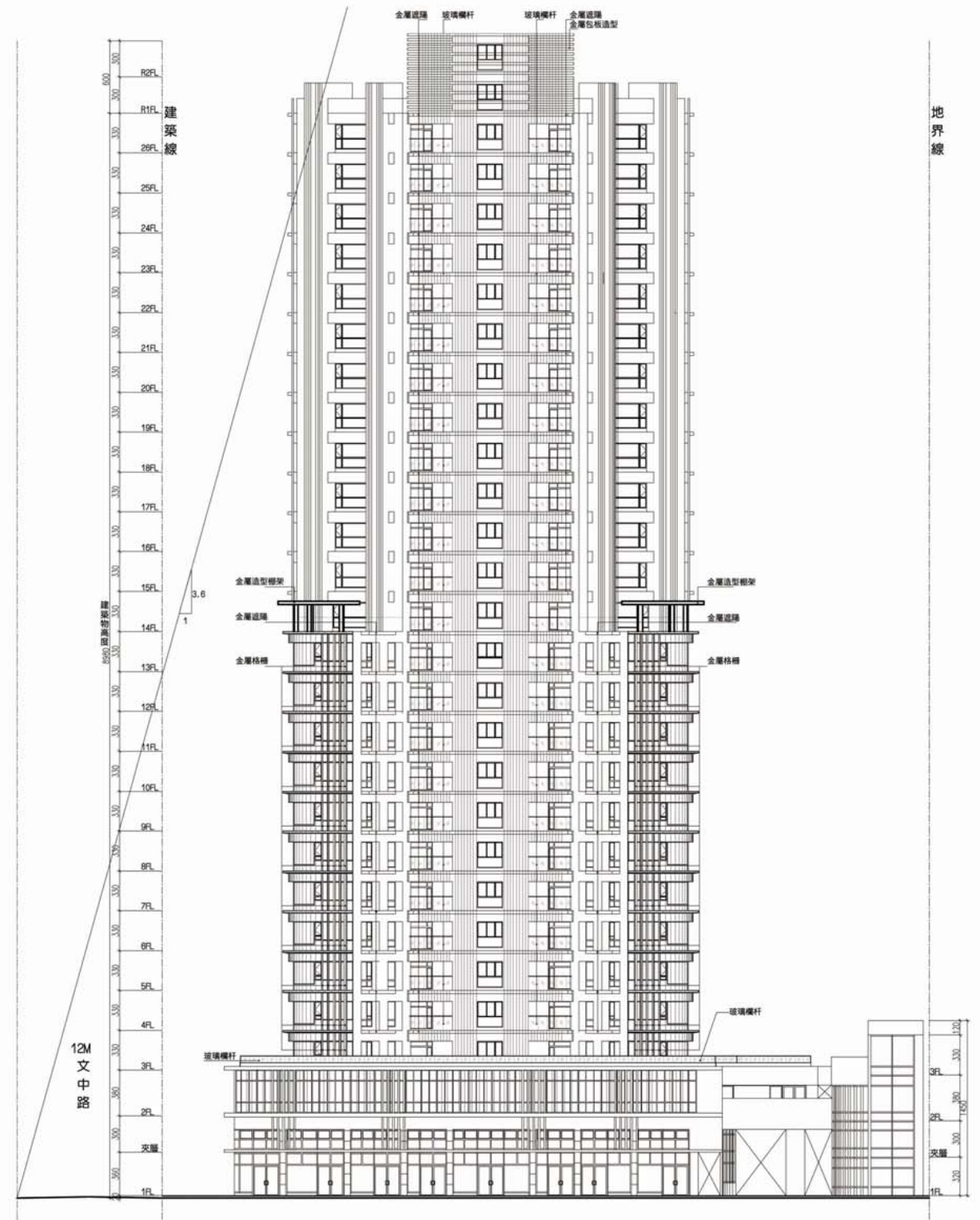


圖 6-52 西向立面圖(S:1/500)

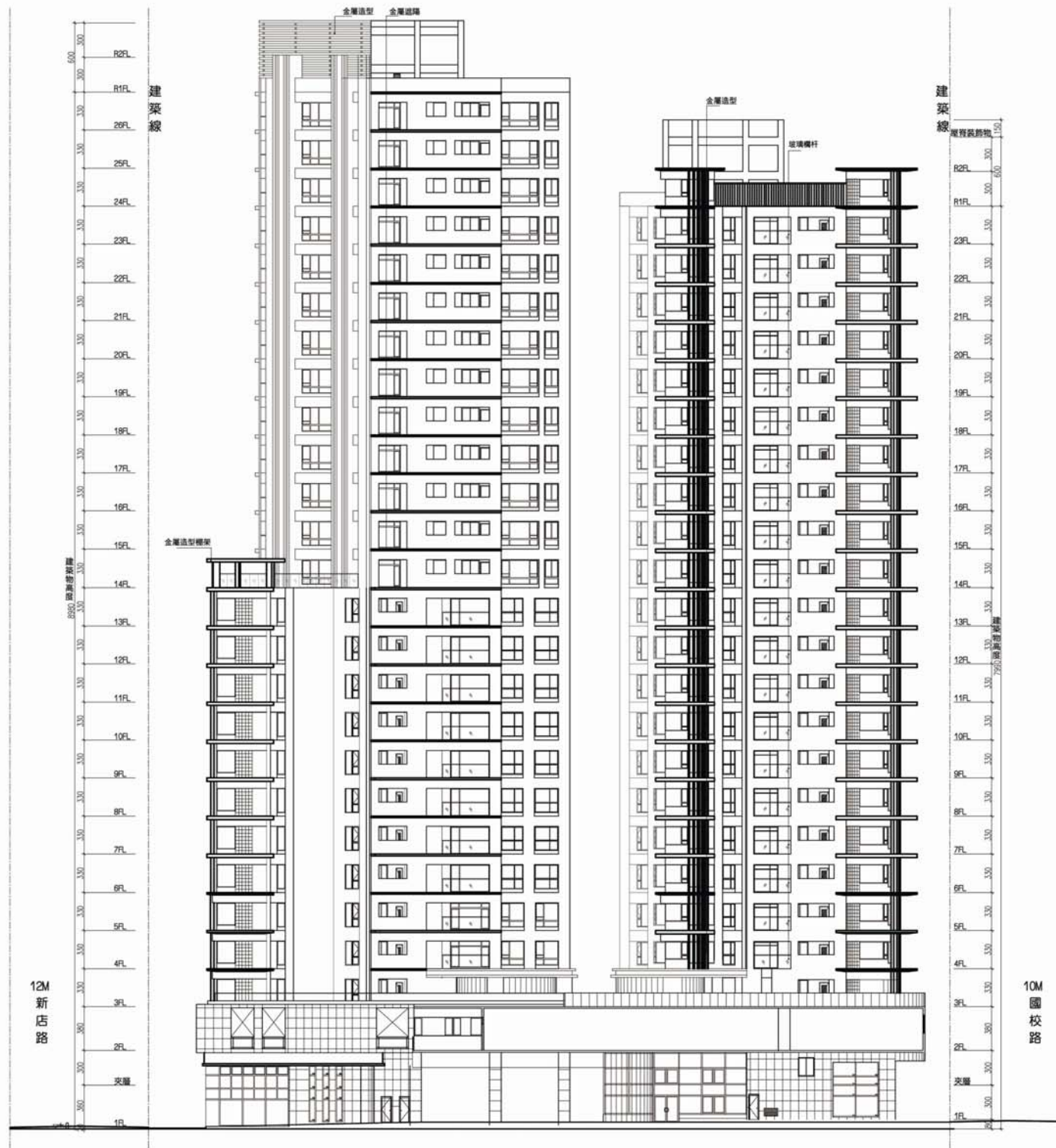


圖 6-53 南向立面圖(S:1/500)

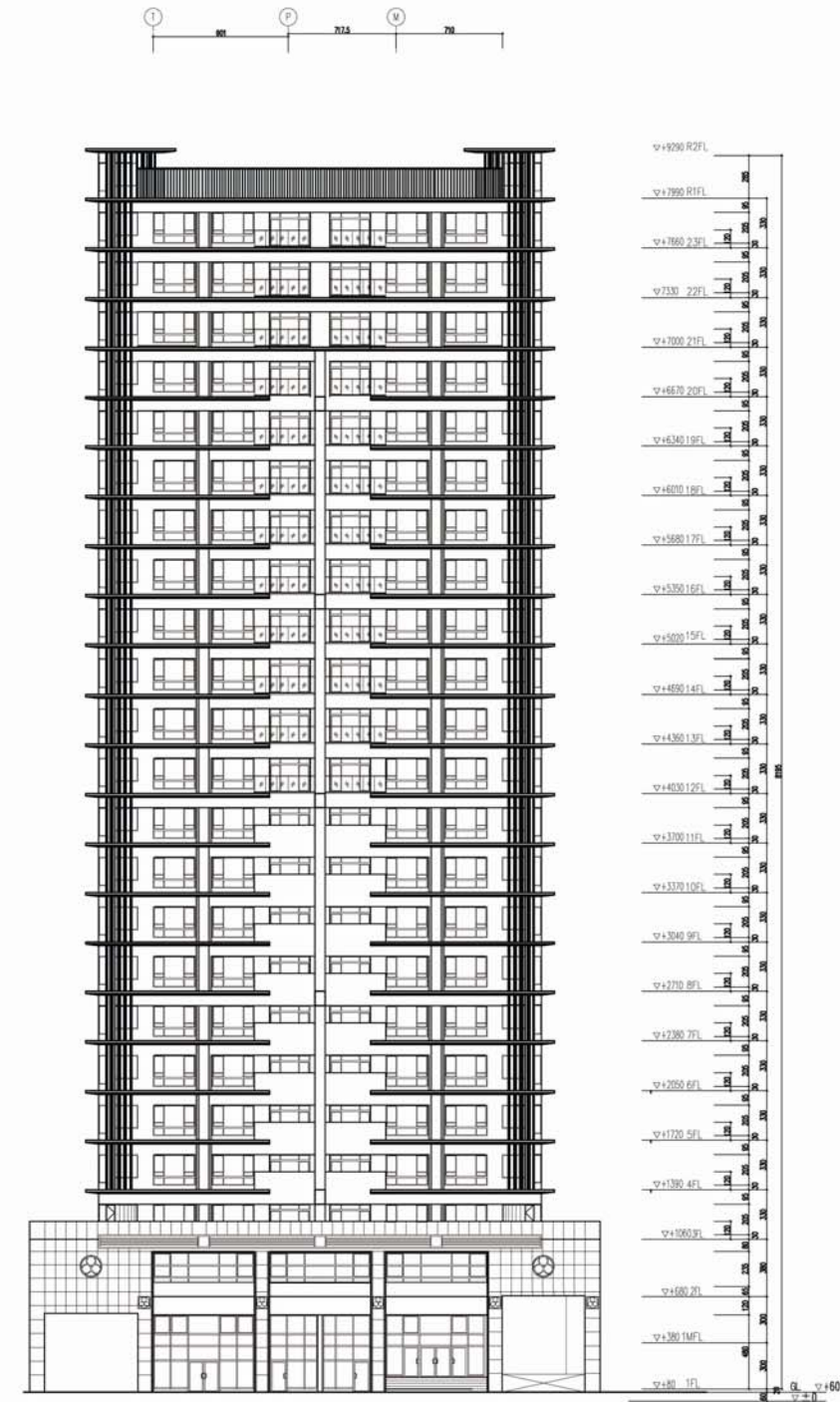


圖 6-54 東向立面圖(S:1/500)

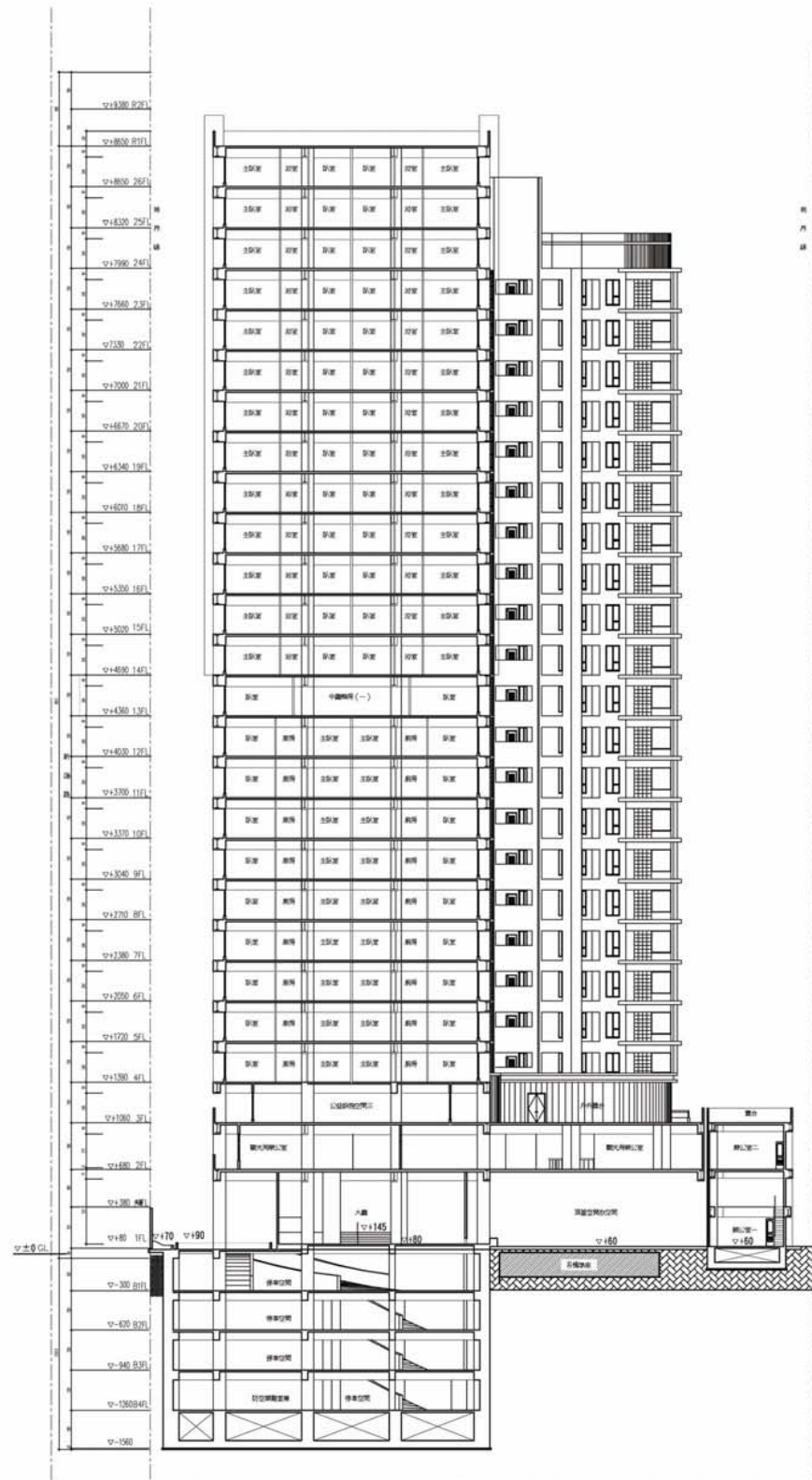


圖 6-55 縱向剖面圖(S:1/500)

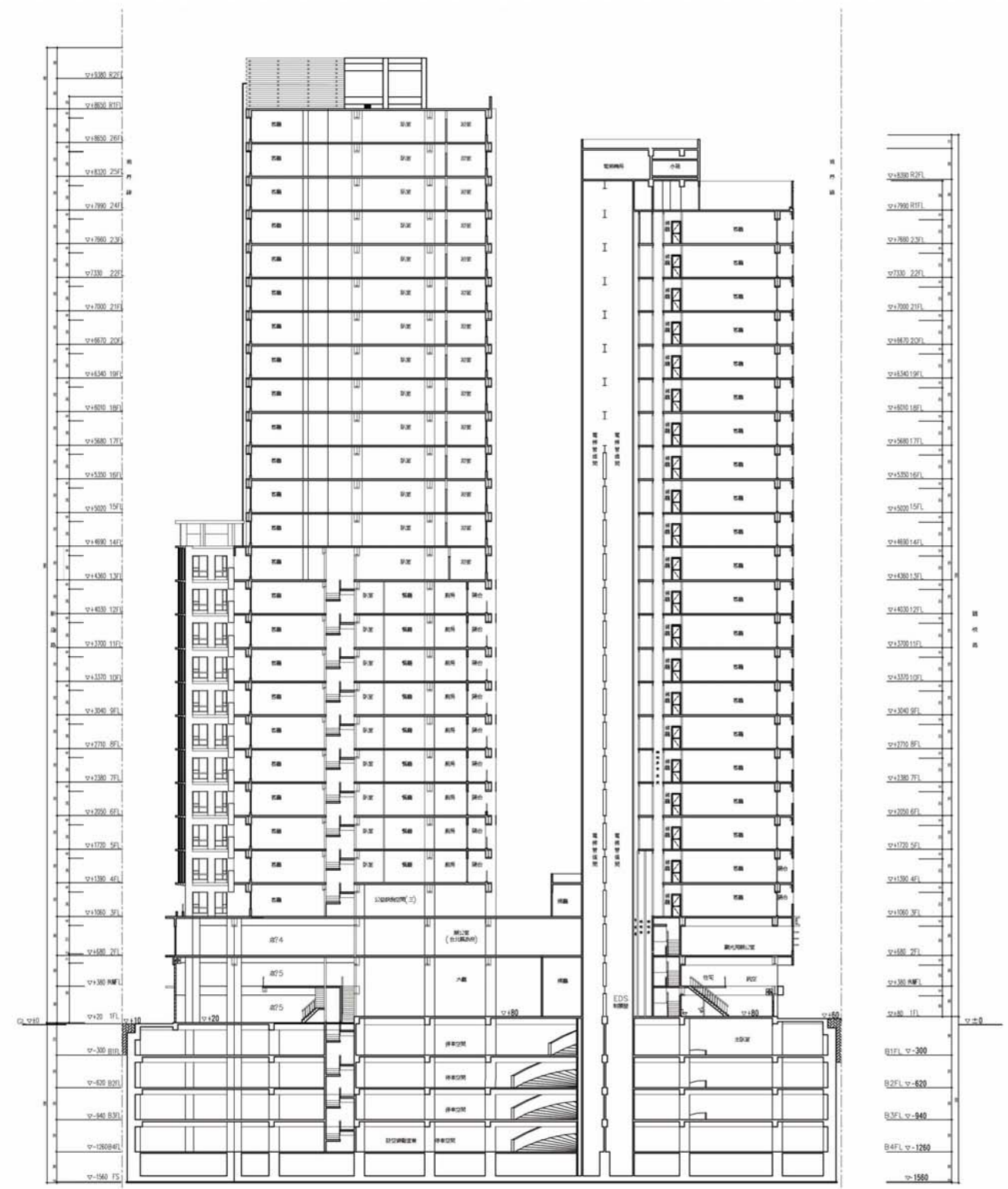


圖 6-56 橫向剖面圖(S:1/500)