

圖11-46 屋頂層面積計算圖(S=1/300)

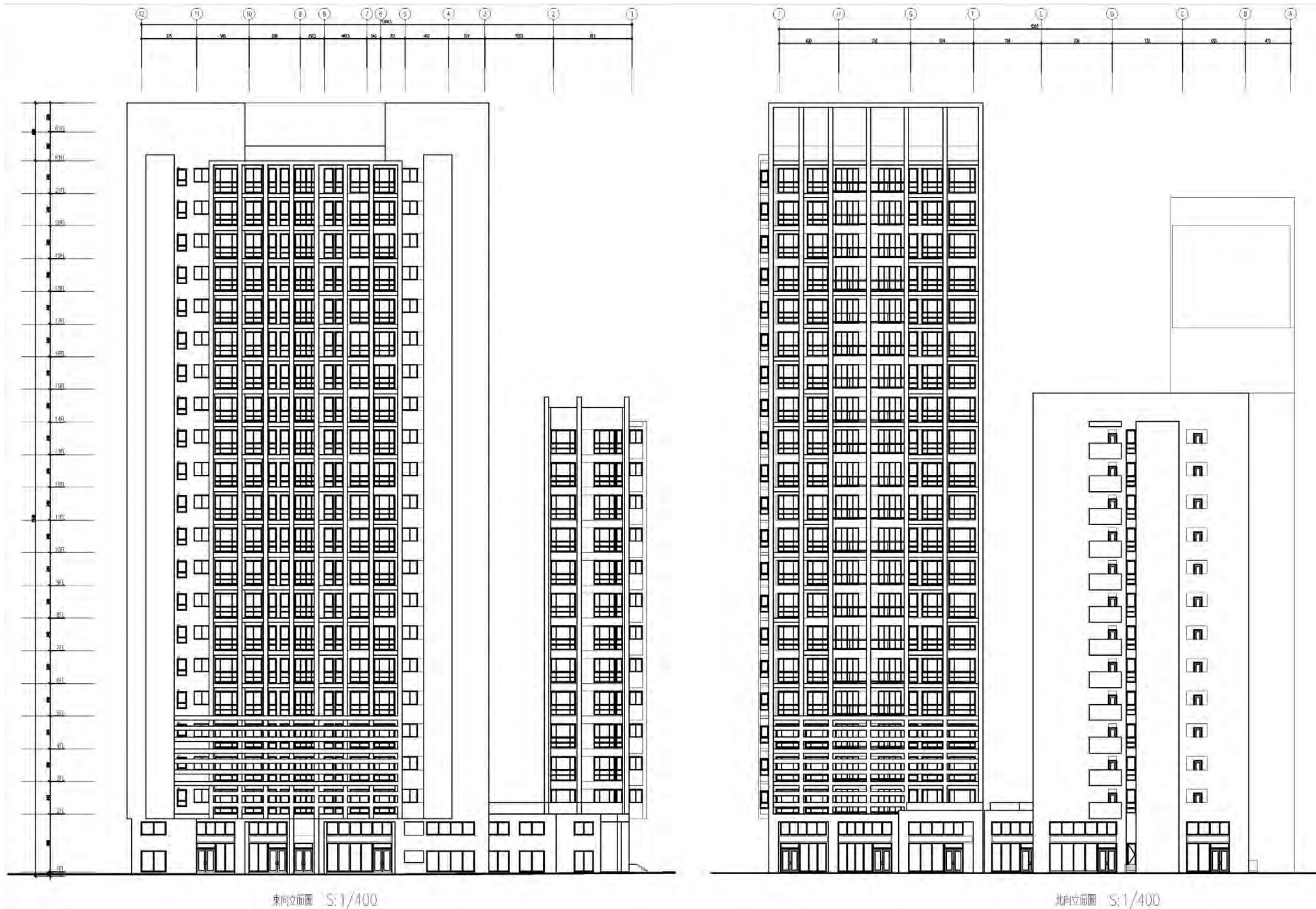
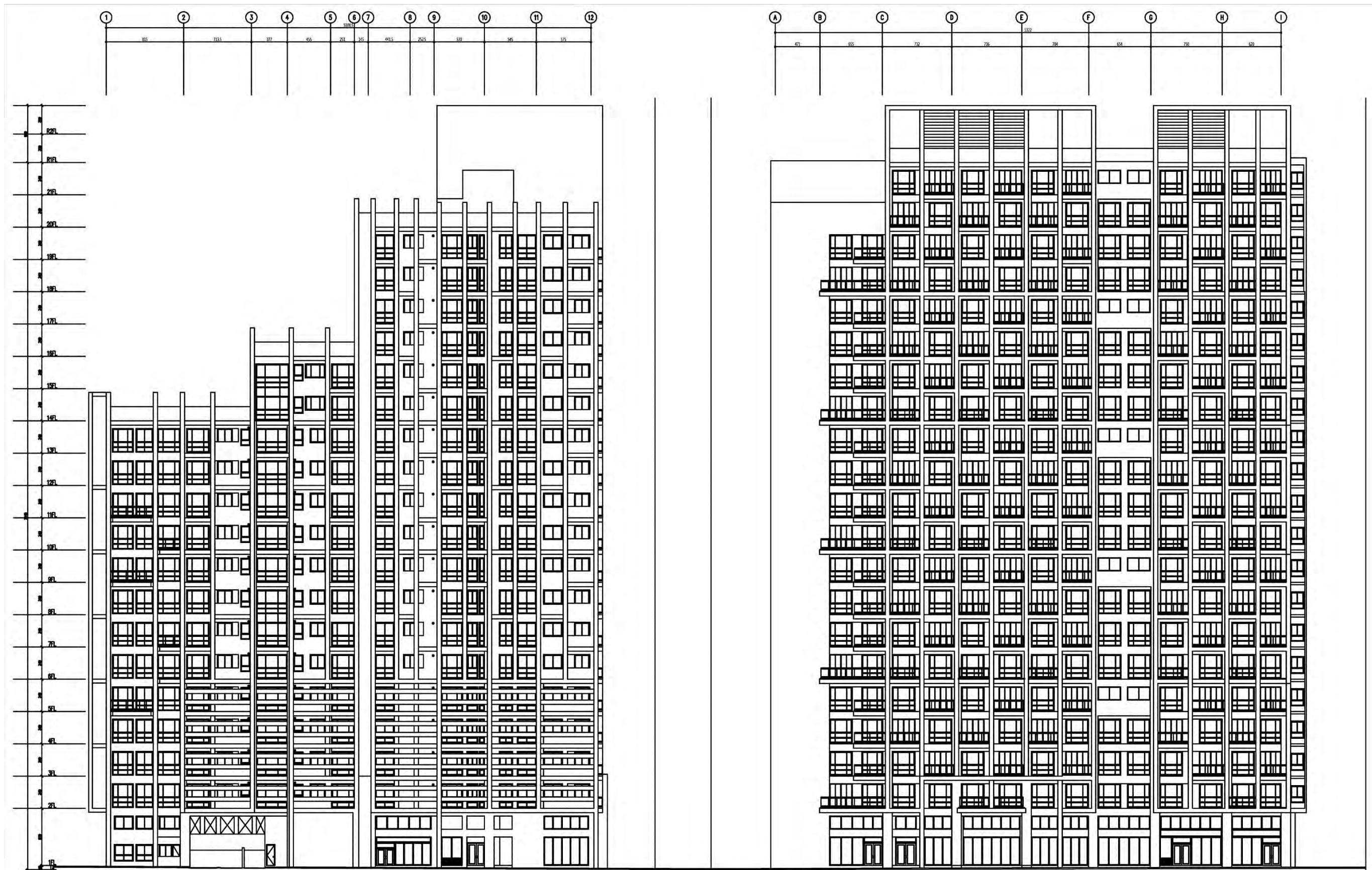


圖11-47 東向、北向立面圖(S=1/400)



西向立面圖 S:1/400

南向立面圖 S:1/400

圖11-48 西向、南向立面圖(S=1/400)



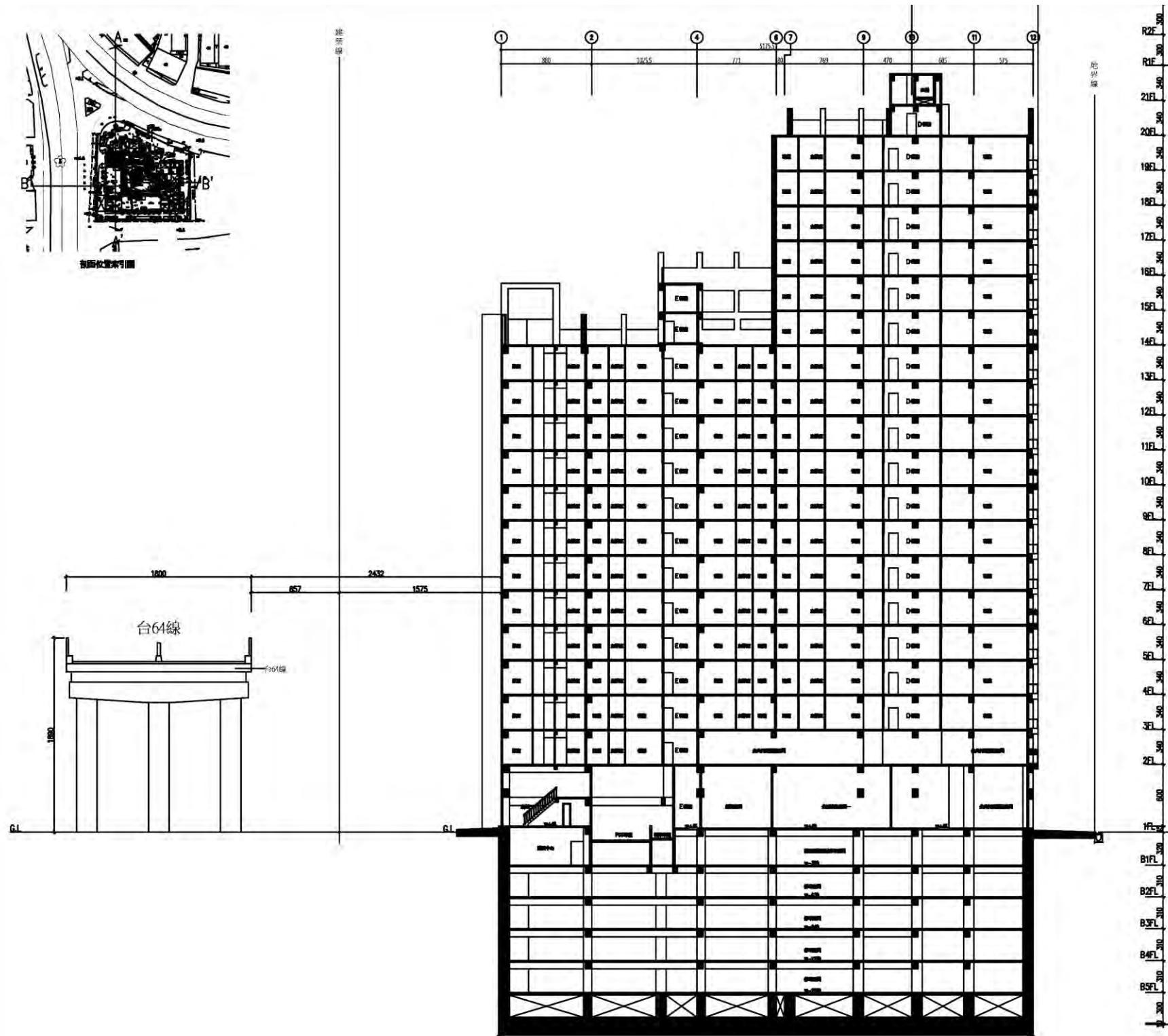


圖11-49 縱向剖面圖(S=1/500)

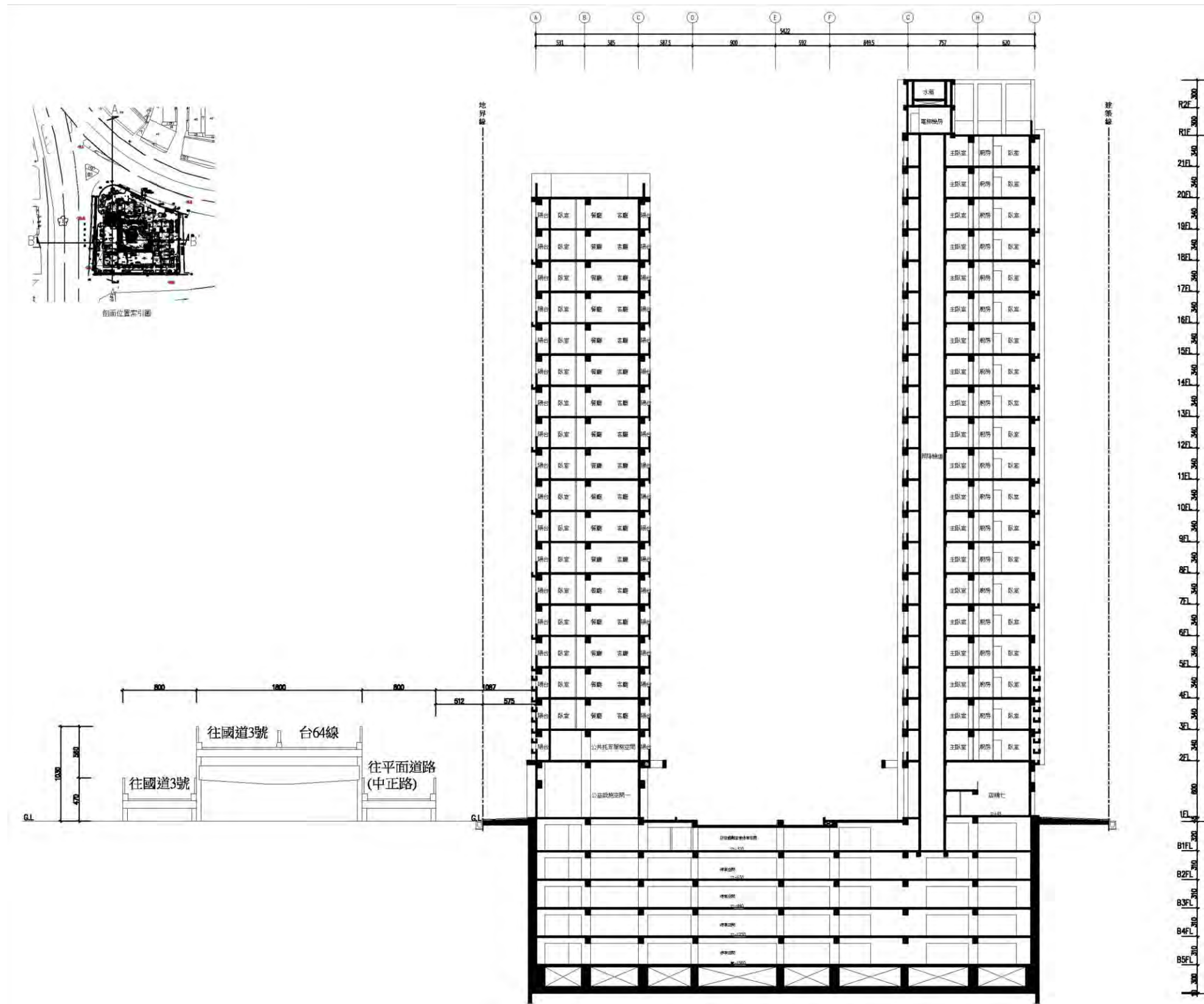


圖11-50 橫向剖面圖(S=1/500)