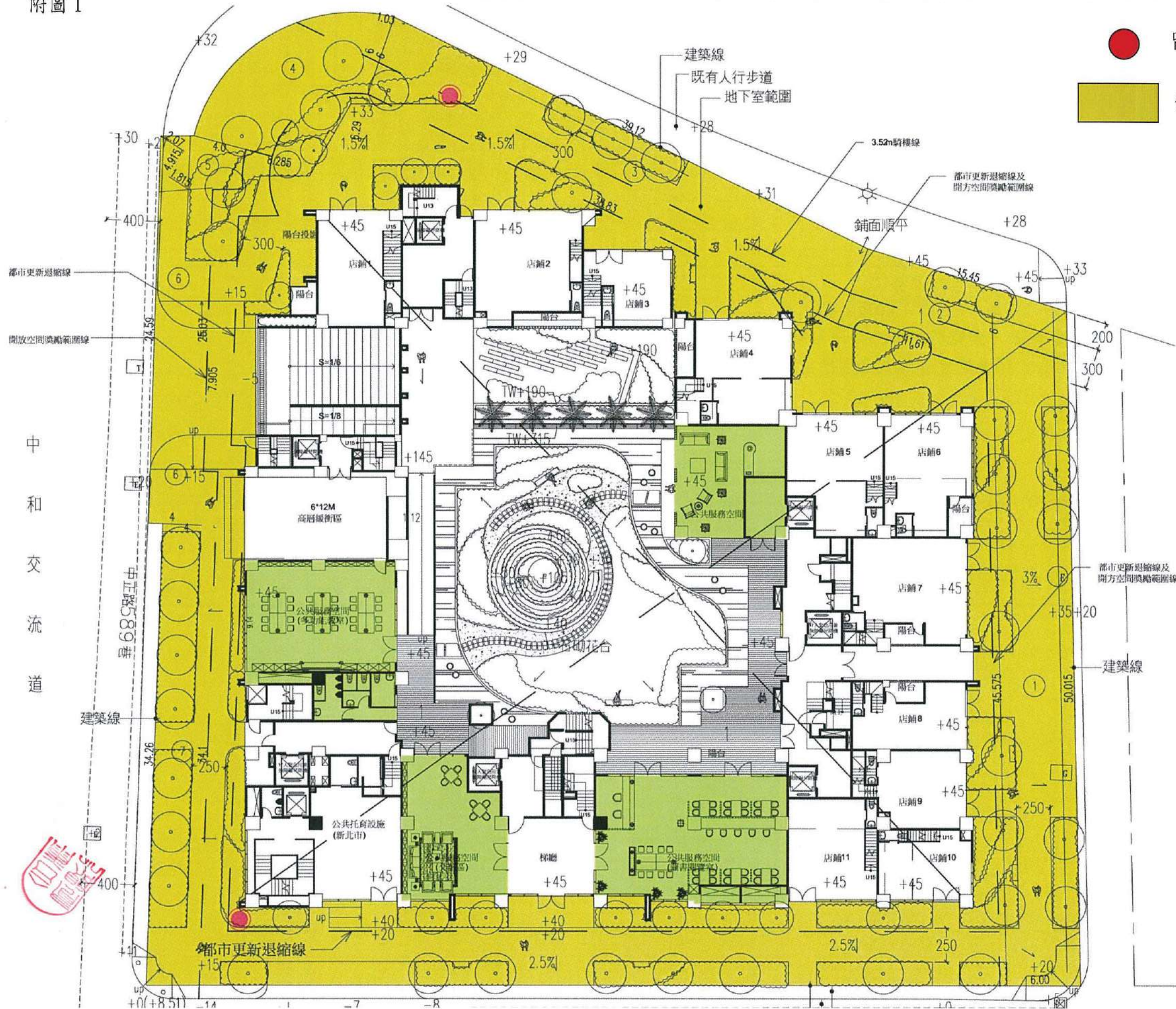


附圖 1



● 留供公眾使用空間告示牌位置
 ■ 供人行使用範圍

供人行使用範圍計算：

(A)
 $12.29 \times 12.29 \times 3.14159 \times (89.1 / 360) - 8.76 \times 17.24 / 2$
 $+ 32.82 \times 8.77 / 2 + (32.82 + 35.35) \times 0.02 / 2$
 $+ (35.35 + 52.77) \times 8.36 / 2$
 $+ (52.77 + 67.67) \times 4.62 / 2$
 $+ (67.67 + 68.57) \times 15.73 / 2$
 $+ (68.57 + 67.52) \times 0.04 / 2$
 $+ (67.52 + 69.68) \times 34.23 / 2$
 $= 4255.51 \text{ m}^2$

(B)
 $11.65 \times 0.45 + 0.05 \times 10.72 + 1.85 \times 4.47$
 $+ 1.75 \times 19.88 + 20.73 \times 0.7 + 0.45 \times 27.42 + 2 \times 26.5$
 $+ (28.42 + 28.42) \times 1.87 / 2 + 0.25 \times 32.11$
 $+ 27.19 \times 0.3 + (29.57 + 29.57) \times 0.22 / 2 + 0.05 \times 9$
 $+ 9.5 \times 0.45 + 39.85 \times 6.8 + 0.2 \times 40.15 + 4 \times 53.37$
 $+ 54.22 \times 0.2 + 54.69 \times 0.45 + 4.65 \times 54.22$
 $+ 3.51 \times 53.77 + 54.24 \times 0.45 + 0.47 \times 1 + 3.42 \times 53.77$
 $+ 54.22 \times 0.55 + 0.45 \times 54.69 + 2.08 \times 54.22$
 $+ 54.69 \times 0.06 + 0.39 \times 55.16 + 0.06 \times 54.59$
 $+ 2.69 \times 53.67 + 53.77 \times 1.95 + 0.47 \times 1 + 54.22 \times 1$
 $+ 4.05 \times 53.72 + 0.4 \times 15.65 + 6.18 \times 0.45 + 0.45 \times 1$
 $+ 0.47 \times 1 + 1.43 \times 0.45 + 5.9 \times 54.22 + 0.84 \times 1$
 $+ 0.01 \times 8.36 + 0.84 \times 1 + 1.43 \times 0.45 + 0.2 \times 1$
 $+ 0.25 \times 7.5 + 0.2 \times 1 + 0.4 \times 24.48 + 0.45 \times 1 + 0.45 \times 1$
 $= 2449.45 \text{ m}^2$

(A)-(B)
 $4255.51 \text{ m}^2 - 2449.45 \text{ m}^2 = 1806.06$

開放空間位置圖(S=1/300)

● 公共開放空間告示牌位置

公共服務空間面積

公共服務空間一(圖書閱覽區)	$6.92 \times 9.525 + 3.335 \times 9.275 + 4.105 \times 8.875$	= 133.28 m^2
公共服務空間二(交通區)	$3.645 \times 6.15 + 1.9 \times 7.42 + 5.75 \times 4.225 + 2.7 \times 4.97$	= 74.22 m^2
公共服務空間三(多功能教室)	$6.2 \times 2.75 + 9.14 \times 11.16$	= 119.05 m^2
公共服務空間四(休憩區)	$3.22 \times 3.285 + 6.27 \times 3.85$	= 34.71 m^2
小計	$133.28 + 74.22 + 119.05 + 32.59$	= 361.26 m^2

沿街式開放空間

①	$(45.575 + 50.015) \times 6.0 / 2$	= 286.77 m^2
②	$(15.45 + 11.61) \times 6 / 2$	= 81.18 m^2
③	$(39.12 + 38.83) \times 6 / 2$	= 233.85 m^2
④	$((6 + 6.29) \times (6 + 6.29) \times 3.14 \times 84 / 360) - (6.29 \times 6.29 \times 3.14 \times 84 / 360) + 6.0 \times 1.03 / 2$	= 84.77 m^2
⑤	$((4 + 8.285) \times (4 + 8.285) \times 3.14 \times 19 / 360) - (8.285 \times 8.285 \times 3.14 \times 19 / 360) + 4.195 \times 2.07 / 2 + 4.195 \times 1.815 / 2$	= 21.78 m^2
⑥	$(24.59 + 25.03) \times 4 / 2 - 4 \times 7.905$	= 67.62 m^2
⑦	$(34.1 + 34.26) \times 4 / 2$	= 136.72 m^2
小計		= 896.75 m^2

開放空間有效面積計算(S):

$896.75 \times 1.5 = 1345.125 m^2$ 道

鼓勵係數(I):

$2 / 5 \times 300\% = 1.2$

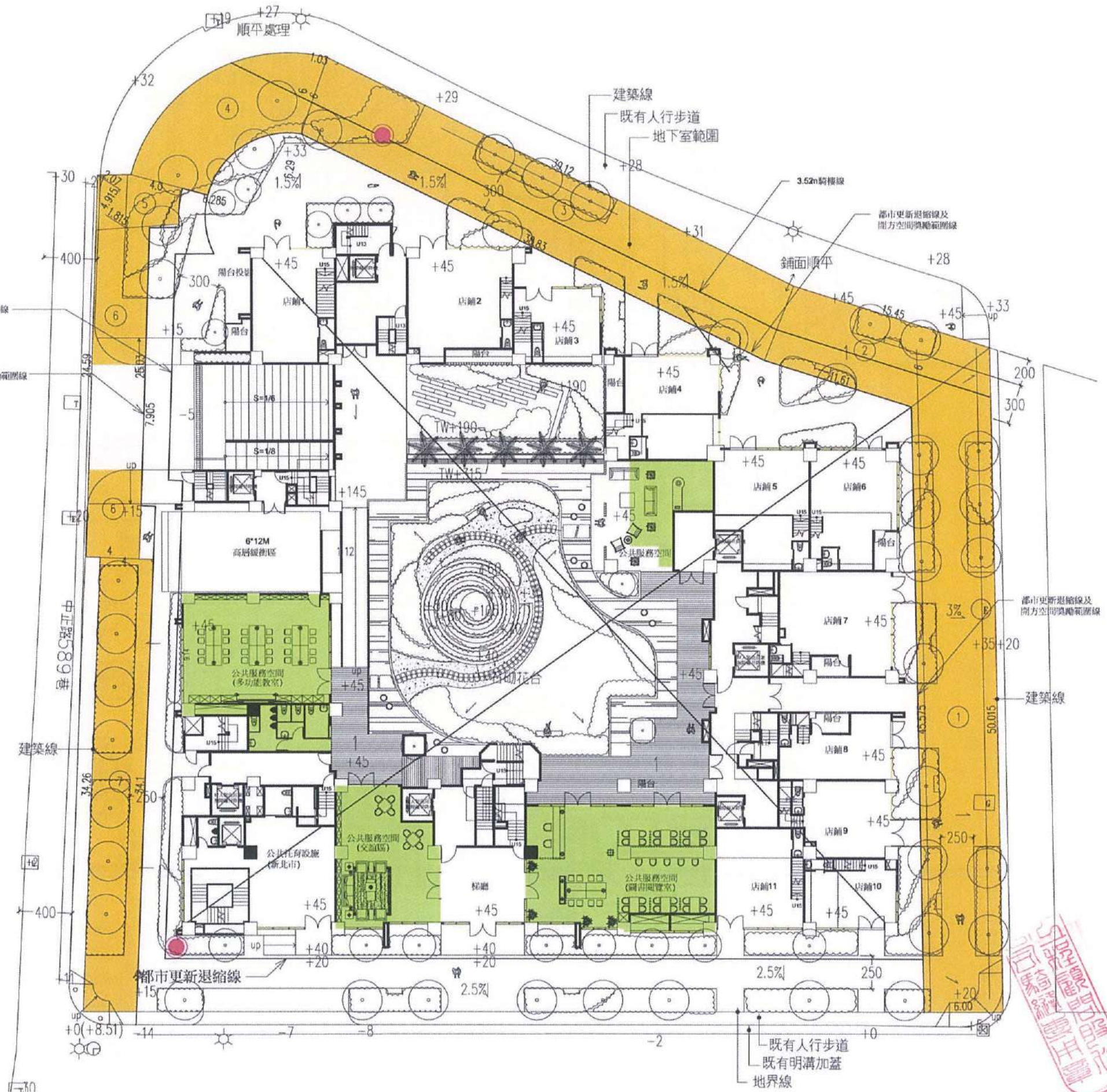
$\Delta F1 = 1345.125 \times 1.2 = 1614.15 m^2$

$\Delta F2 = 361.26 m^2$

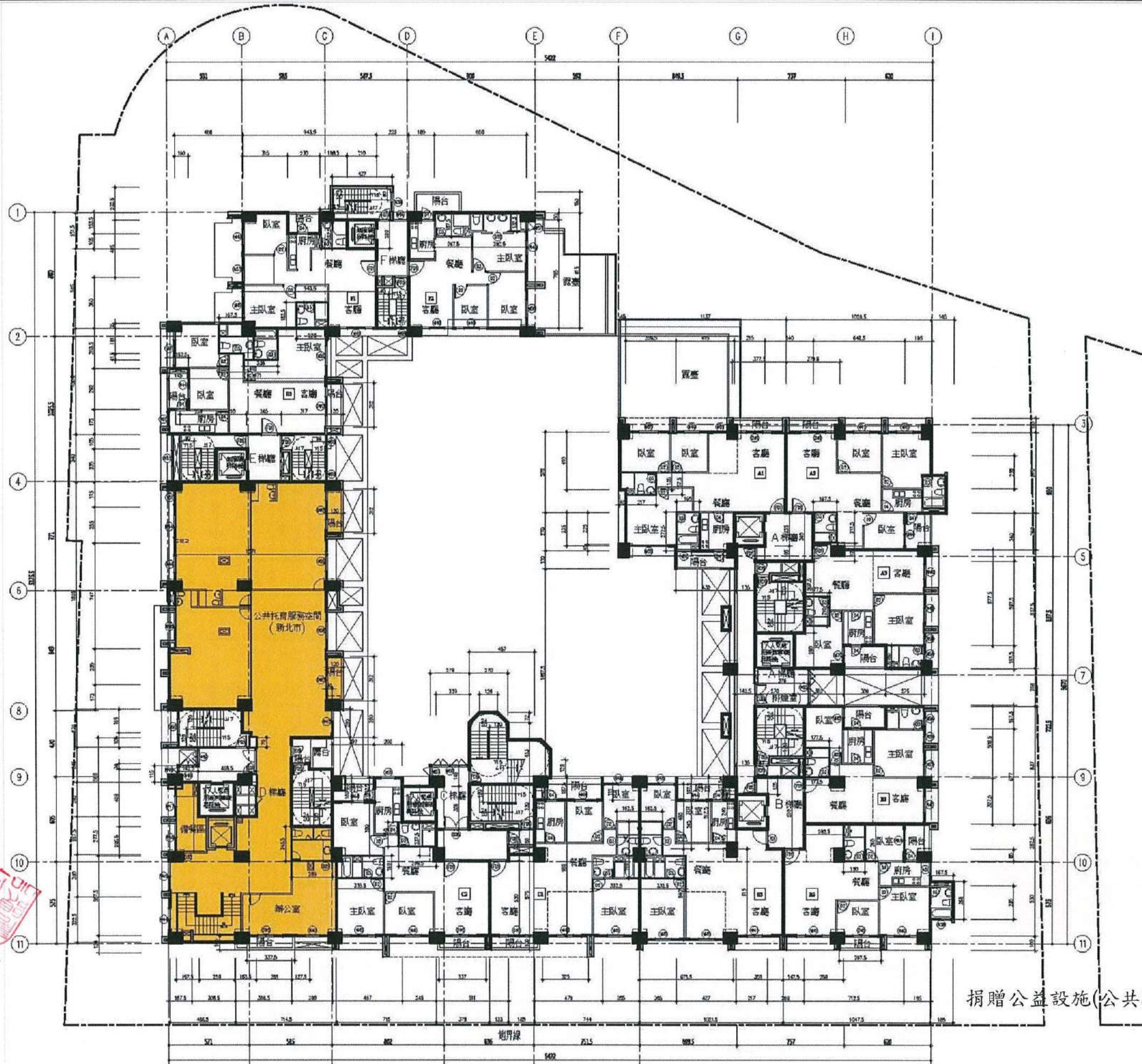
$\Delta F1 + \Delta F2 = 1614.15 + 361.26 = 1975.41 m^2$

本案法定基準容積 12768.03 m^2

$1975.41 / 12768.03 \times 100\% = 15.47\% < 30.00\%$



合康工程顧問股份有限公司



捐贈公益設施(公共托育設施)二層平面圖 (S=1/300)